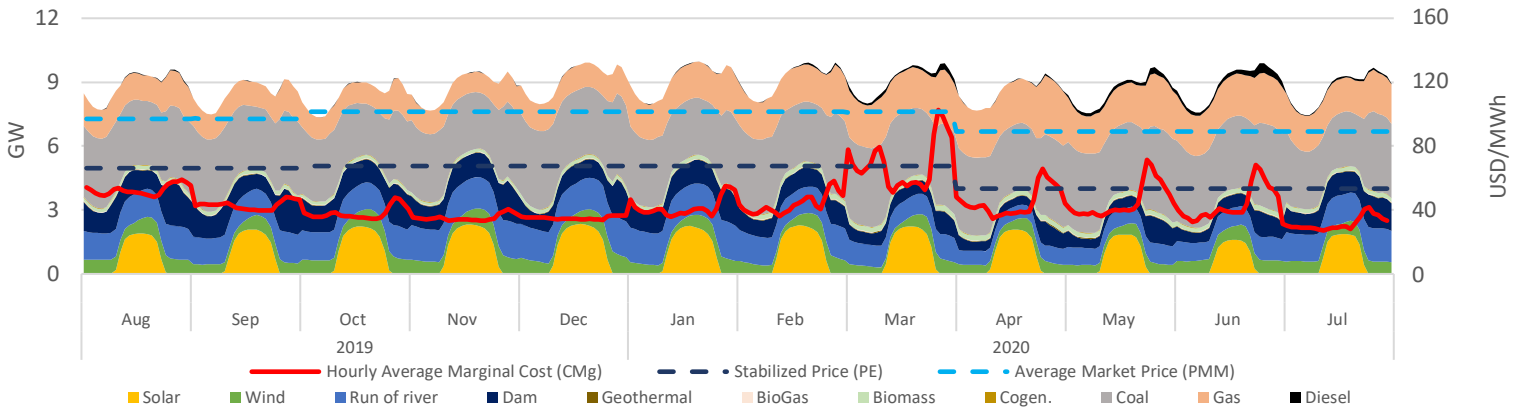


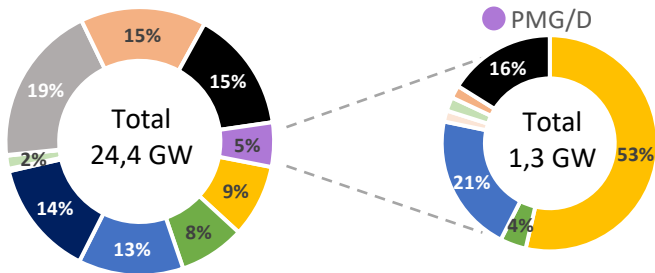
Executive Summary & Highlights

During July, SEN's installed capacity was 24.446 MW, producing a total of 6,45 TWh, where NCRE technologies represented an 19% of the produced energy (1,23 TWh). It is expected that an additional 8.263 MW come into operation between August 2020 and March 2024, of which 94% are NCRE plants (see "Summary Table - Projects Status"). Regarding the PMG/D segment, which represents 5% (1,3 GW) of SEN's installed capacity, and 3% (0,2 TWh) of the injected energy in the system, where hydro stands out with 51% of the generation (102 GWh), followed by solar with 37% (73 GWh) and wind representing 6% (13 GWh). Finally, the stabilized price mechanism cost above marginal price meant a systemic cost of MMUSD 2,8; cost that was distributed among Solar, Hydraulic and Wind generation plants as 1,73, 0,9 and 0,19 MMUSD respectively.

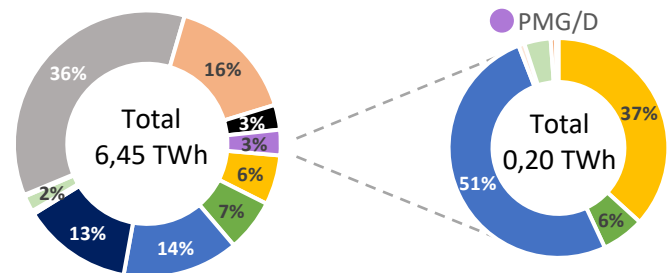
SEN Daily Hourly Average Technology Mix Production, and Alto Jahuel's Prices



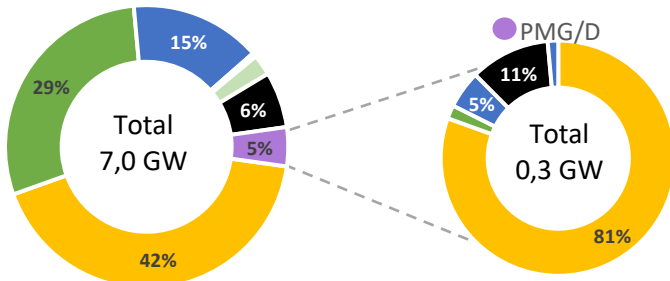
SEN's Installed Capacity [2] [8]



SEN's Generation [3]



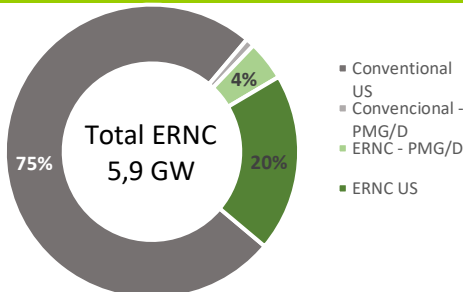
Projects Under Construction [4]



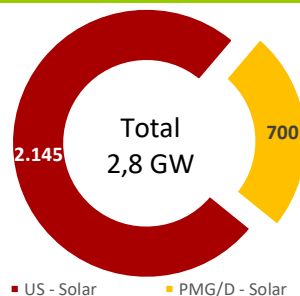
Summary Table – Project Status

Technology MW	Commissioning Stage [2]	Under Construction	Environmental Approved [5]	Environmental Undergoing [6]
Solar	188	3.209	663	59
Wind	144	2.033	17	164
Run of river	1	1.063	0	0
Geotérmica	0	33	0	0
Biomass	3	166	0	0
BioGas	3	5	0	0
Gas	26	0	0	0
Diesel	6	481	0	0
Total	372	6.989	680	223

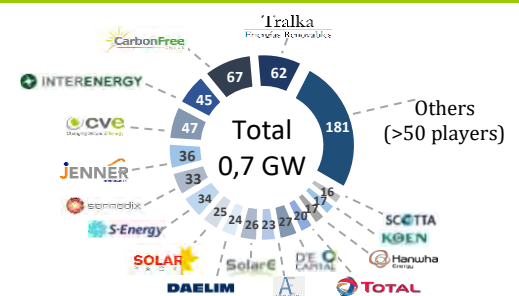
ERNC Installed Capacity [2]



Solar Installed Capacity [2]



Solar PMG/D Operating Projects Market Share [7]



¹ NCRE: Non Conventional Renewable Energy.

² Installed Capacity, CNE Jul 2020.

³ SEN's operation reports, CEN Jul 2020.

⁴ Projects under construction, CNE Jul 2020.

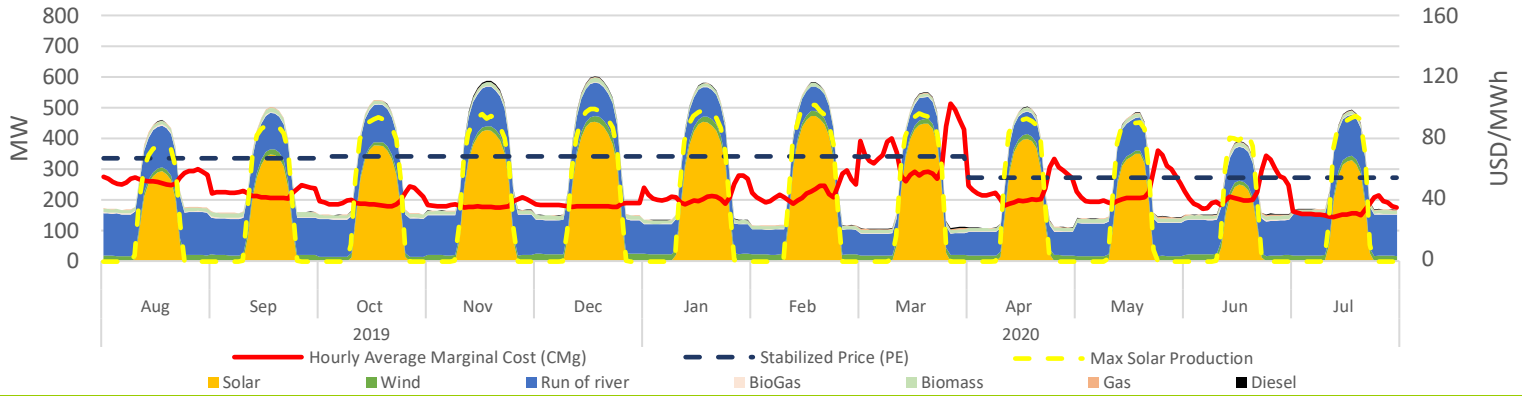
⁵ Projects approved during Jul-2020, SEIA.

⁶ Projects Currently being Evaluated, Jul-2020, SEIA.

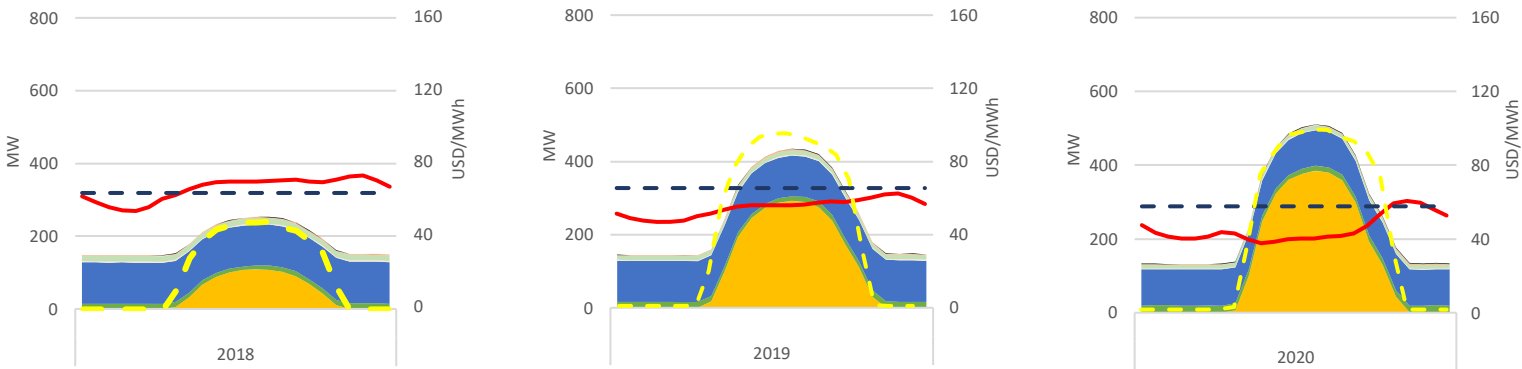
⁷ Based on public information.

⁸ Differences from previous reports are due to an update of the source database.

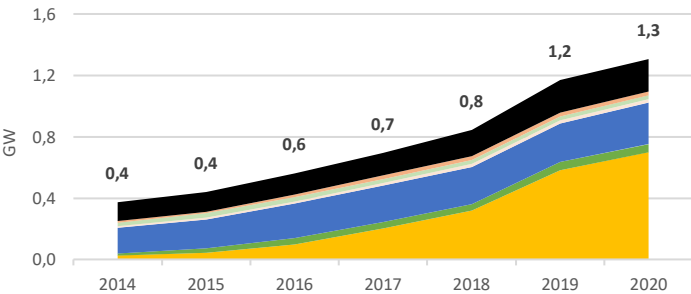
PMG/D Daily Hourly Average Production and Alto Jahuel's Prices



PMG/D Daily Hourly Average Production and Alto Jahuel's Prices

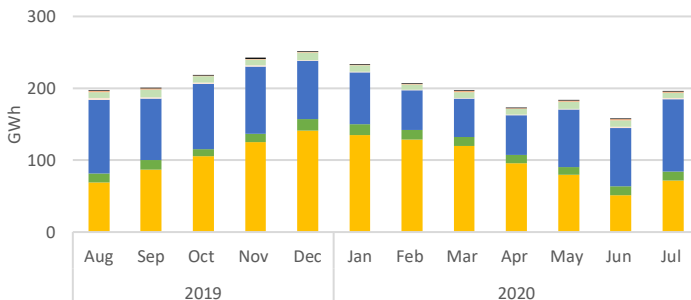


Installed Capacity by Technology



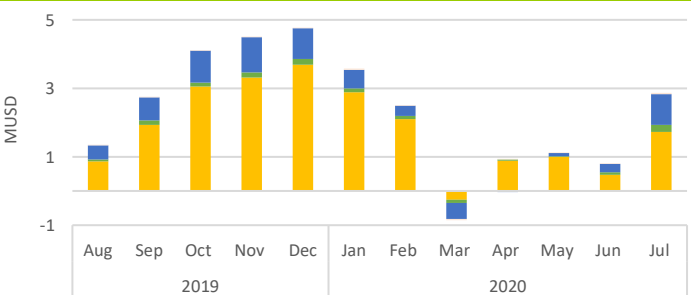
Technology MW	Jul-19	Jun-20 [8]	Jul-20	Jul-20 - Jun-20 Var. %
Solar	440	691	700	1%
Wind	42	51	51	0%
Run of river	245	262	271	3%
Biomass	27	27	27	0%
BioGas	18	22	22	0%
Gas	25	25	25	0%
Diesel	193	211	211	0%
Total	990	1.289	1.306	1%

Generation by Technology



Technology GWh	Jul-19	Jun-20 [8]	Jul-20	Jul-20 - Jun-20 Var. %
Solar	51	53	73	38%
Wind	14	13	13	-4%
Run of river	105	82	102	24%
Biomass	9	9	8	-10%
BioGas	2	2	2	-19%
Gas	2	2	2	-24%
Diesel	0	1	1	-19%
Total	184	162	199	23%

Stabilized Price Mechanism Cost



Technology kUSD	Jul-19	Jun-20	Jul-20	Jul-20 - Jun-20 Var. %
Solar	844	473	1.730	266%
Wind	71	72	194	171%
Run of river	559	244	904	270%
Biomass	0	0	0	0%
BioGas	3	13	41	219%
Gas	0	0	0	0%
Diesel	0	0	0	0%
Total	1.477	802	2.869	258%

