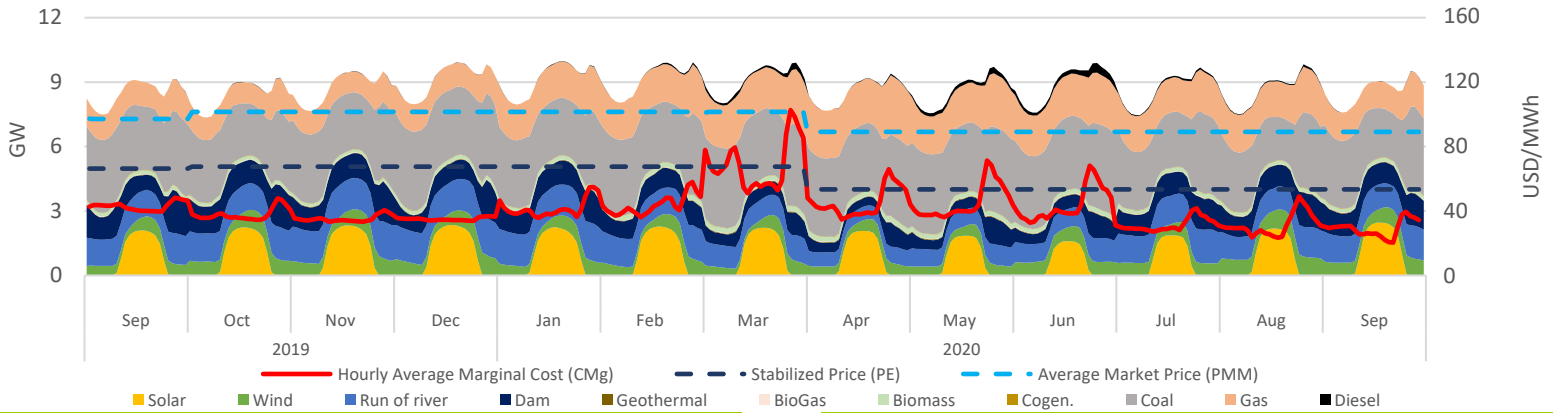


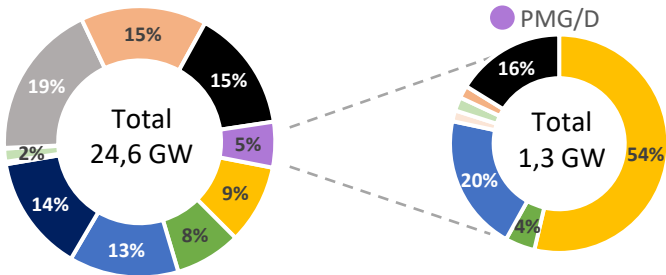
Executive Summary & Highlights

During September, SEN's installed capacity was 24.620 MW, producing a total of 6,13 TWh, where NCRE technologies represented an 24% of the produced energy (1,45 TWh). It is expected that an additional 8.591 MW come into operation between October 2020 and October 2024, of which 93% are NCRE plants (see "Summary Table - Projects Status"). Regarding the PMG/D segment, which represents 5% (1,3 GW) of SEN's installed capacity, and 4% (0,26 TWh) of the injected energy in the system, where solar stands out with 54% of the generation (141 GWh), followed by hydro with 37% (96 GWh) and wind representing 5% (12 GWh). Finally, the stabilized price mechanism cost above marginal price meant a systemic cost of MMUSD 5,9; cost that was distributed among Solar, Hydraulic and Wind generation plants as 4,4, 1,2 and 0,3 MMUSD respectively.

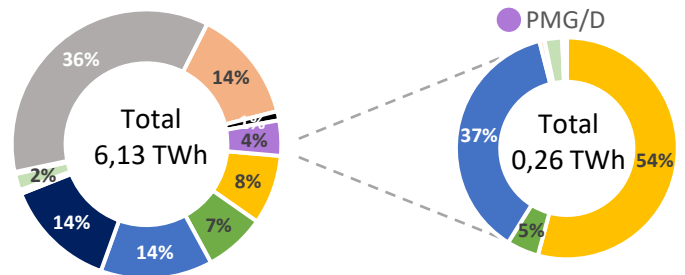
SEN Daily Hourly Average Technology Mix Production, and Alto Jahuel's Prices



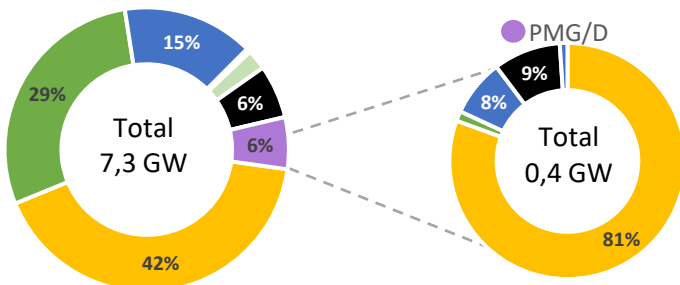
SEN's Installed Capacity [2] [8]



SEN's Generation [3]



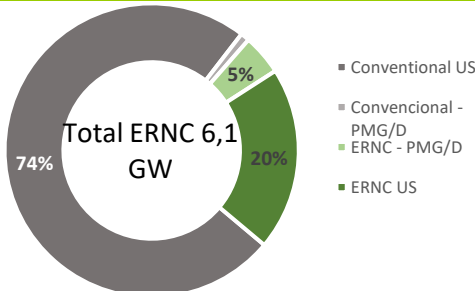
Projects Under Construction [4]



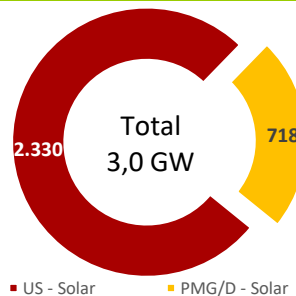
Summary Table – Project Status

Technology MW	Commissioning Stage [2]	Under Construction	Environmental Approved [5]	Environmental Undergoing [6]
Solar	159	3.365	263	714
Wind	136	2.092	0	0
Run of river	1	1.120	0	0
Geotérmica	0	33	0	0
Biomass	3	166	0	0
BioGas	3	5	0	0
Gas	26	0	0	0
Diesel	24	482	0	0
Total	352	7.262	263	714

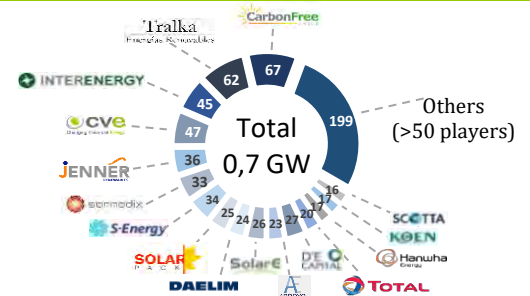
ERNC Installed Capacity [2]



Solar Installed Capacity [2]



Solar PMG/D Operating Projects Market Share [7]



¹ NCRE: Non Conventional Renewable Energy.

² Installed Capacity, CNE Aug 2020.

³ SEN's operation reports, CEN Aug 2020.

⁴ Projects under construction, CNE Aug 2020.

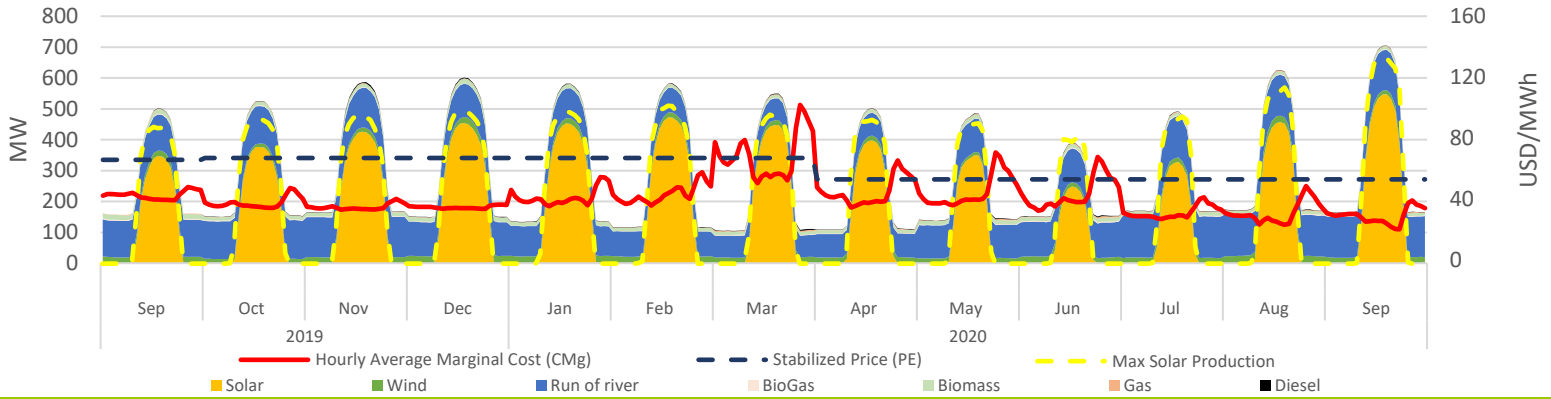
⁵ Projects approved during Aug-2020, SEIA.

⁶ Projects Currently being Evaluated, Aug-2020, SEIA.

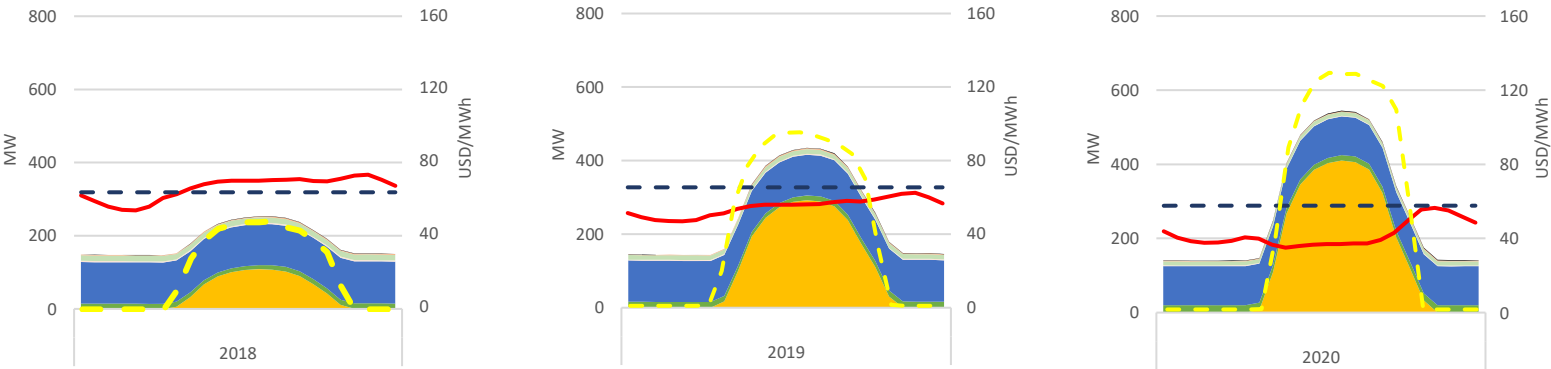
⁷ Based on public information.

⁸ Differences from previous reports are due to an update of the source database.

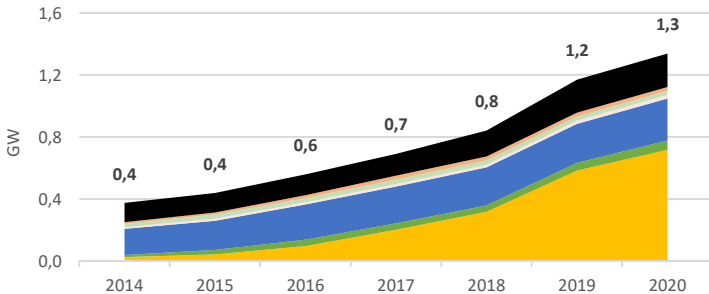
PMG/D Daily Hourly Average Production and Alto Jahuel's Prices



PMG/D Daily Hourly Average Production and Alto Jahuel's Prices

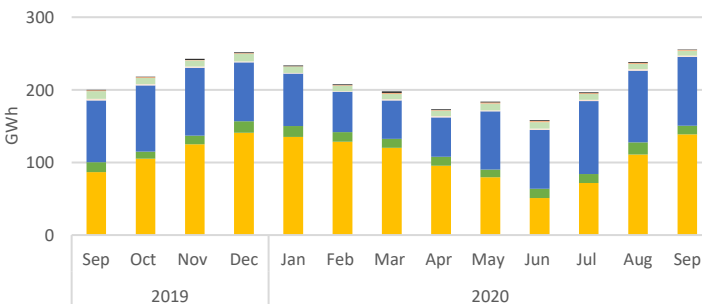


Installed Capacity by Technology



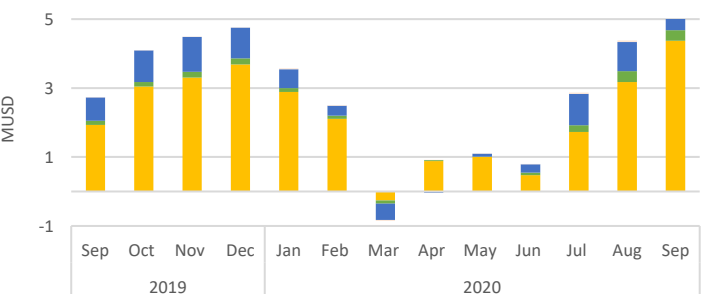
Technology MW	Sep-19	Aug-20 [8]	Sep-20	Sep-20 - Aug-20 Var. %
Solar	508	700	718	3%
Wind	51	51	59	16%
Run of river	245	271	271	0%
Biomass	27	27	27	0%
BioGas	18	22	22	0%
Gas	25	25	25	0%
Diesel	196	211	217	3%
Total	1.069	1.306	1.338	2%

Generation by Technology



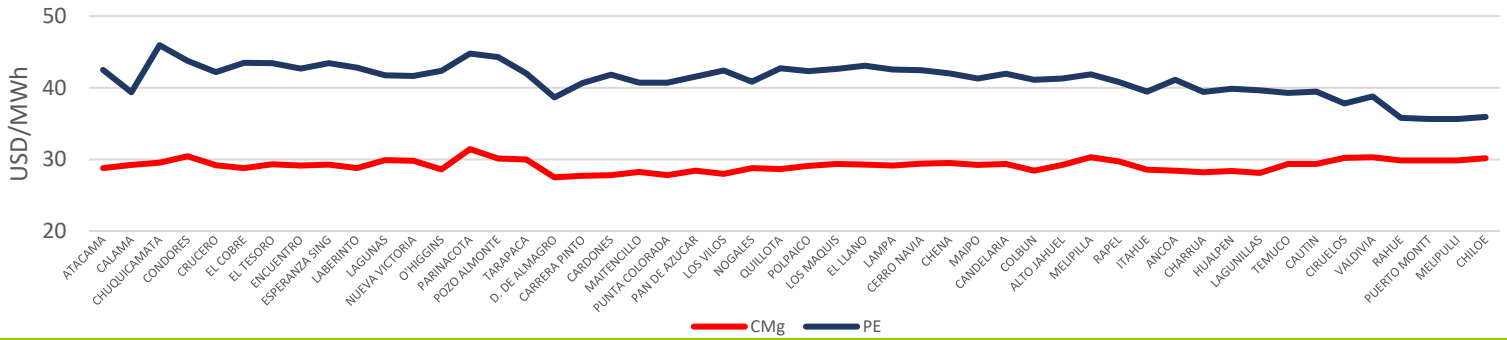
Technology GWh	Sep-19	Aug-20 [8]	Sep-20	Sep-20 - Aug-20 Var. %
Solar	87	113	141	25%
Wind	14	17	12	-28%
Run of river	88	100	96	-4%
Biomass	11	7	7	-10%
BioGas	2	2	2	-12%
Gas	1	2	1	-32%
Diesel	0	1	1	-7%
Total	203	242	260	7%

Stabilized Price Mechanism Cost

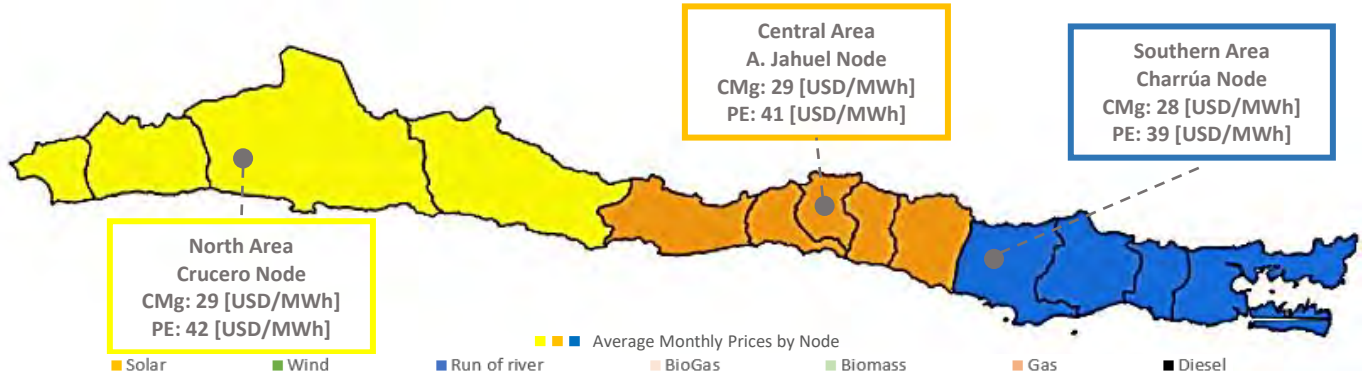


Technology kUSD	Sep-19	Aug-20	Sep-20	Sep-20 - Aug-20 Var. %
Solar	1.934	3.177	4.376	38%
Wind	122	315	301	-4%
Run of river	671	841	1.154	37%
Biomass	0	0	0	0%
BioGas	4	48	50	3%
Gas	0	0	0	0%
Diesel	0	0	0	0%
Total	2.731	4.381	5.881	34%

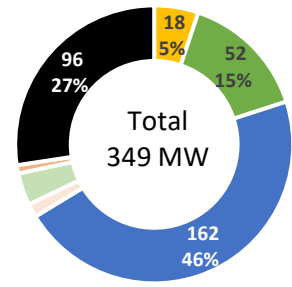
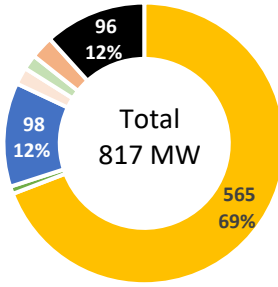
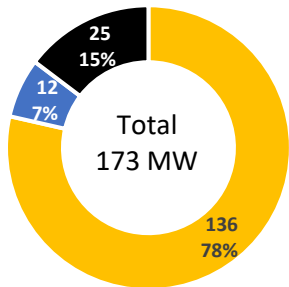
Average Monthly Prices by Node



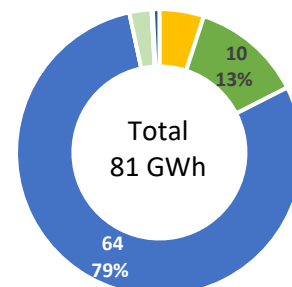
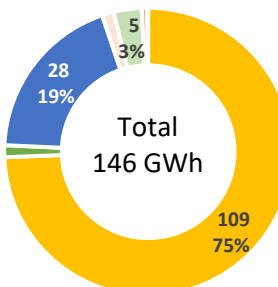
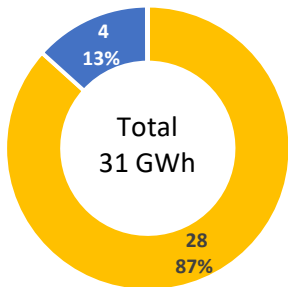
SEN's September - 2020 Average Prices by Node and Geographic Area



PMG/D Installed Capacity by Geographic Area



PMG/D Generation by Geographic Area



PMG/D Stabilized Price Mechanism Cost by Geographic Area

