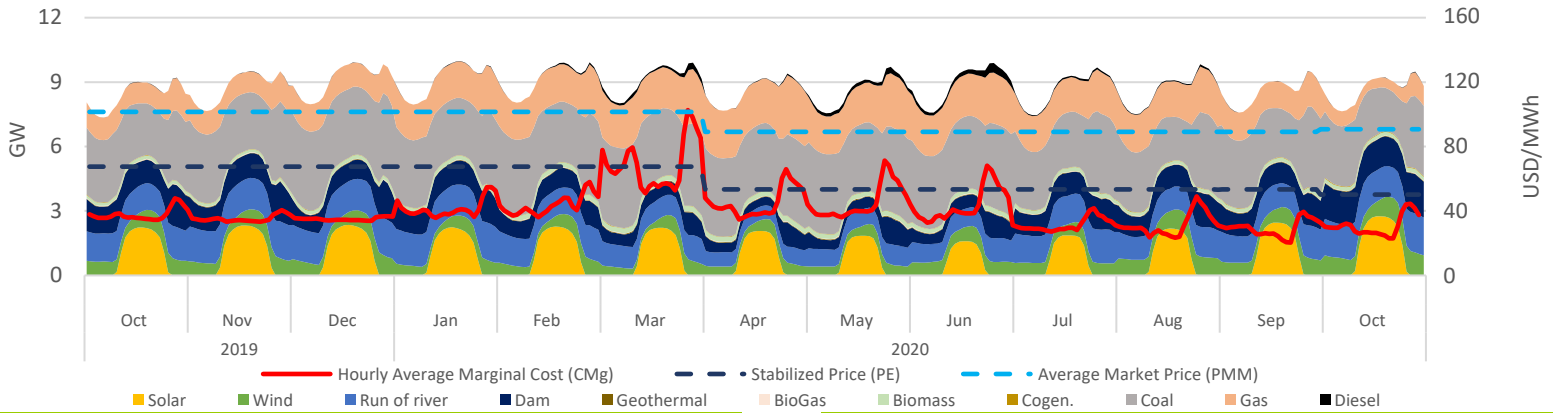


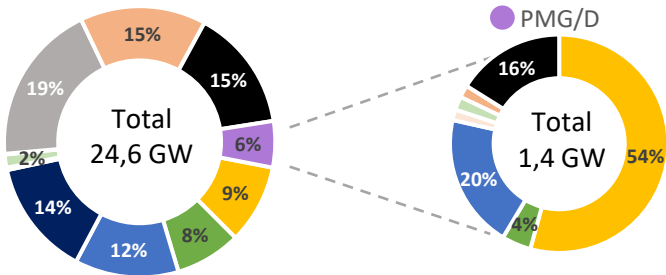
Executive Summary & Highlights

During October, SEN's installed capacity was 24.643 MW, producing a total of 6,39 TWh, where NCRE technologies represented an 28% of the produced energy (1,78 TWh). It is expected that an additional 8.655 MW come into operation between November 2020 and November 2024, of which 94% are NCRE plants (see "Summary Table - Projects Status"). Regarding the PMG/D segment, which represents 5% (1,4 GW) of SEN's installed capacity, and 4% (0,3 TWh) of the injected energy in the system, where solar stands out with 61% of the generation (183 GWh), followed by hydro with 31% (92 GWh) and wind representing 5% (15 GWh). Finally, the stabilized price mechanism cost above marginal price meant a systemic cost of MMUSD 6,2; cost that was distributed among Solar, Hydraulic and Wind generation plants as 5, 0,96 and 0,27 MMUSD respectively.

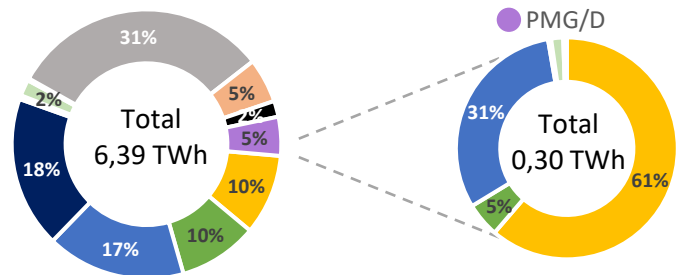
SEN Daily Hourly Average Technology Mix Production, and Alto Jahuel's Prices



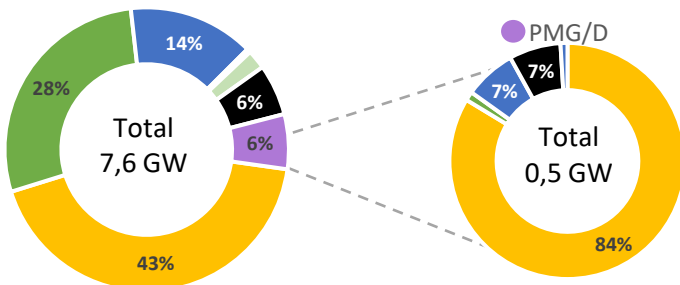
SEN's Installed Capacity [2] [8]



SEN's Generation [3]



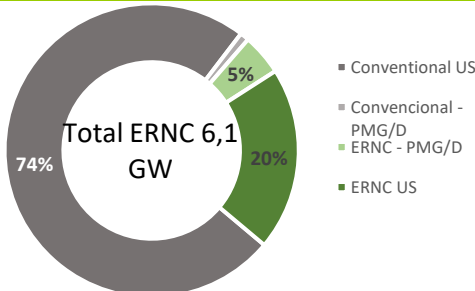
Projects Under Construction [4]



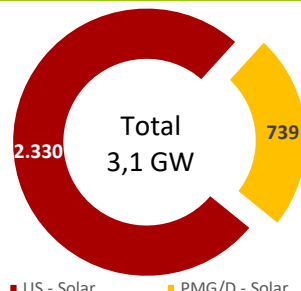
Summary Table – Project Status

Technology MW	Commissioning Stage [2]	Under Construction	Environmental Approved [5]	Undergoing [6]
Solar	141	3.657	90	72
Wind	136	2.130	0	562
Run of river	2	1.120	0	0
Geotérmica	0	33	0	0
Biomass	3	166	0	0
BioGas	3	5	0	0
Gas	26	0	0	0
Diesel	25	476	9	0
Total	336	7.586	99	634

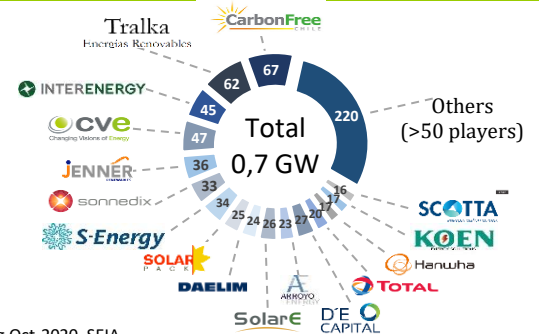
ERNC Installed Capacity [2]



Solar Installed Capacity [2]



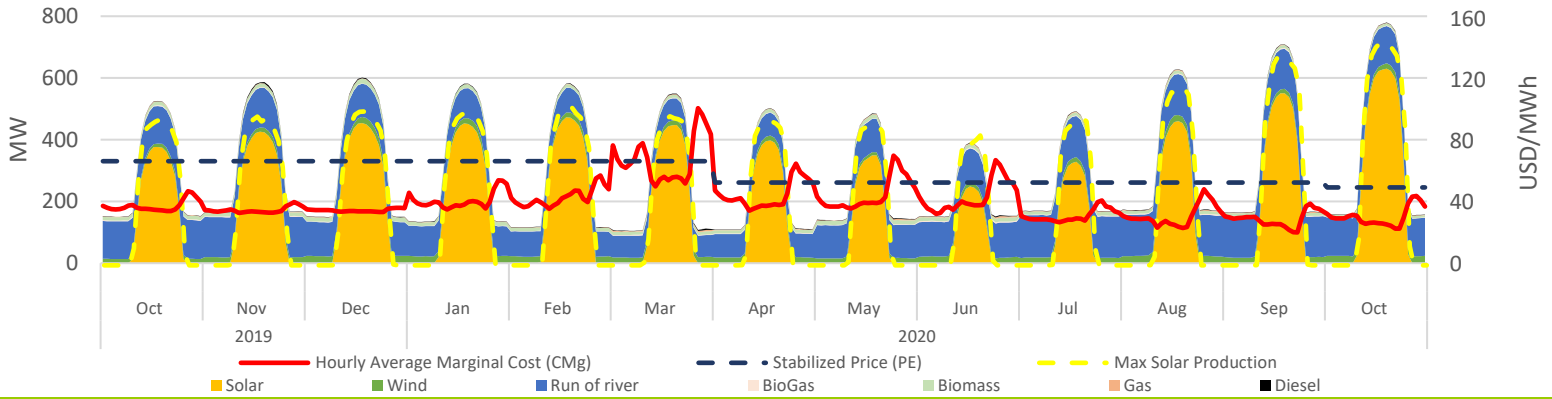
Solar PMG/D Operating Projects Market Share [7]



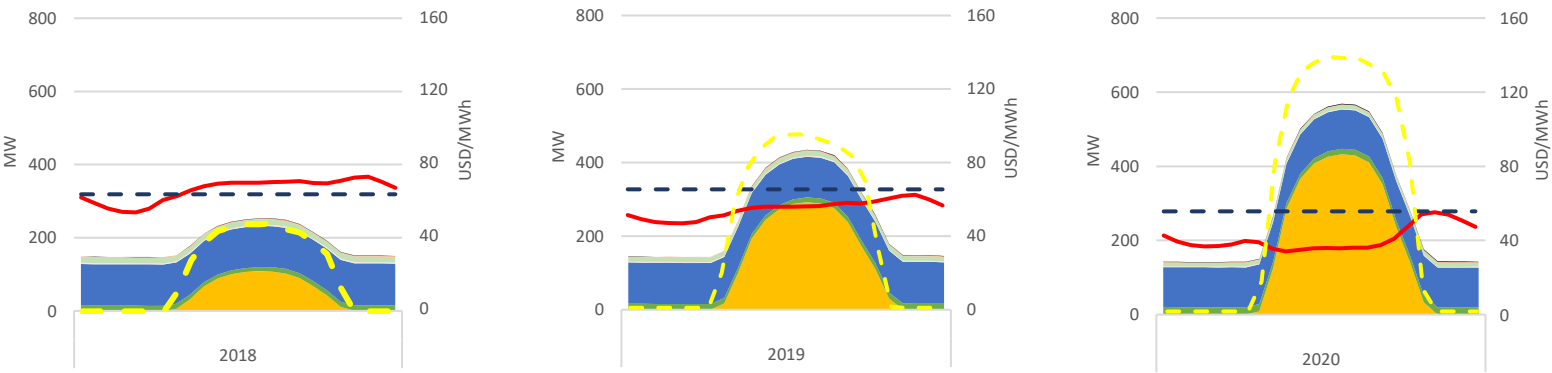
¹ NCRE: Non Conventional Renewable Energy.
² Installed Capacity, CNE Oct 2020.
³ SEN's operation reports, CEN Oct 2020.
⁴ Projects under construction, CNE Oct 2020.

⁵ Projects approved during Oct-2020, SEIA.
⁶ Projects Currently being Evaluated, Oct-2020, SEIA.
⁷ Based on public information.

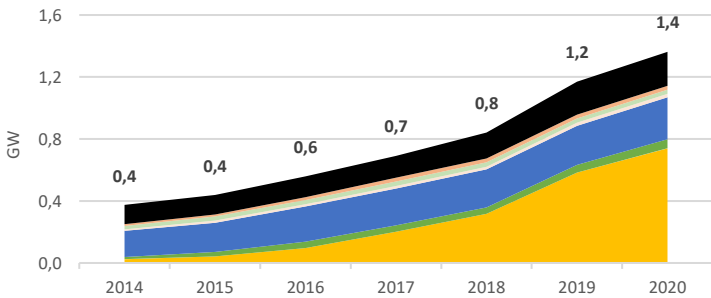
PMG/D Daily Hourly Average Production and Alto Jahuel's Prices



PMG/D Daily Hourly Average Production and Alto Jahuel's Prices

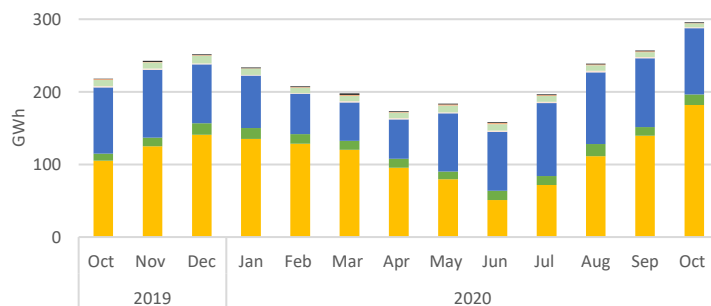


Installed Capacity by Technology



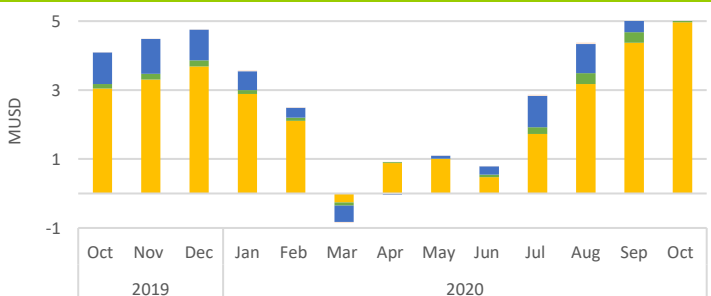
Technology MW	Oct-19	Sep-20 [8]	Oct-20	Oct-20 - Sep-20 Var. %
Solar	528	718	739	3%
Wind	51	59	59	0%
Run of river	248	271	271	0%
Biomass	27	27	27	0%
BioGas	18	22	22	0%
Gas	25	25	25	0%
Diesel	202	217	219	1%
Total	1.099	1.338	1.362	2%

Generation by Technology



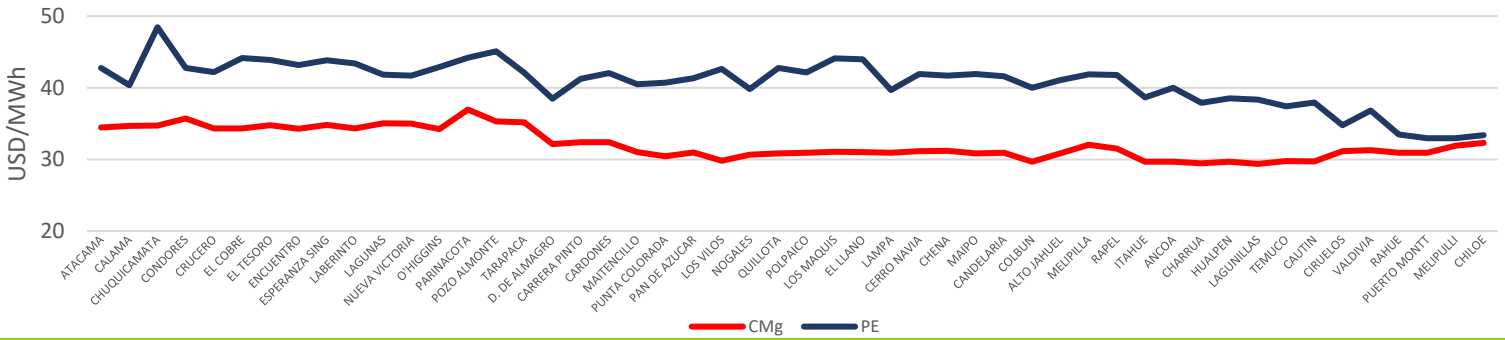
Technology GWh	Oct-19	Sep-20 [8]	Oct-20	Oct-20 - Sep-20 Var. %
Solar	106	141	183	30%
Wind	10	12	15	24%
Run of river	93	96	92	-4%
Biomass	8	7	5	-21%
BioGas	2	2	1	-30%
Gas	1	1	1	-23%
Diesel	0	1	1	3%
Total	221	260	299	15%

Stabilized Price Mechanism Cost

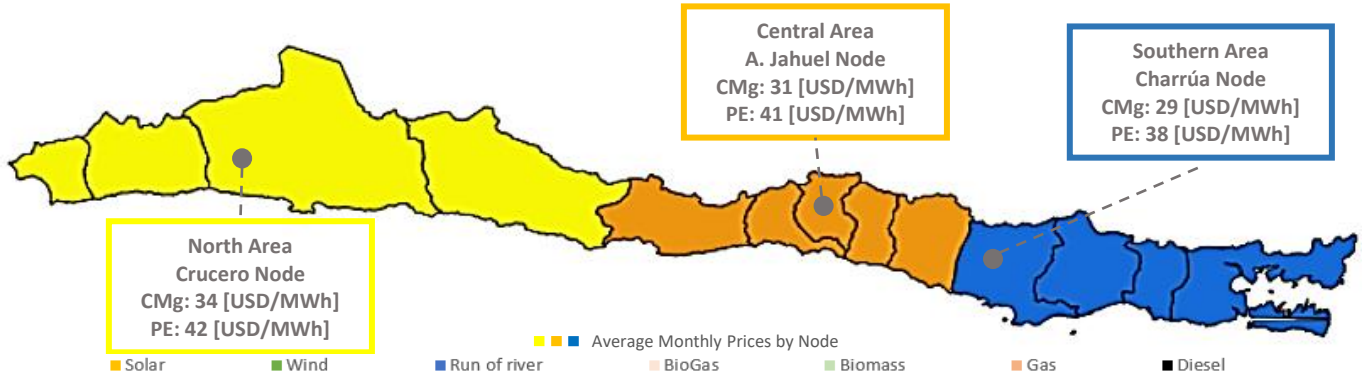


Technology kUSD	Oct-19	Sep-20	Oct-20	Oct-20 - Sep-20 Var. %
Solar	3.049	4.376	4.963	13%
Wind	125	301	273	-9%
Run of river	920	1.154	956	-17%
Biomass	0	0	0	0%
BioGas	2	50	45	-8%
Gas	0	0	0	0%
Diesel	0	0	0	0%
Total	4.097	5.881	6.237	6%

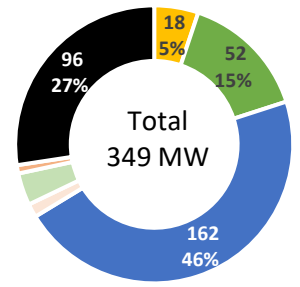
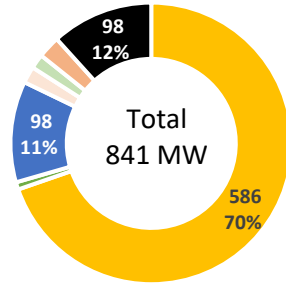
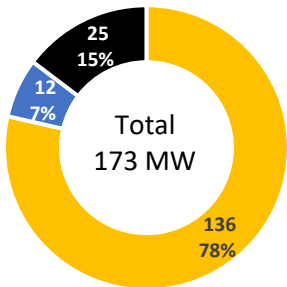
Average Monthly Prices by Node



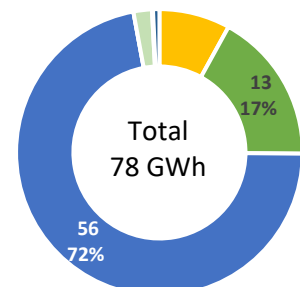
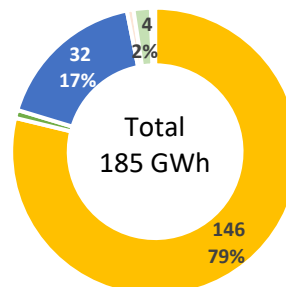
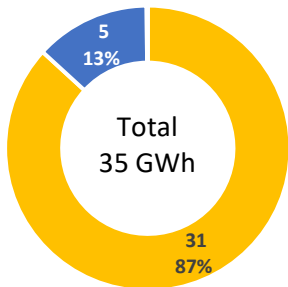
SEN's October - 2020 Average Prices by Node and Geographic Area



PMG/D Installed Capacity by Geographic Area



PMG/D Generation by Geographic Area



PMG/D Stabilized Price Mechanism Cost by Geographic Area

