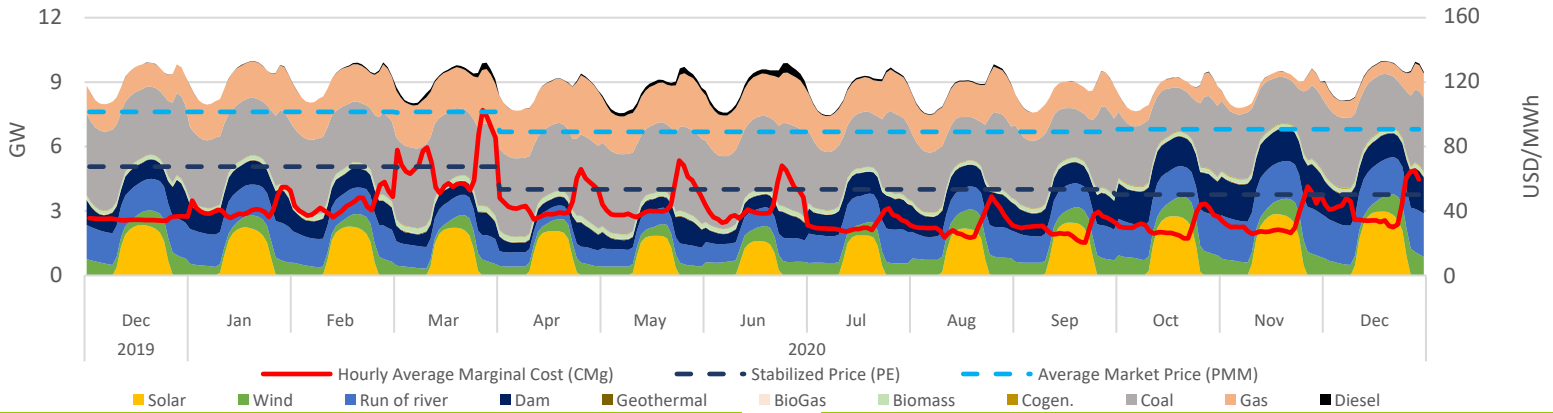


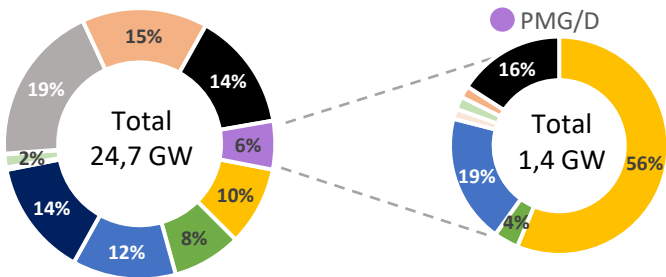
Executive Summary & Highlights

During December, SEN's installed capacity was 24.705 MW, producing a total of 6,83 TWh, where NCRE technologies represented an 27% of the produced energy (1,83 TWh). It is expected that an additional 9.745 MW come into operation between November 2020 and November 2024, of which 95% are NCRE plants (see "Summary Table - Projects Status"). Regarding the PMG/D segment, which represents 6% (1,4 GW) of SEN's installed capacity, and 5% (0,3 TWh) of the injected energy in the system, where solar stands out with 64% of the generation (217 GWh), followed by hydro with 28% (95 GWh) and wind representing 5% (18 GWh). Finally, the stabilized price mechanism cost above marginal price meant a systemic cost of MMUSD 5,7; cost that was distributed among Solar, Hydraulic and Wind generation plants as 5,1; 0,4 and 0,2 MMUSD respectively.

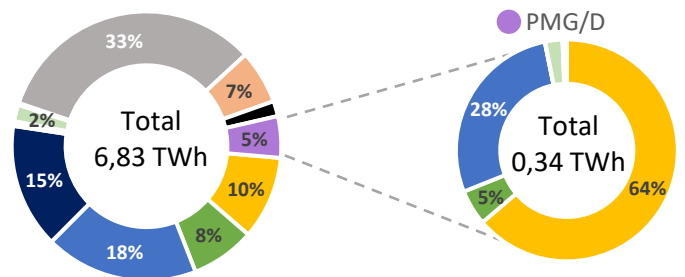
SEN Daily Hourly Average Technology Mix Production, and Alto Jahuel's Prices



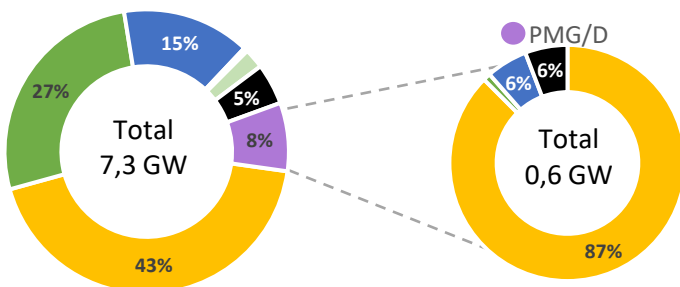
SEN's Installed Capacity [2]



SEN's Generation [3]



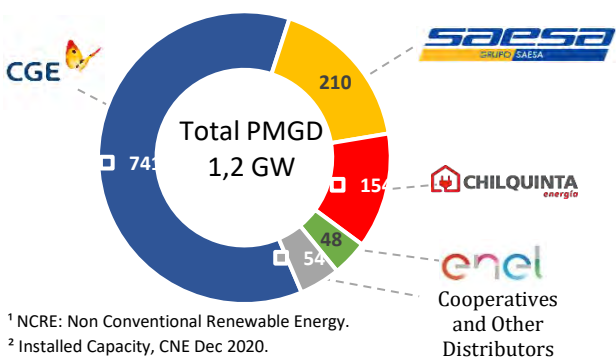
Projects Under Construction [4]



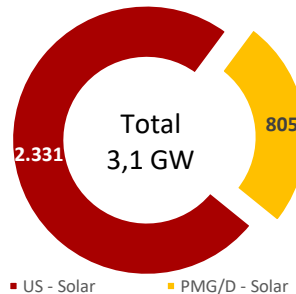
Summary Table – Project Status

Technology MW	Commissioning		Environmental	
	Stage [2]	Under Construction	Approved [5]	Undergoing [6]
Solar	96	3.674	323	303
Wind	419	1.958	0	1.147
Run of river	17	1.099	0	0
Geotérmica	0	33	0	0
Biomass	3	166	0	0
BioGas	3	0	0	0
Gas	26	0	0	0
Diesel	104	375	0	0
Total	668	7.305	323	1.450

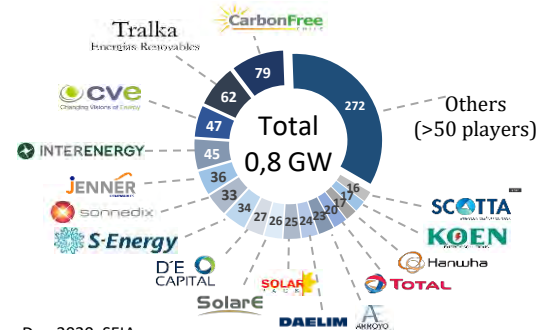
PMGD Installed Capacity by Distributor [7]



Solar Installed Capacity [2]



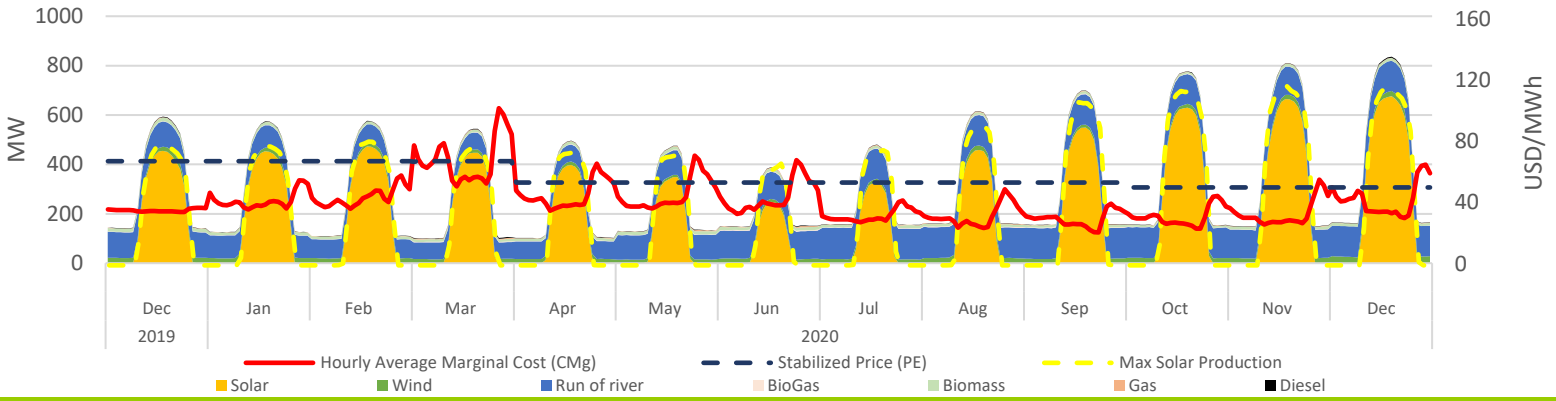
Solar PMG/D Operating Projects Market Share [7]



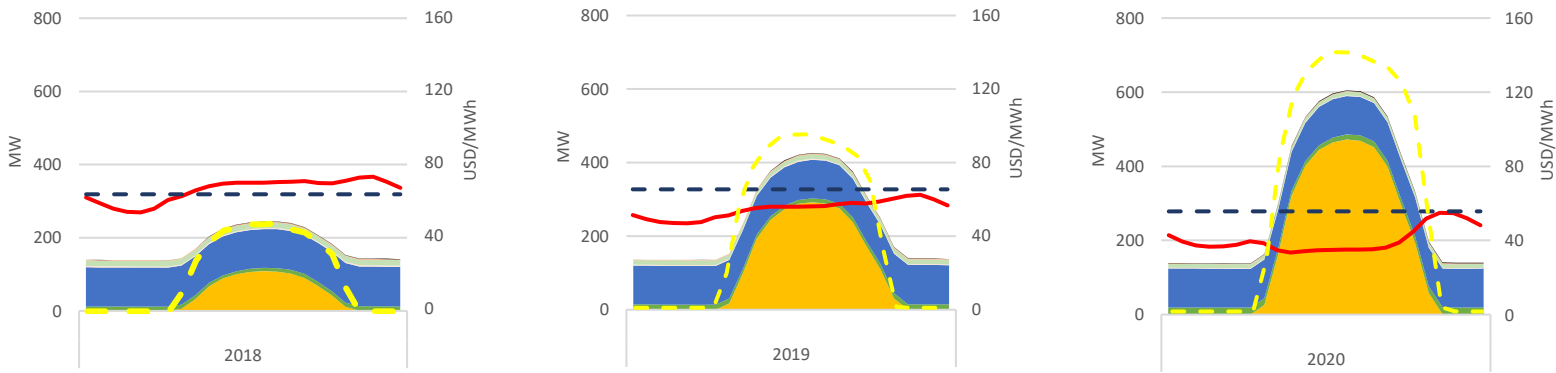
¹ NCRE: Non Conventional Renewable Energy.
² Installed Capacity, CNE Dec 2020.
³ SEN's operation reports, CEN Dec 2020.
⁴ Projects under construction, CNE Dec 2020.

⁵ Projects approved during Dec-2020, SEIA.
⁶ Projects Currently being Evaluated, Dec-2020, SEIA.
⁷ Based on public information.

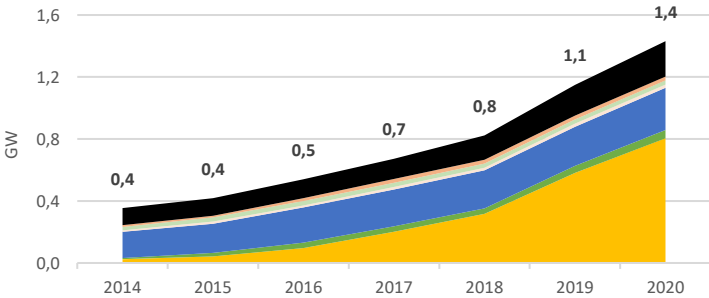
PMG/D Daily Hourly Average Production and Alto Jahuel's Prices



PMG/D Daily Hourly Average Production and Alto Jahuel's Prices

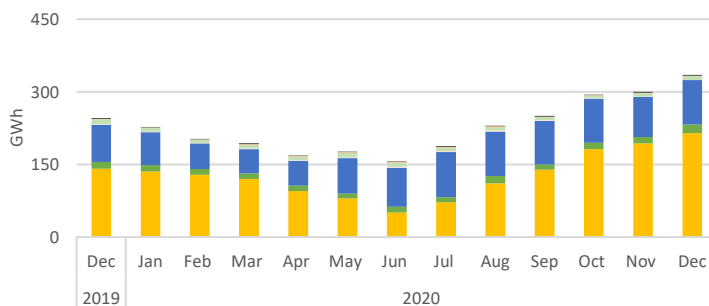


Installed Capacity by Technology



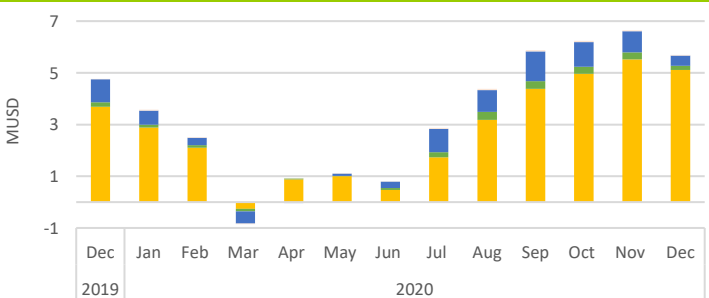
Technology MW	Dec-19	Nov-20	Dec-20	Dec-20 - Nov-20 Var. %
Solar	556	798	805	1%
Wind	44	53	53	0%
Run of river	252	272	272	0%
Biomass	27	27	27	0%
BioGas	22	22	22	0%
Gas	25	25	25	0%
Diesel	191	233	227	-2%
Total	1.118	1.430	1.431	0%

Generation by Technology



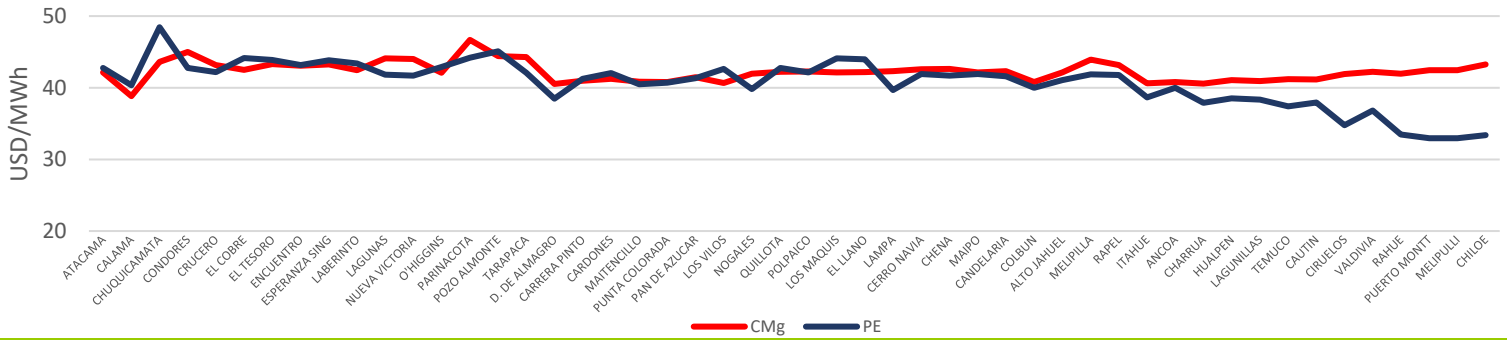
Technology GWh	Dec-19	Nov-20	Dec-20	Dec-20 - Nov-20 Var. %
Solar	141	192	217	13%
Wind	14	13	18	32%
Run of river	83	84	95	13%
Biomass	11	8	9	6%
BioGas	1	1	0	-78%
Gas	1	1	1	2%
Diesel	1	1	1	93%
Total	252	300	340	13%

Stabilized Price Mechanism Cost

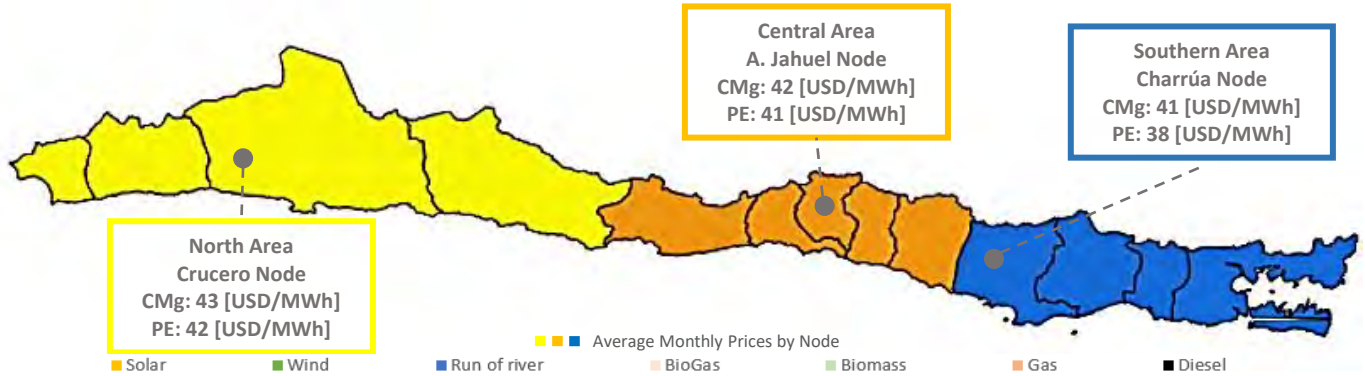


Technology kUSD	Dec-19	Nov-20	Dec-20	Dec-20 - Nov-20 Var. %
Solar	3.688	5.525	5.105	-8%
Wind	176	268	172	-36%
Run of river	888	820	389	-53%
Biomass	0	0	0	0%
BioGas	3	36	21	-42%
Gas	0	0	0	0%
Diesel	0	0	0	0%
Total	4.754	6.649	5.687	-14%

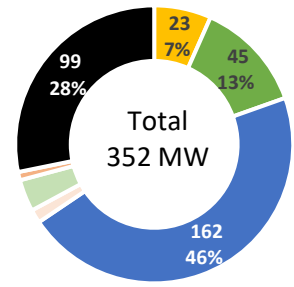
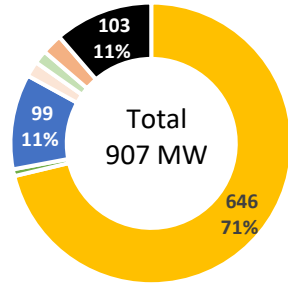
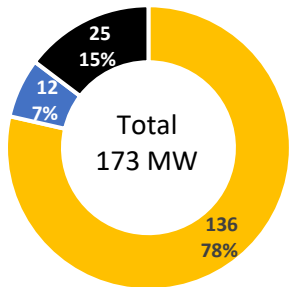
Average Monthly Prices by Node



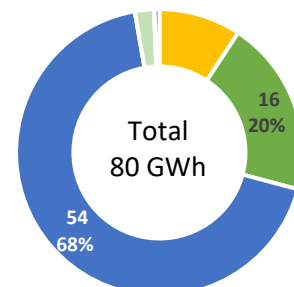
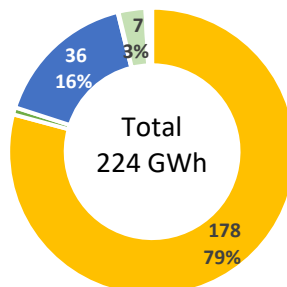
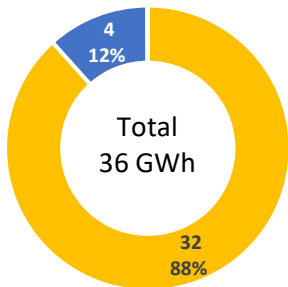
SEN's December - 2020 Average Prices by Node and Geographic Area



PMG/D Installed Capacity by Geographic Area



PMG/D Generation by Geographic Area



PMG/D Stabilized Price Mechanism Cost by Geographic Area

