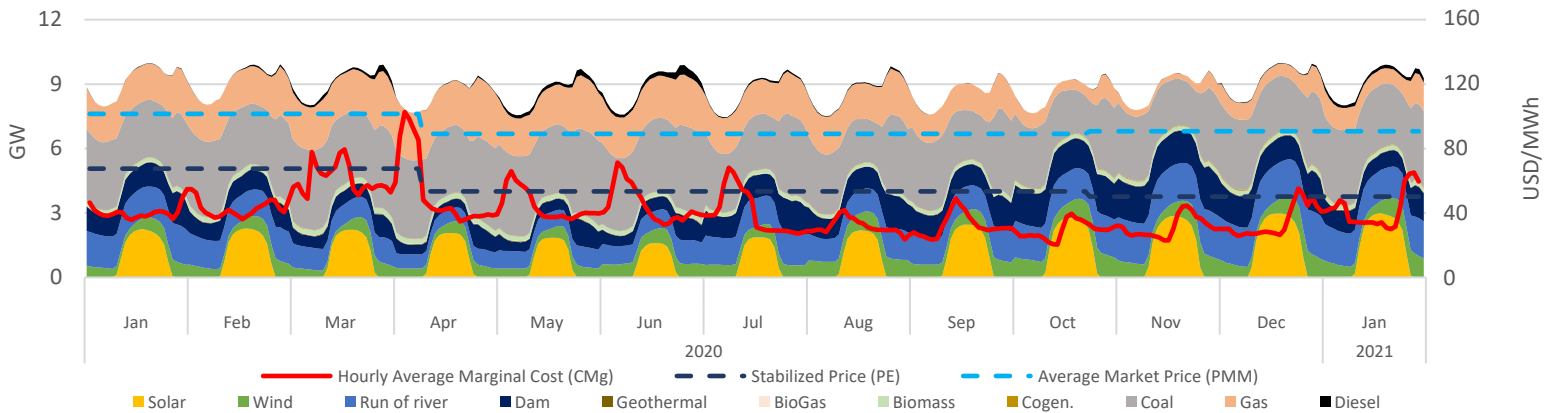


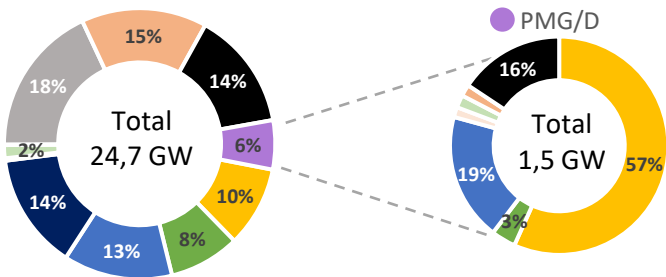
Executive Summary & Highlights

During December, SEN's installed capacity was 24.714 MW, producing a total of 6,76 TWh, where NCRE technologies represented an 27% of the produced energy (1,8 TWh). It is expected that an additional 11.208 MW come into operation between November 2020 and November 2024, of which 95% are NCRE plants (see "Summary Table - Projects Status"). Regarding the PMG/D segment, which represents 6% (1,5 GW) of SEN's installed capacity, and 5% (0,33 TWh) of the injected energy in the system, where solar stands out with 69% of the generation (229 GWh), followed by hydro with 21% (71 GWh) and wind representing 6% (18 GWh). Finally, the stabilized price mechanism cost above marginal price meant a systemic cost of MMUSD 1,8; cost that was distributed among Solar, Hydraulic and Wind generation plants as 2,5; -0,6 and -0,1 MMUSD respectively.

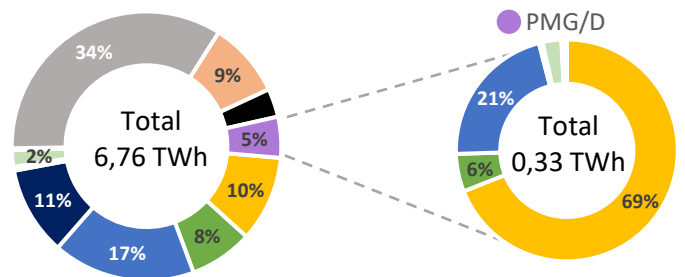
SEN Daily Hourly Average Technology Mix Production, and Alto Jahuel's Prices



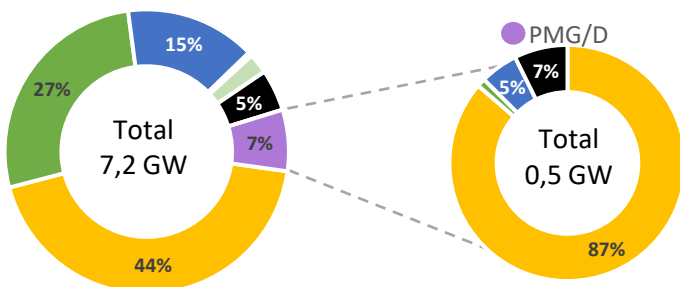
SEN's Installed Capacity [2]



SEN's Generation [3]



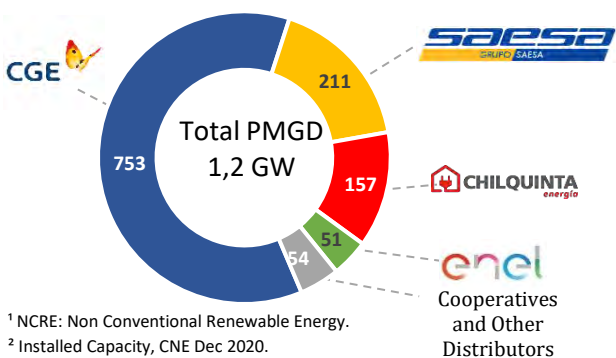
Projects Under Construction [4]



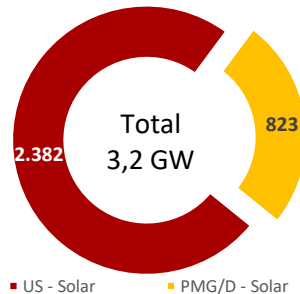
Summary Table – Project Status

Technology MW	Commissioning		Environmental	
	Stage [2]	Under Construction	Approved [5]	Undergoing [6]
Solar	230	3.599	573	1.774
Wind	533	1.958	0	610
Run of river	16	1.102	0	0
Geotérmica	0	33	0	0
Biomass	3	166	0	0
BioGas	3	0	0	0
Gas	26	0	0	0
Diesel	204	379	0	0
Total	1.015	7.236	573	2.384

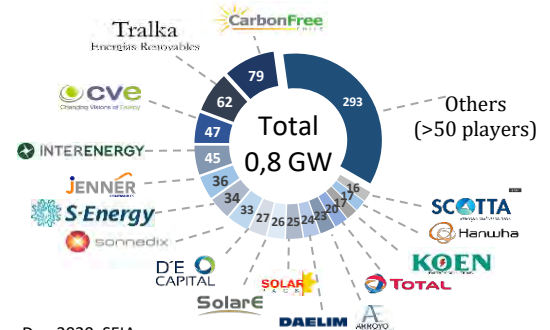
PMGD Installed Capacity by Distributor [7]



Solar Installed Capacity [2]



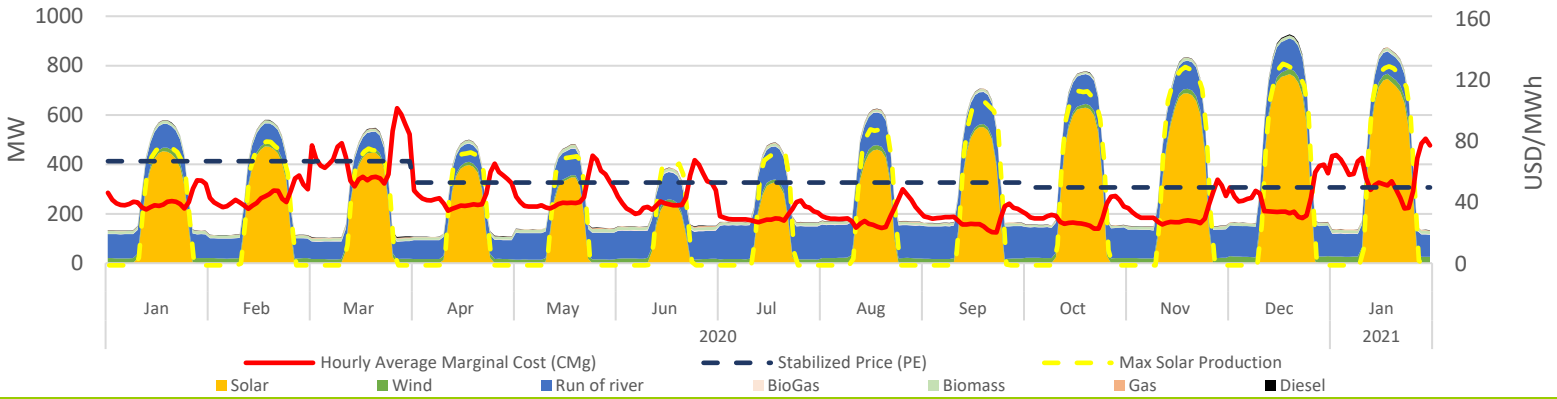
Solar PMG/D Operating Projects Market Share [7]



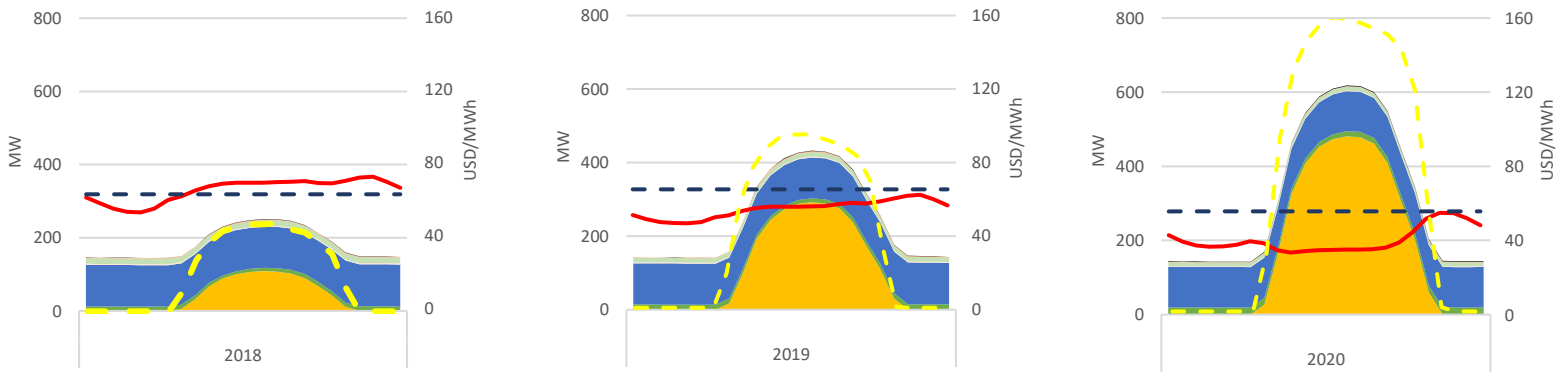
¹ NCRE: Non Conventional Renewable Energy.
² Installed Capacity, CNE Dec 2020.
³ SEN's operation reports, CEN Dec 2020.
⁴ Projects under construction, CNE Dec 2020.

⁵ Projects approved during Dec-2020, SEIA.
⁶ Projects Currently being Evaluated, Dec-2020, SEIA.
⁷ Based on public information.

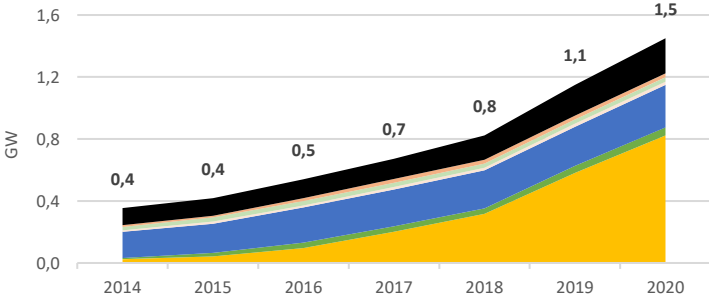
PMG/D Daily Hourly Average Production and Alto Jahuel's Prices



PMG/D Daily Hourly Average Production and Alto Jahuel's Prices

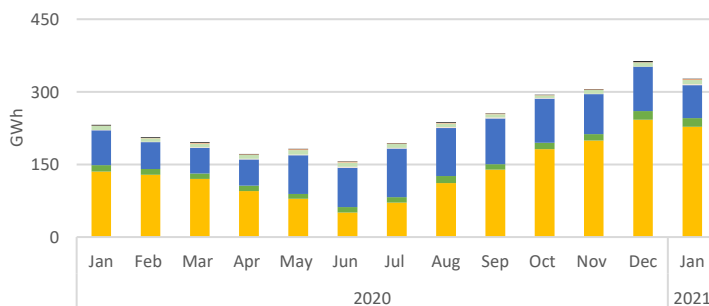


Installed Capacity by Technology



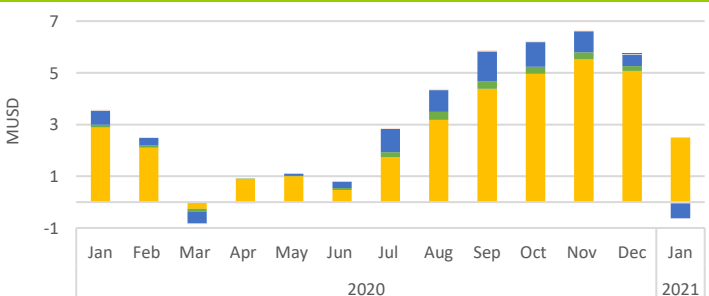
Technology MW	Jan-19	Dec-20	Jan-21	Jan-21 - Dec-20 Var. %
Solar	581	805	823	2%
Wind	44	53	53	0%
Run of river	253	272	274	1%
Biomass	27	27	27	0%
BioGas	22	22	22	0%
Gas	25	25	25	0%
Diesel	197	227	227	0%
Total	1.149	1.431	1.450	1%

Generation by Technology



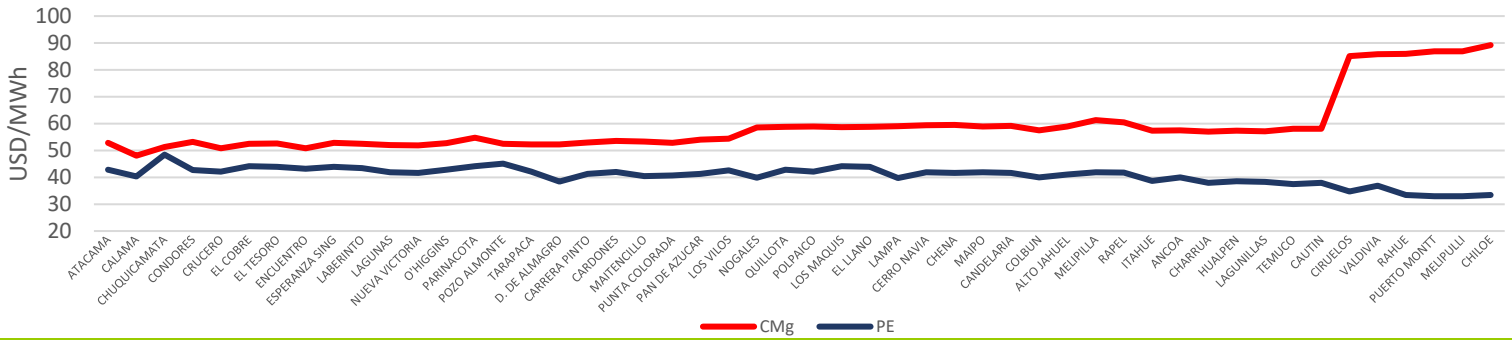
Technology GWh	Jan-19	Dec-20	Jan-21	Jan-21 - Dec-20 Var. %
Solar	136	217	229	-5%
Wind	13	18	18	4%
Run of river	75	95	71	-25%
Biomass	9	9	9	6%
BioGas	1	0	2	788%
Gas	1	1	2	107%
Diesel	1	1	1	-29%
Total	236	340	332	-9%

Stabilized Price Mechanism Cost

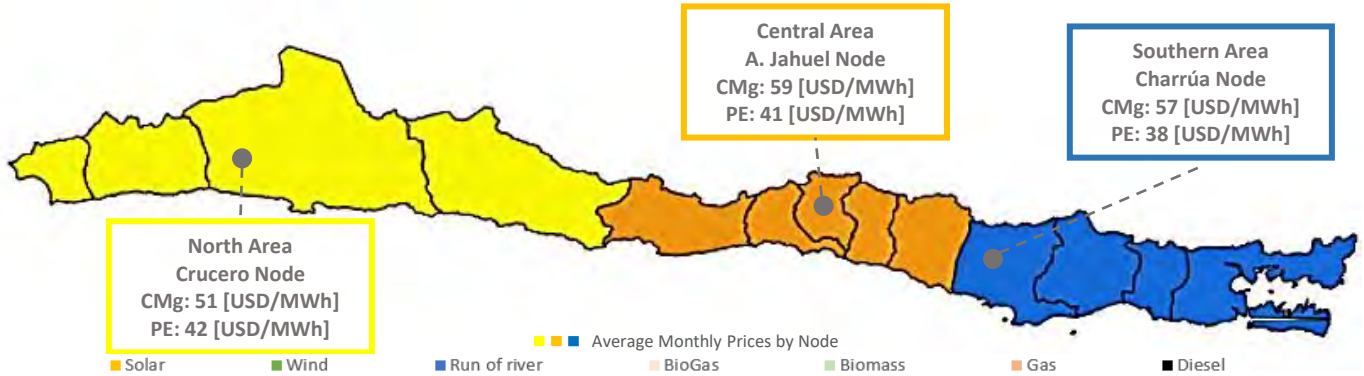


Technology kUSD	Jan-19	Dec-20	Jan-21	Jan-21 - Dec-20 Var. %
Solar	2.889	5.080	2.494	-51%
Wind	107	181	-61	-134%
Run of river	546	441	-576	-231%
Biomass	0	0	0	0%
BioGas	32	21	-7	-134%
Gas	0	0	0	0%
Diesel	0	0	0	0%
Total	3.574	5.749	1.850	-68%

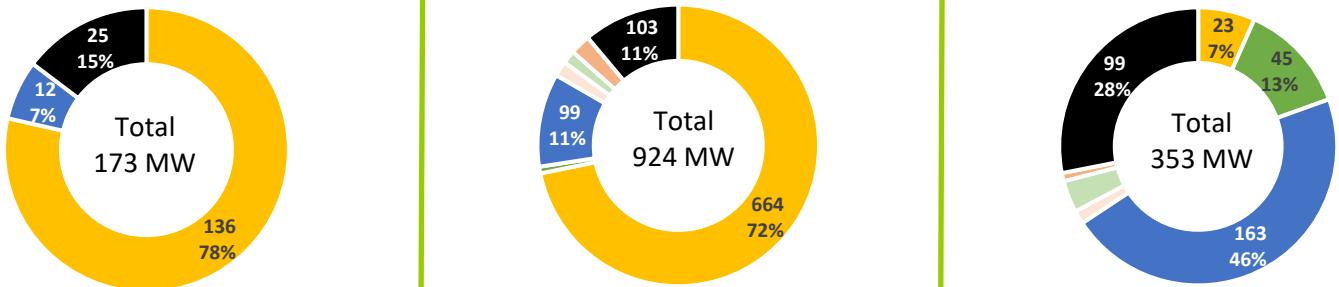
Average Monthly Prices by Node



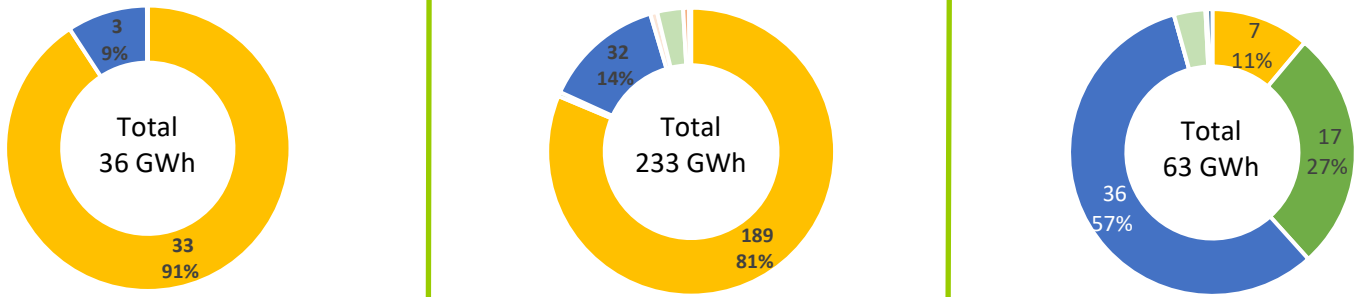
SEN's January - 2021 Average Prices by Node and Geographic Area



PMG/D Installed Capacity by Geographic Area



PMG/D Generation by Geographic Area



PMG/D Stabilized Price Mechanism Cost by Geographic Area

