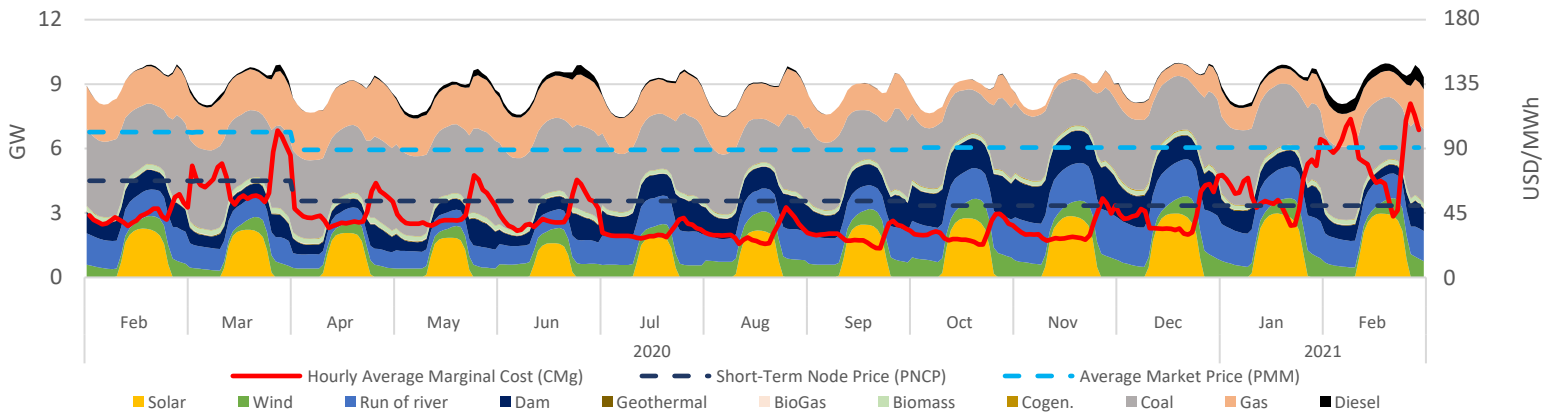


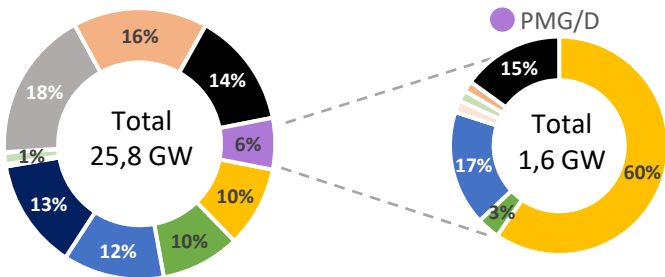
Executive Summary & Highlights

During Feb, SEN's installed capacity was 25.773 MW, producing a total of 6,15 TWh, where NCRE technologies represented an 25% of the produced energy (1,51 TWh). It is expected that an additional 7.856 MW come into operation, of which 95% are NCRE plants (see "Summary Table - Projects Status"). Regarding the PMG/D segment, which represents 6% (1,6 GW) of SEN's installed capacity, and 4% (0,27 TWh) of the injected energy in the system, where solar stands out with 71% of the generation (217 GWh), followed by hydro with 20% (54 GWh) and wind representing 4% (11 GWh). Finally, the stabilized price mechanism cost above marginal price meant a systemic benefit of MMUSD 3,3; that was distributed among Solar, Hydraulic and Wind generation plants as 1,2; 1,6 and 0,5 MMUSD respectively.

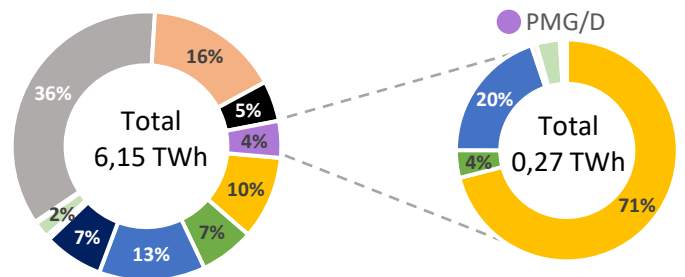
SEN Daily Hourly Average Technology Mix Production, and Alto Jahuel's Prices



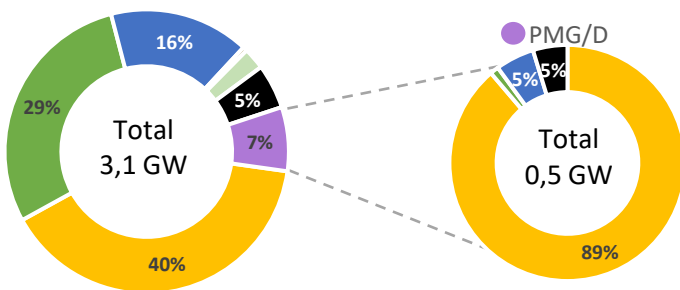
SEN's Installed Capacity [2]



SEN's Generation [3]



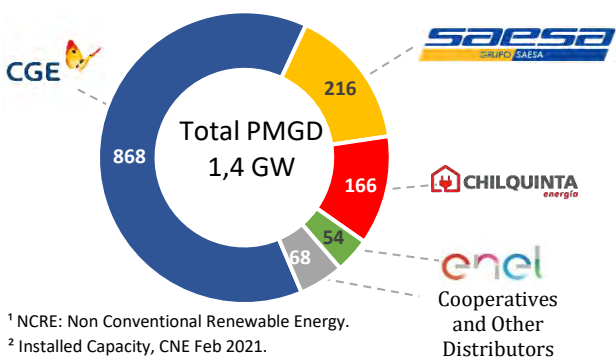
Projects Under Construction [4]



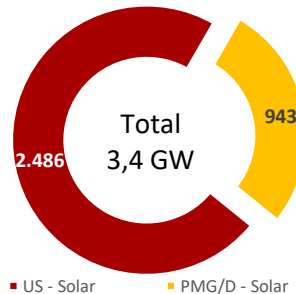
Summary Table – Project Status

Technology MW	Commissioning Stage [2]	Under Construction	Environmental Approved [5]	Environmental Undergoing [6]
Solar	5	3.116	691	376
Wind	0	1.958	0	25
Run of river	0	1.102	0	0
Geotérmica	0	33	0	0
Biomass	19	166	0	0
BioGas	0	0	0	0
Gas	0	0	0	0
Diesel	0	365	0	0
Total	24	6.740	691	402

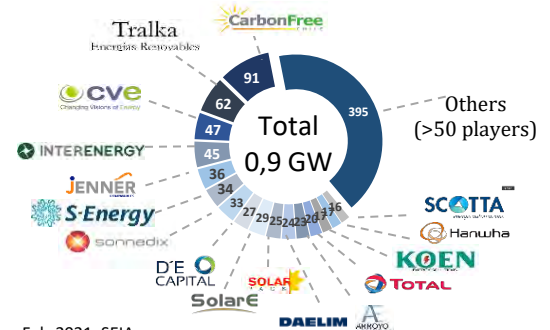
PMGD Installed Capacity by Distributor [7]



Solar Installed Capacity [2]



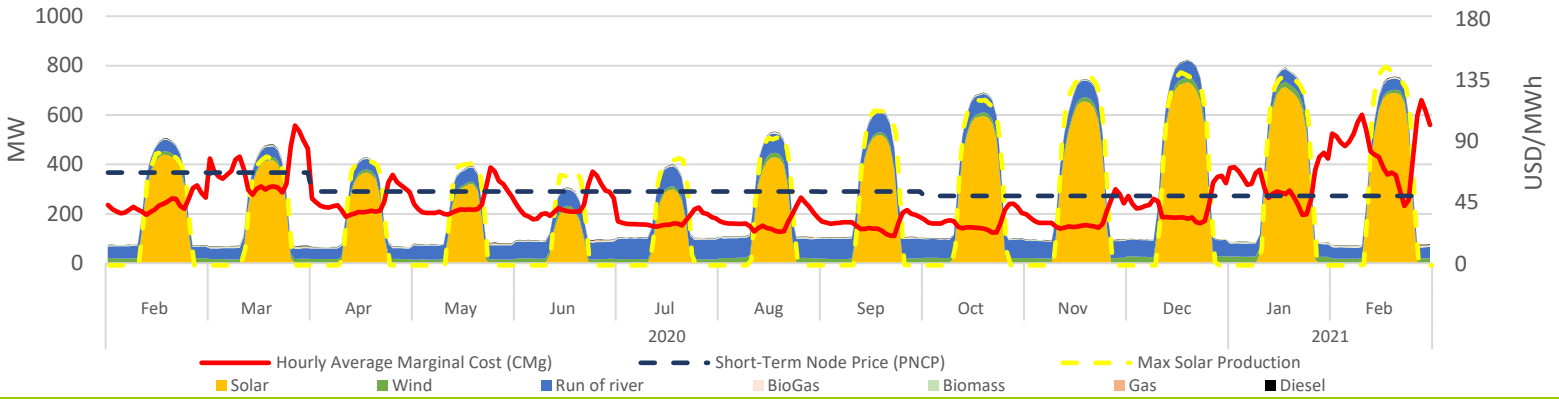
Solar PMG/D Operating Projects Market Share [7]



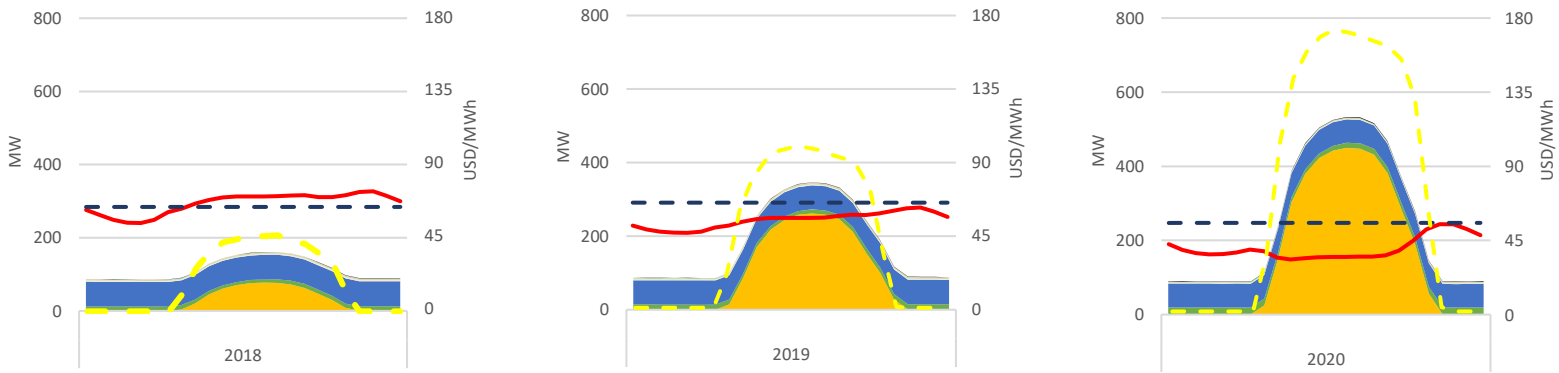
¹ NCRE: Non Conventional Renewable Energy.
² Installed Capacity, CNE Feb 2021.
³ SEN's operation reports, CEN Feb 2021.
⁴ Projects under construction, CNE Feb 2021.

⁵ Projects approved during Feb-2021, SEIA.
⁶ Projects Currently being Evaluated, Feb-2021, SEIA.
⁷ Based on public information.

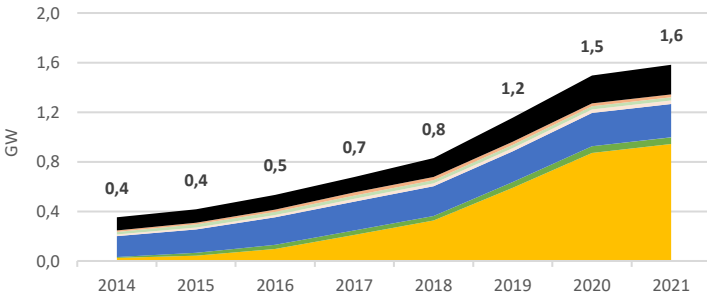
PMG/D Daily Hourly Average Production and Alto Jahuel's Prices



PMG/D Daily Hourly Average Production and Alto Jahuel's Prices

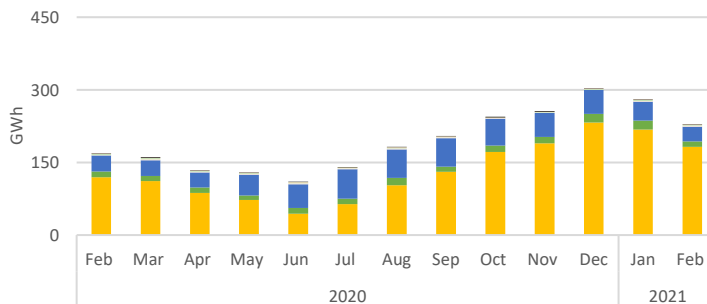


Installed Capacity by Technology



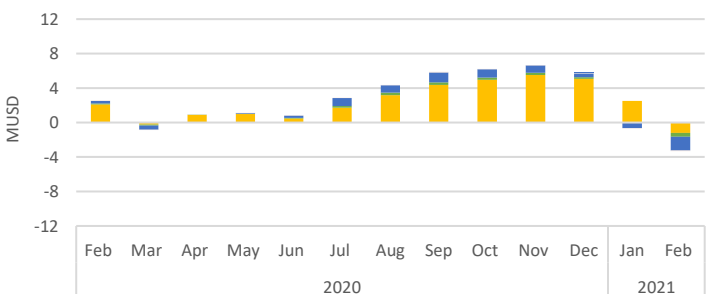
Technology MW	Feb-19	Jan-21	Feb-21	Feb-21 - Jan-21 Var. %
Solar	638	823	876	6%
Wind	44	53	53	0%
Run of river	248	274	270	-1%
Biomass	26	27	27	0%
BioGas	28	22	22	0%
Gas	25	25	25	0%
Diesel	200	227	227	0%
Total	1.209	1.450	1.499	3%

Generation by Technology



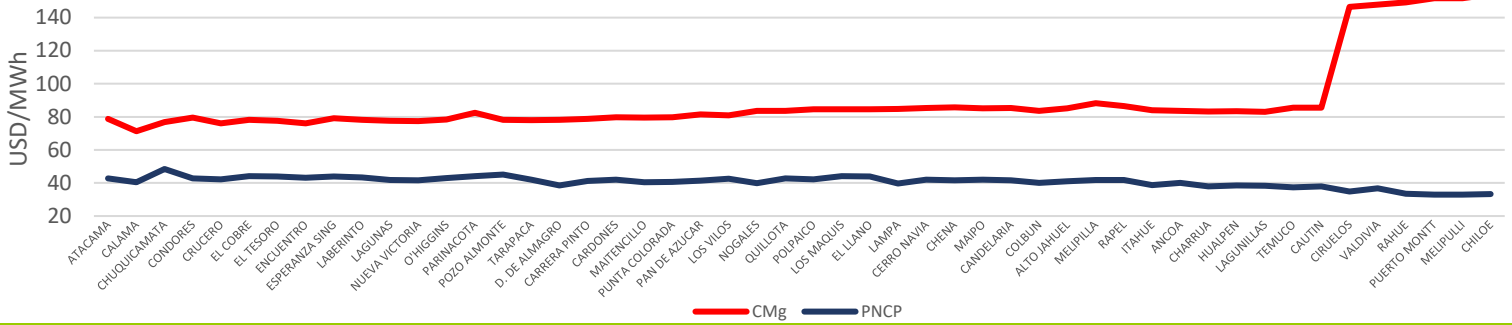
Technology GWh	Feb-19	Jan-21	Feb-21	Feb-21 - Jan-21 Var. %
Solar	129	229	217	-5%
Wind	12	18	11	-40%
Run of river	58	71	54	-24%
Biomass	7	9	9	3%
BioGas	1	2	2	12%
Gas	1	2	1	-12%
Diesel	1	1	2	258%
Total	209	332	296	-11%

Stabilized Price Mechanism Cost

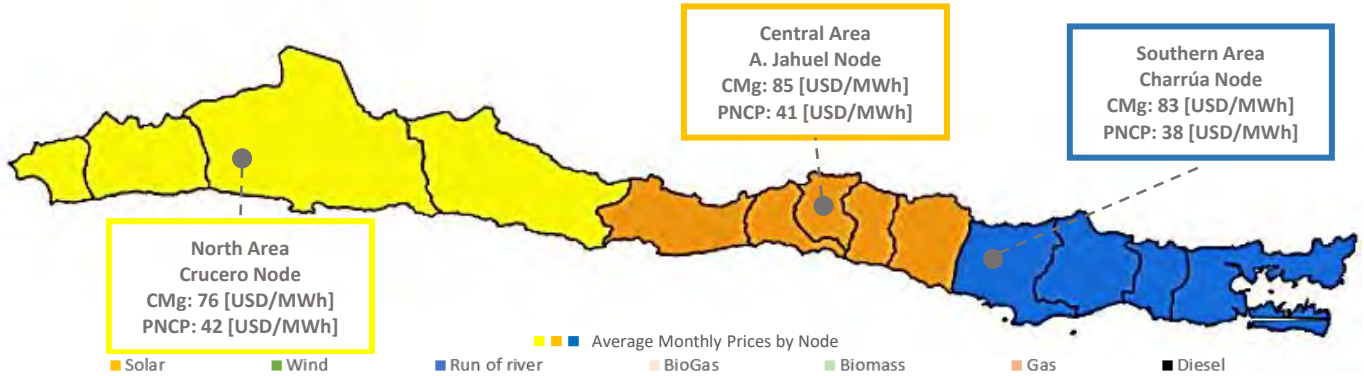


Technology kUSD	Feb-19	Jan-21	Feb-21	Feb-21 - Jan-21 Var. %
Solar	2.108	2.494	-1.209	-148%
Wind	93	-61	-451	-637%
Run of river	292	-576	-1.595	-177%
Biomass	0	0	0	0%
BioGas	18	-7	-47	-547%
Gas	0	0	0	0%
Diesel	0	0	0	0%
Total	2.510	1.850	-3.302	-278%

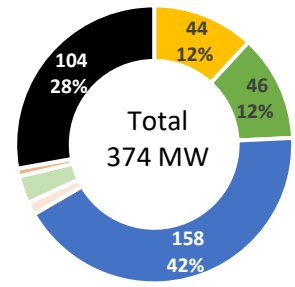
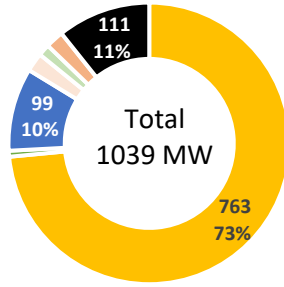
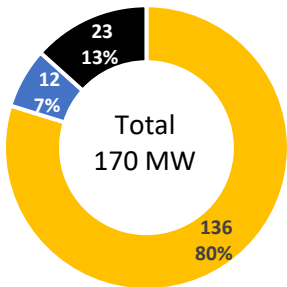
Average Monthly Prices by Node



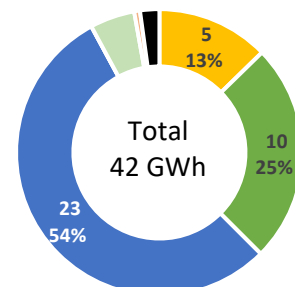
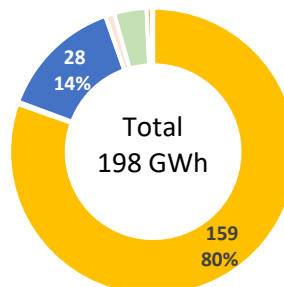
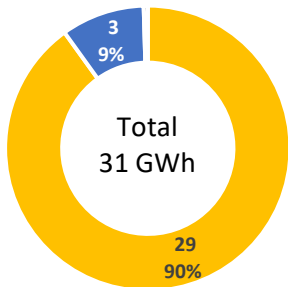
SEN's February - 2021 Average Prices by Node and Geographic Area



PMG/D Installed Capacity by Geographic Area



PMG/D Generation by Geographic Area



PMG/D Stabilized Price Mechanism Cost by Geographic Area

