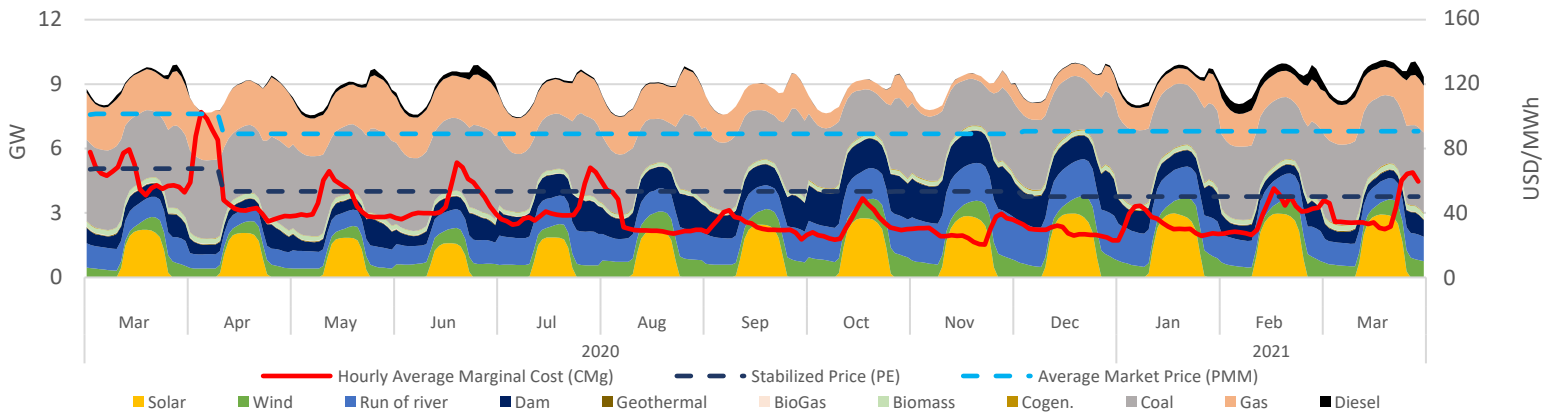


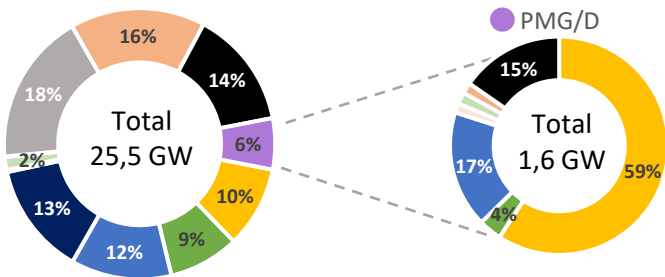
Executive Summary & Highlights

During December, SEN's installed capacity was 25.522 MW, producing a total of 6,88 TWh, where NCRE technologies represented an 23% of the produced energy (1,56 TWh). It is expected that an additional 8.829 MW come into operation between March 2021 and February March, of which 95% are NCRE plants (see "Summary Table - Projects Status"). Regarding the PMG/D segment, which represents 6% (1,6 GW) of SEN's installed capacity, and 4% (0,27 TWh) of the injected energy in the system, where solar stands out with 72% of the generation (196 GWh), followed by hydro with 20% (54 GWh) and wind representing 4% (11 GWh). Finally, the stabilized price mechanism cost above marginal price meant a systemic cost of MMUSD -2,7; cost that was distributed among Solar, Hydraulic and Wind generation plants as -1,6; -0,6 and -0,4 MMUSD respectively.

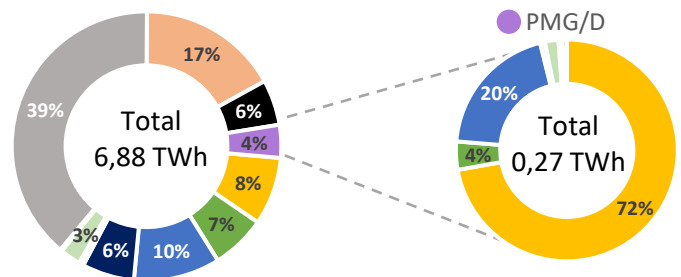
SEN Daily Hourly Average Technology Mix Production, and Alto Jahuel's Prices



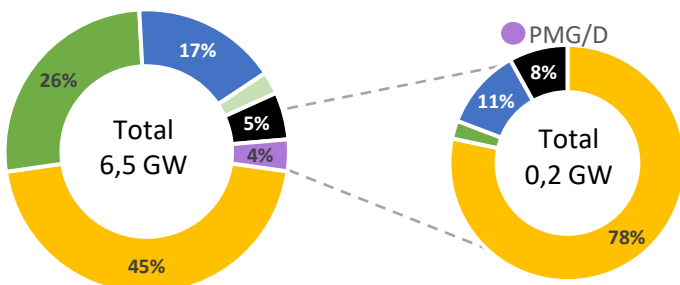
SEN's Installed Capacity [2]



SEN's Generation [3]



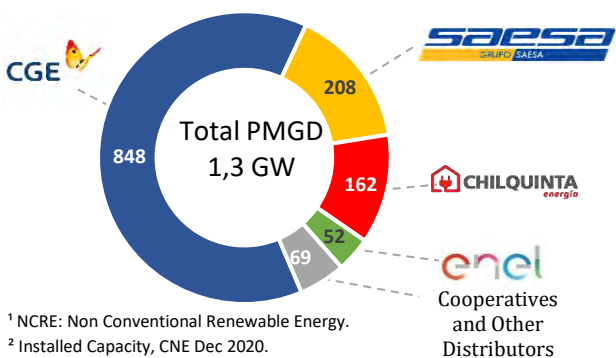
Projects Under Construction [4]



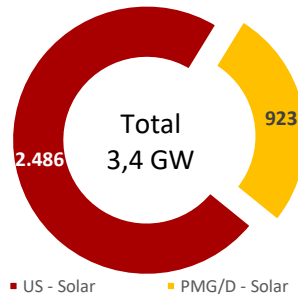
Summary Table – Project Status

Technology MW	Commissioning		Environmental	
	Stage [2]	Under Construction	Approved [5]	Undergoing [6]
Solar	71	3.147	430	1.235
Wind	136	1.728	0	409
Run of river	1	1.102	0	0
Geotérmica	0	0	0	0
Biomass	3	166	0	0
BioGas	3	0	0	0
Gas	26	0	0	0
Diesel	4	370	0	0
Total	244	6.512	430	1.644

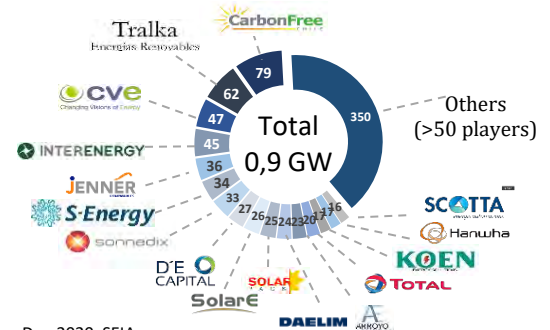
PMGD Installed Capacity by Distributor [7]



Solar Installed Capacity [2]



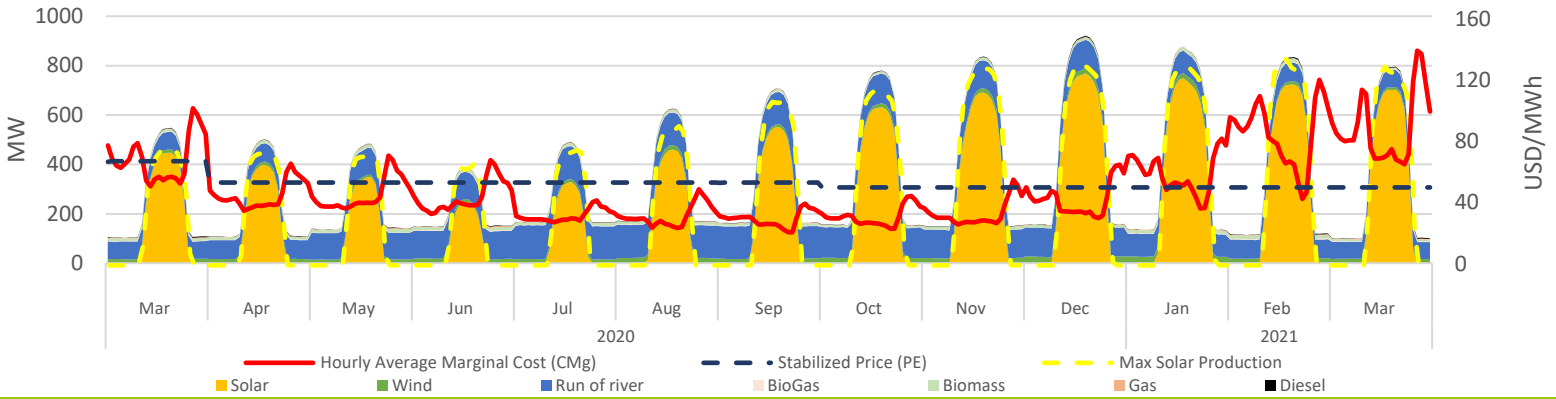
Solar PMG/D Operating Projects Market Share [7]



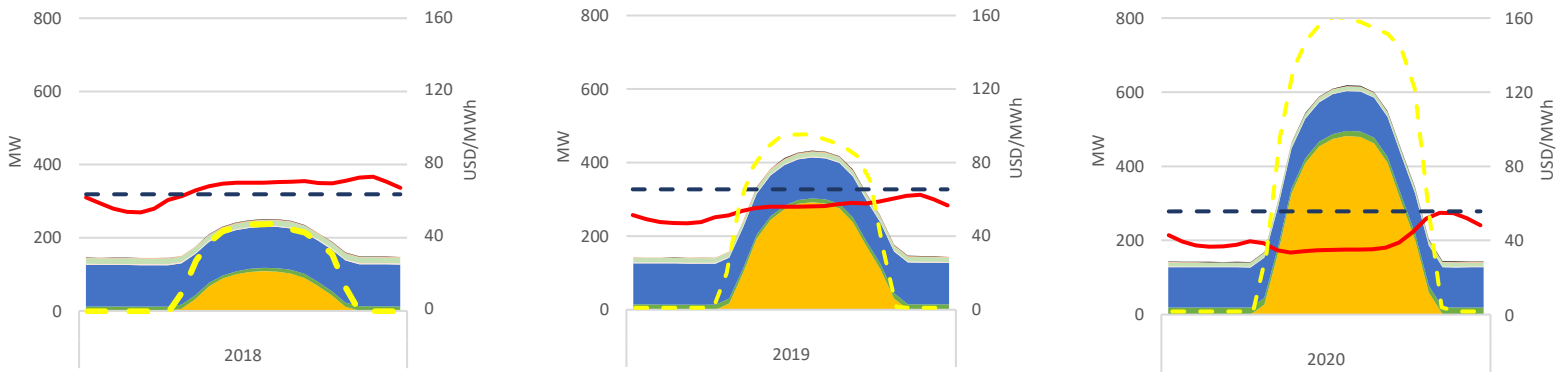
¹ NCRE: Non Conventional Renewable Energy.
² Installed Capacity, CNE Dec 2020.
³ SEN's operation reports, CEN Dec 2020.
⁴ Projects under construction, CNE Dec 2020.

⁵ Projects approved during Dec-2020, SEIA.
⁶ Projects Currently being Evaluated, Dec-2020, SEIA.
⁷ Based on public information.

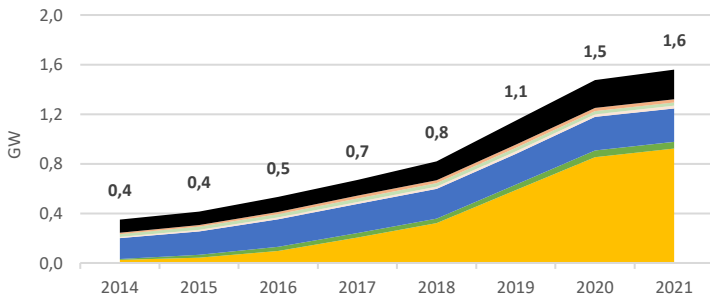
PMG/D Daily Hourly Average Production and Alto Jahuel's Prices



PMG/D Daily Hourly Average Production and Alto Jahuel's Prices

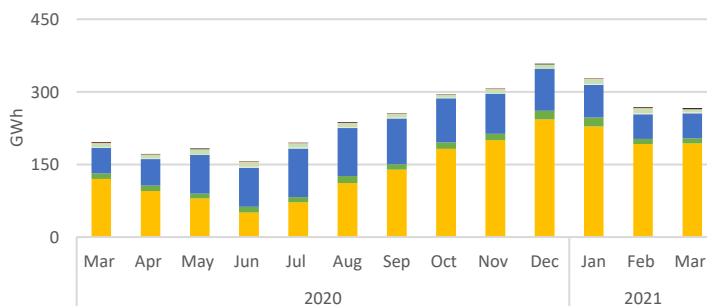


Installed Capacity by Technology



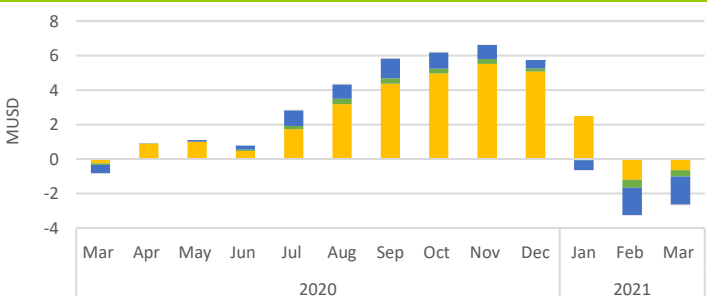
Technology MW	Mar-19	Feb-21	Mar-21	Mar-21 - Feb-21 Var. %
Solar	652	876	923	5%
Wind	44	53	53	0%
Run of river	249	270	270	0%
Biomass	27	27	27	0%
BioGas	22	22	22	0%
Gas	25	25	25	0%
Diesel	201	227	239	6%
Total	1.220	1.499	1.559	4%

Generation by Technology



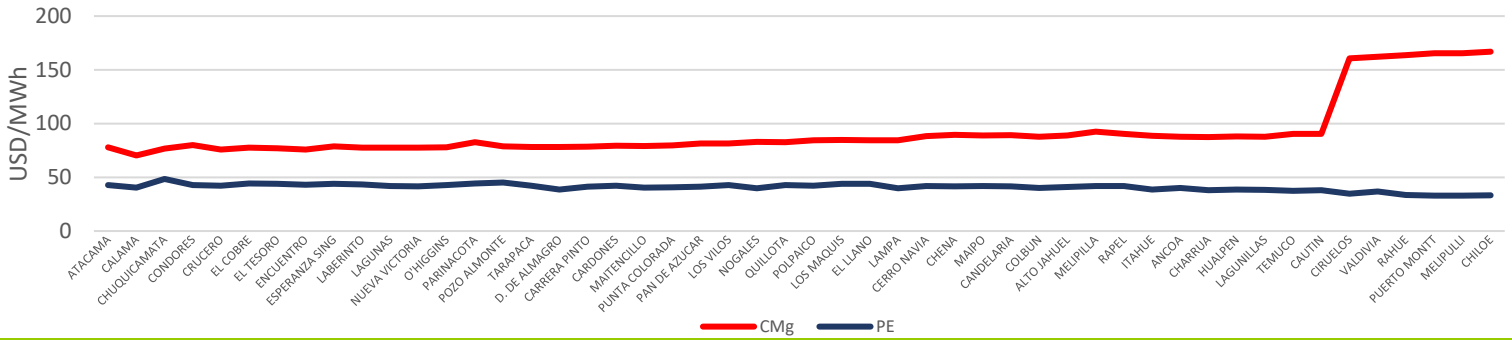
Technology GWh	Mar-19	Feb-21	Mar-21	Mar-21 - Feb-21 Var. %
Solar	122	217	196	2%
Wind	11	11	11	2%
Run of river	55	54	54	-1%
Biomass	7	9	5	-43%
BioGas	2	2	2	-6%
Gas	2	1	2	10%
Diesel	1	2	2	-2%
Total	201	296	271	0%

Stabilized Price Mechanism Cost

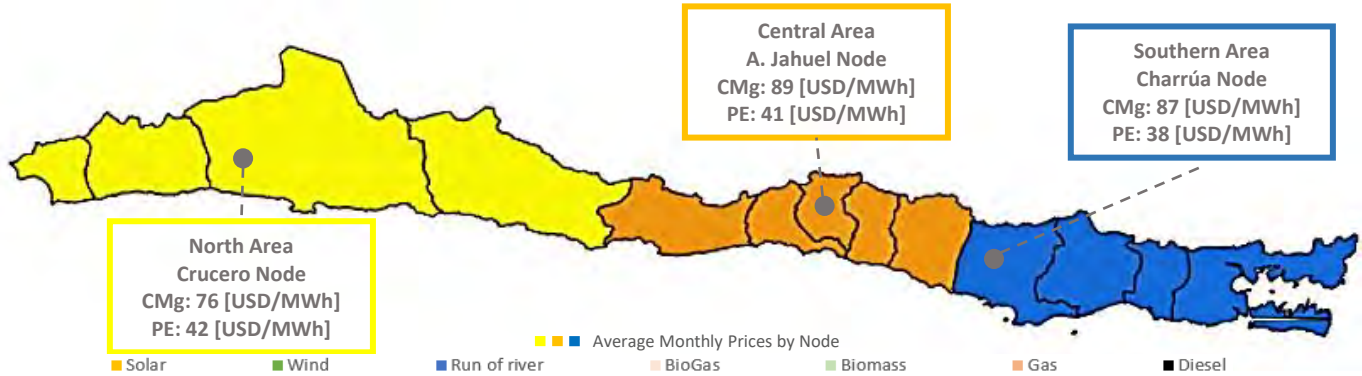


Technology kUSD	Mar-19	Feb-21	Mar-21	Mar-21 - Feb-21 Var. %
Solar	-256	-1.209	-635	47%
Wind	-98	-451	-373	17%
Run of river	-473	-1.595	-1.633	-2%
Biomass	0	0	0	0%
BioGas	-27	-47	-59	-26%
Gas	0	0	0	0%
Diesel	0	0	0	0%
Total	-854	-3.302	-2.701	18%

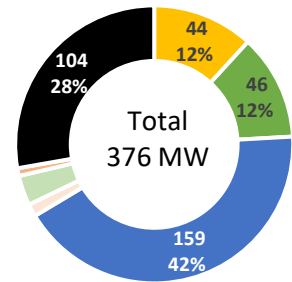
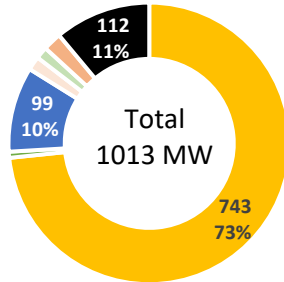
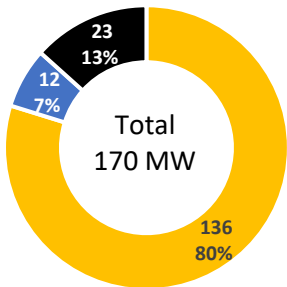
Average Monthly Prices by Node



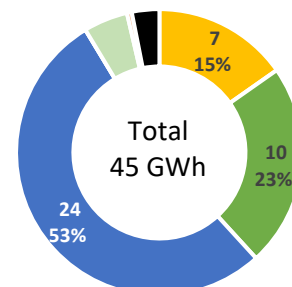
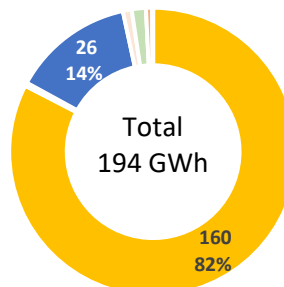
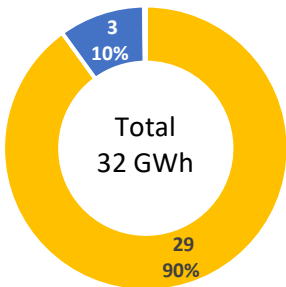
SEN's March - 2021 Average Prices by Node and Geographic Area



PMG/D Installed Capacity by Geographic Area



PMG/D Generation by Geographic Area



PMG/D Stabilized Price Mechanism Cost by Geographic Area

