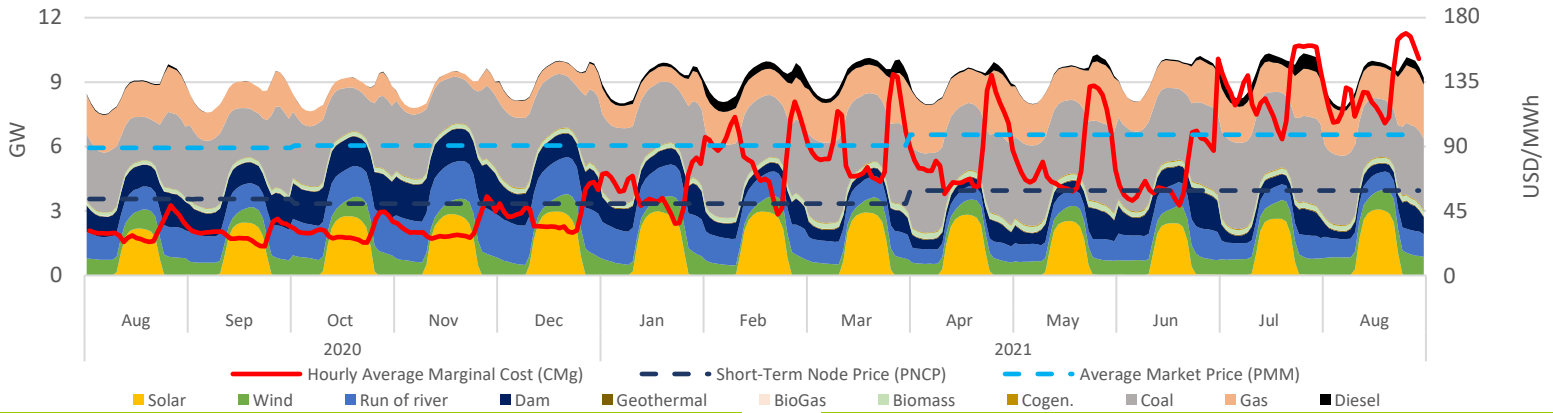


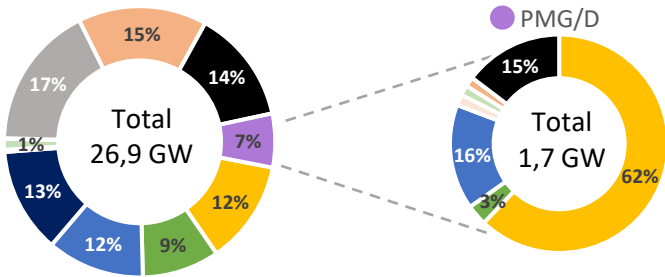
### Executive Summary & Highlights

During August, SEN's installed capacity was 26.935 MW, producing a total of 6,86 TWh, where NCRE technologies represented an 24% of the produced energy (1,64 TWh). It is expected that an additional 6.623 MW come into operation, of which 96% are NCRE plants (see "Summary Table - Projects Status"). Regarding the PMG/D segment, which represents 7% (1,7 GW) of SEN's installed capacity, and 4% (0,26 TWh) of the injected energy in the system, where solar stands out with 57% of the generation (148 GWh), followed by hydro with 32% (82 GWh) and wind representing 5% (14 GWh). Finally, the stabilized price mechanism cost above marginal price meant a systemic benefit of MMUSD 9,4; that was distributed among Solar, Hydraulic and Wind generation plants as 4,5; 3,7 and 1 MMUSD respectively.

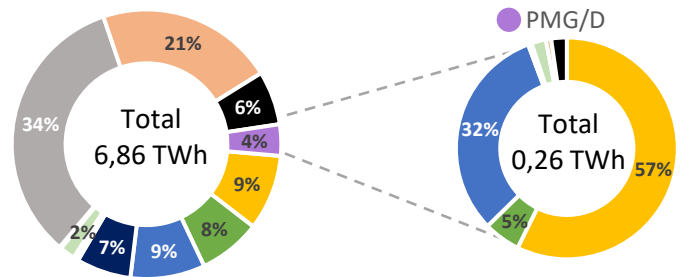
### SEN Daily Hourly Average Technology Mix Production, and Alto Jahuel's Prices



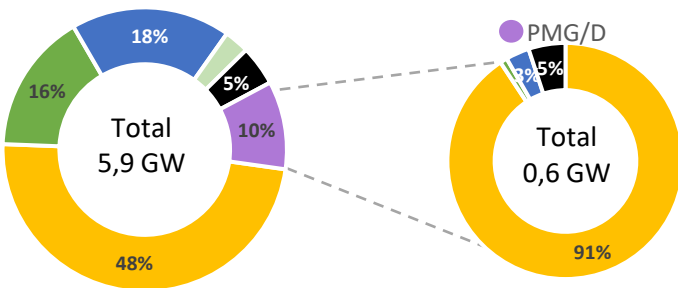
#### SEN's Installed Capacity [2]



#### SEN's Generation [3]



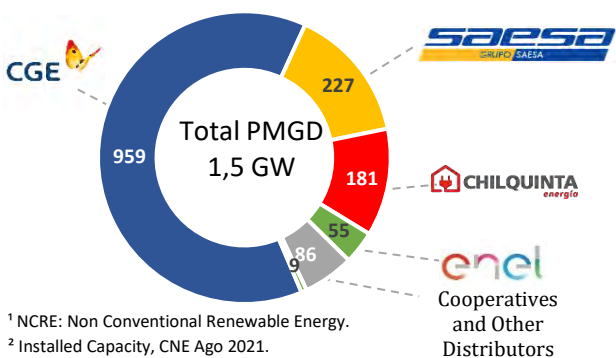
#### Projects Under Construction [4]



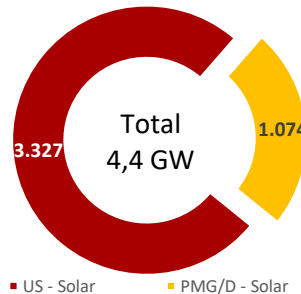
#### Summary Table – Project Status

Technology MW	Commissioning Stage [2]	Under Construction	Environmental Approved [5]	Undergoing [6]
Solar	5	3.374	138	136
Wind	0	946	0	457
Run of river	0	1.086	0	0
Geotérmica	0	0	0	0
Biomass	19	166	0	0
BioGas	0	0	0	0
Gas	0	0	0	0
Diesel	0	297	0	0
<b>Total</b>	<b>24</b>	<b>5.869</b>	<b>138</b>	<b>593</b>

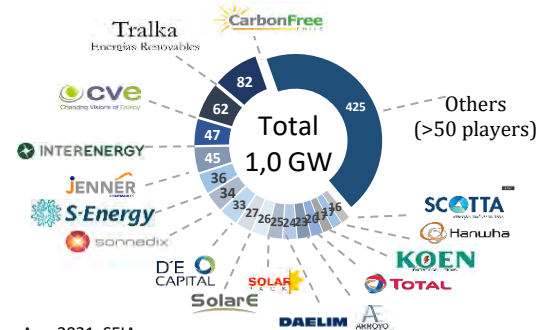
#### PMGD Installed Capacity by Distributor [7]



#### Solar Installed Capacity [2]



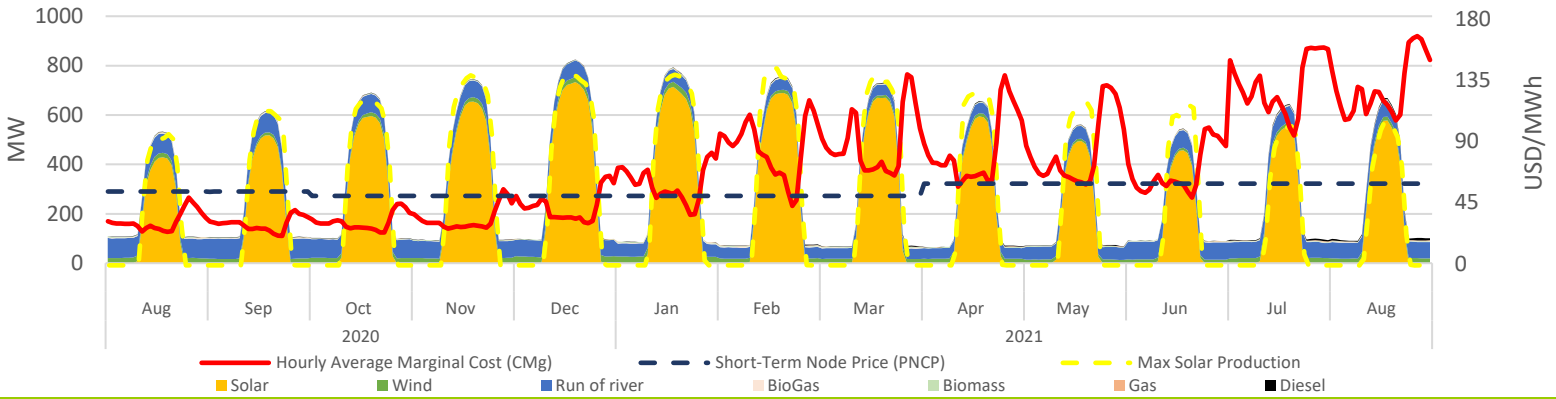
#### Solar PMG/D Operating Projects Market Share [7]



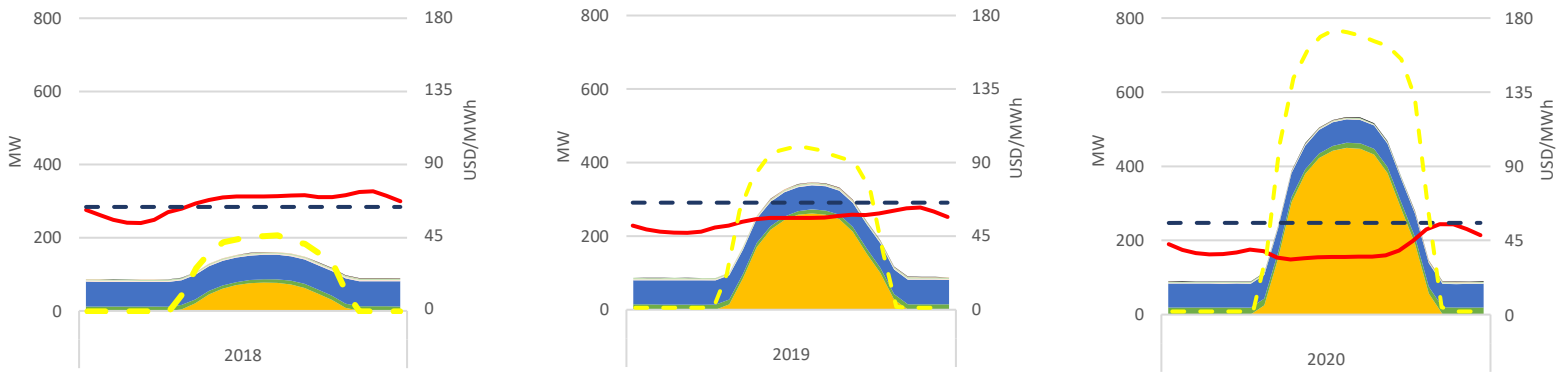
<sup>1</sup> NCRE: Non Conventional Renewable Energy.  
<sup>2</sup> Installed Capacity, CNE Ago 2021.  
<sup>3</sup> SEN's operation reports, CEN Ago 2021.  
<sup>4</sup> Projects under construction, CNE Ago 2021.

<sup>5</sup> Projects approved during Ago-2021, SEIA.  
<sup>6</sup> Projects Currently being Evaluated, Ago-2021, SEIA.  
<sup>7</sup> Based on public information.

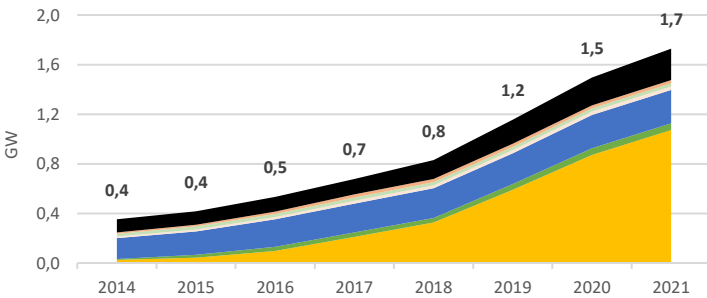
### PMG/D Daily Hourly Average Production and Alto Jahuel's Prices



### PMG/D Daily Hourly Average Production and Alto Jahuel's Prices

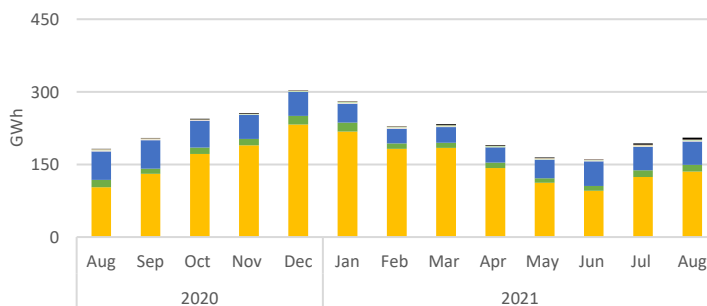


### Installed Capacity by Technology



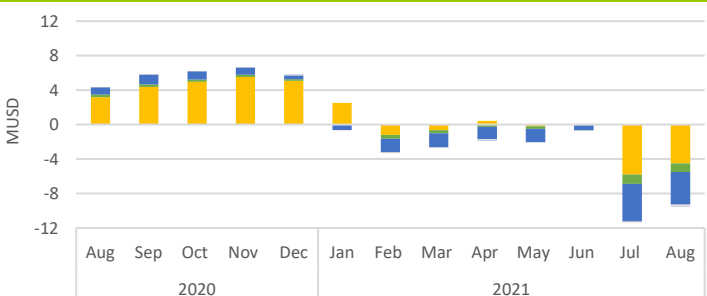
Technology MW	Aug-19	Jul-21	Aug-21	Aug-21 - Jul-21 Var. %
Solar	803	1,046	1,074	3%
Wind	53	62	53	-14%
Run of river	268	279	269	-3%
Biomass	26	26	26	0%
BioGas	28	24	28	16%
Gas	25	25	25	0%
Diesel	209	260	254	-2%
<b>Total</b>	<b>1,413</b>	<b>1,723</b>	<b>1,728</b>	<b>0%</b>

### Generation by Technology



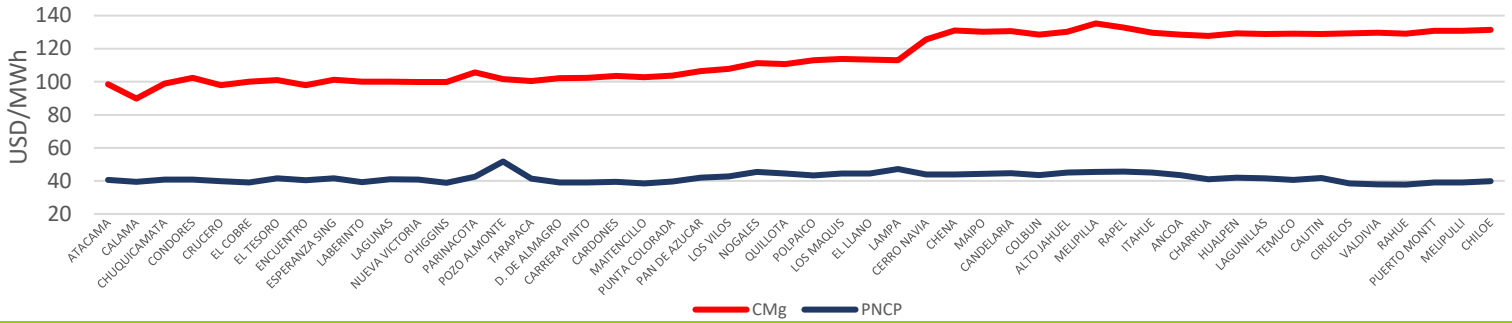
Technology GWh	Aug-19	Jul-21	Aug-21	Aug-21 - Jul-21 Var. %
Solar	113	133	148	12%
Wind	15	17	14	-2%
Run of river	100	89	82	-7%
Biomass	7	4	5	54%
BioGas	2	1	1	-6%
Gas	2	2	2	-2%
Diesel	1	4	6	51%
<b>Total</b>	<b>240</b>	<b>250</b>	<b>258</b>	<b>5%</b>

### Stabilized Price Mechanism Cost

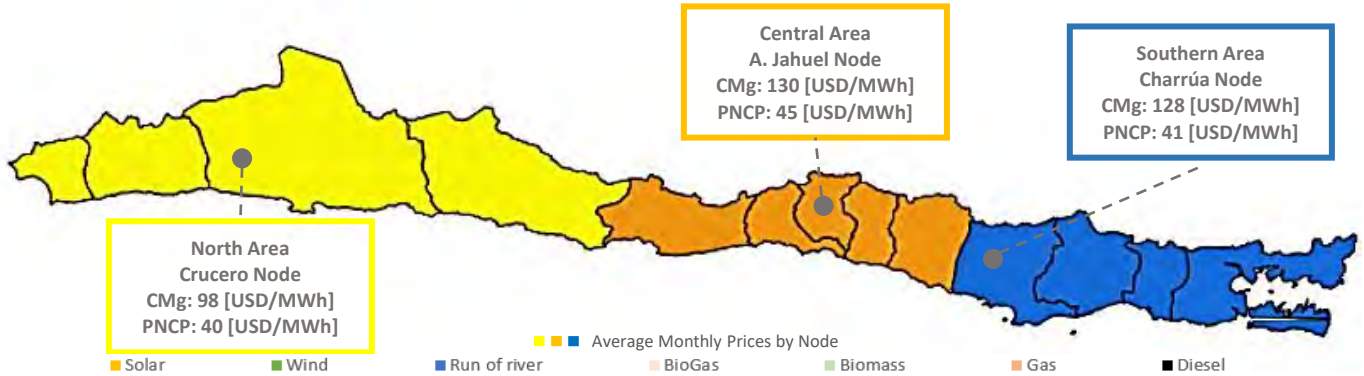


Technology kUSD	Aug-19	Jul-21	Aug-21	Aug-21 - Jul-21 Var. %
Solar	3,177	-5,814	-4,524	22%
Wind	315	-1,088	-999	8%
Run of river	841	-4,378	-3,769	14%
Biomass	0	0	0	0%
BioGas	48	-149	-144	3%
Gas	0	0	0	0%
Diesel	0	0	0	0%
<b>Total</b>	<b>4,381</b>	<b>-11,428</b>	<b>-9,437</b>	<b>0%</b>

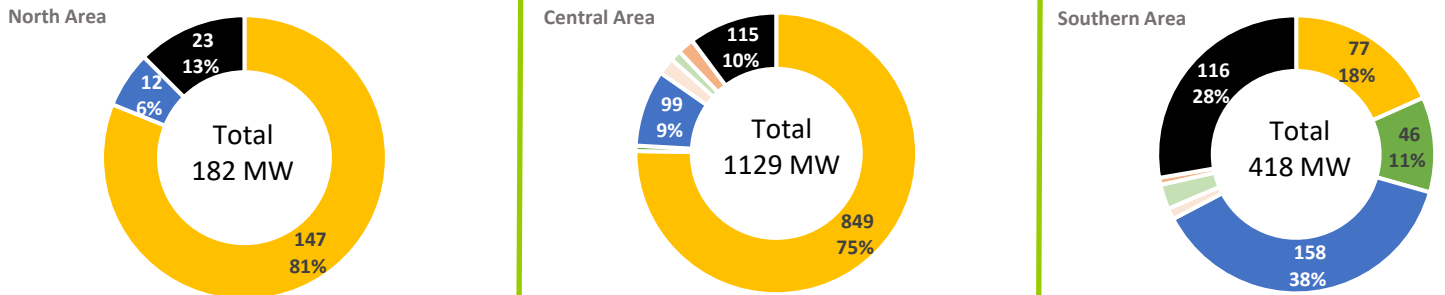
## Average Monthly Prices by Node



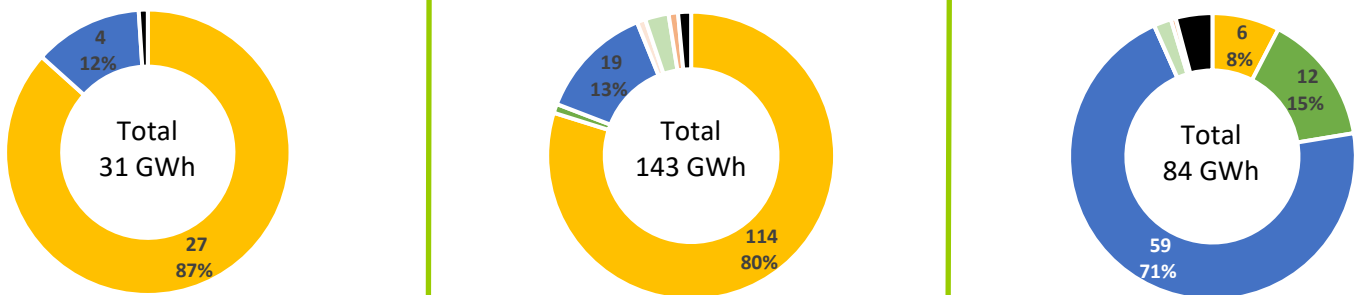
## SEN's August - 2021 Average Prices by Node and Geographic Area



## PMG/D Installed Capacity by Geographic Area



## PMG/D Generation by Geographic Area



## PMG/D Stabilized Price Mechanism Cost by Geographic Area

