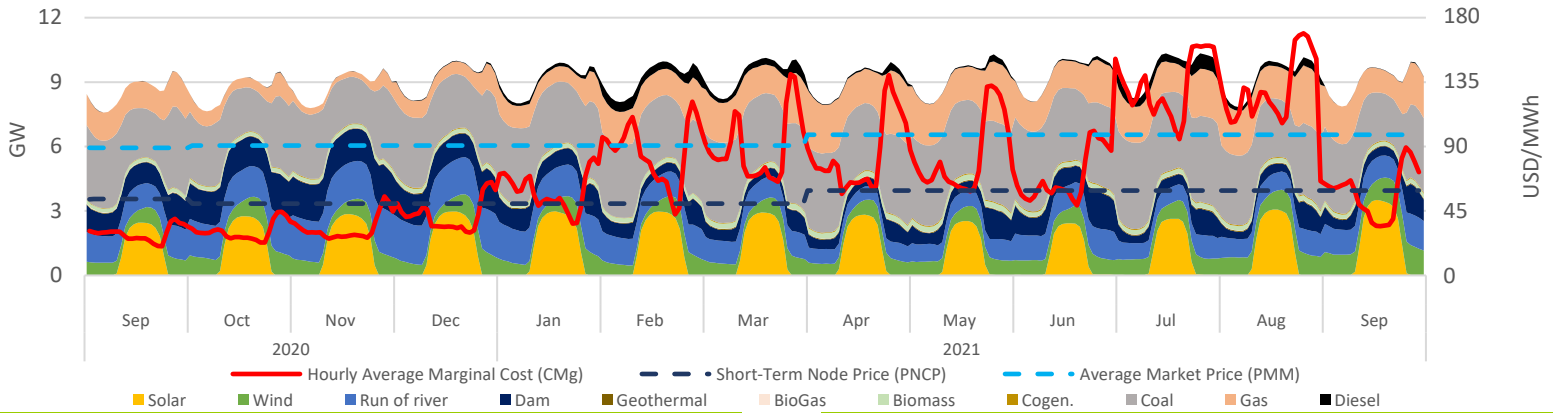


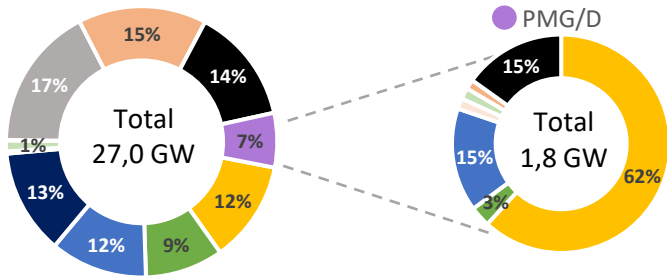
Executive Summary & Highlights

During Sep, SEN's installed capacity was 27.009 MW, producing a total of 6,31 TWh, where NCRE technologies represented an 30% of the produced energy (1,88 TWh). It is expected that an additional 6.327 MW come into operation, of which 94% are NCRE plants (see "Summary Table - Projects Status"). Regarding the PMG/D segment, which represents 7% (1,8 GW) of SEN's installed capacity, and 5% (0,31 TWh) of the injected energy in the system, where solar stands out with 66% of the generation (206 GWh), followed by hydro with 28% (87 GWh) and wind representing 4% (11 GWh). Finally, the stabilized price mechanism cost above marginal price meant a systemic cost of MMUSD 3,8; that was distributed among Solar, Hydraulic and Wind generation plants as 3,8; -0,5 and -0,01 MMUSD respectively.

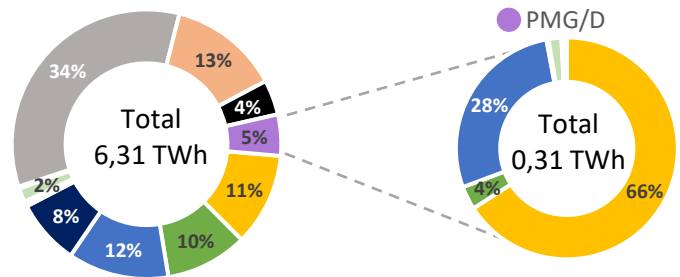
SEN Daily Hourly Average Technology Mix Production, and Alto Jahuel's Prices



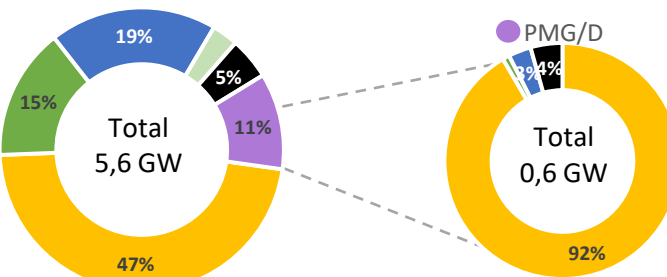
SEN's Installed Capacity [2]



SEN's Generation [3]



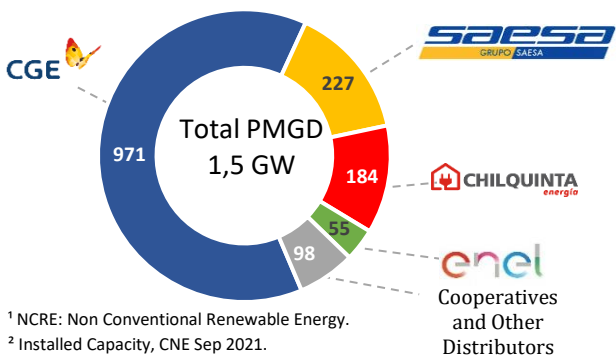
Projects Under Construction [4]



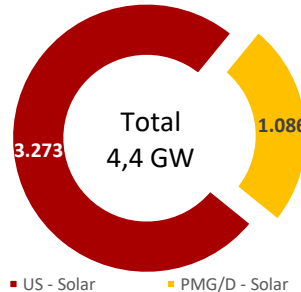
Summary Table – Project Status

Technology MW	Commissioning Stage [2]	Under Construction	Environmental Approved [5]	Environmental Undergoing [6]
Solar	111	3.199	99	57
Wind	0	846	198	192
Run of river	0	1.086	0	0
Geotérmica	0	0	0	0
Biomass	3	166	0	0
BioGas	0	0	0	0
Gas	0	0	0	0
Diesel	76	294	0	0
Total	190	5.591	297	249

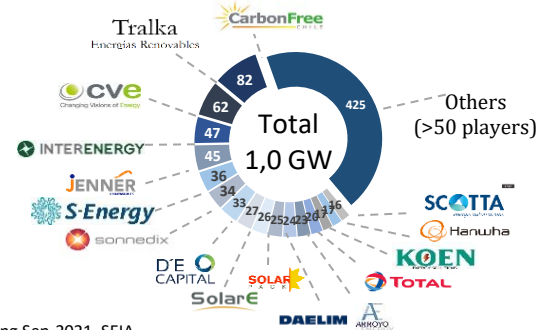
PMGD Installed Capacity by Distributor [7]



Solar Installed Capacity [2]



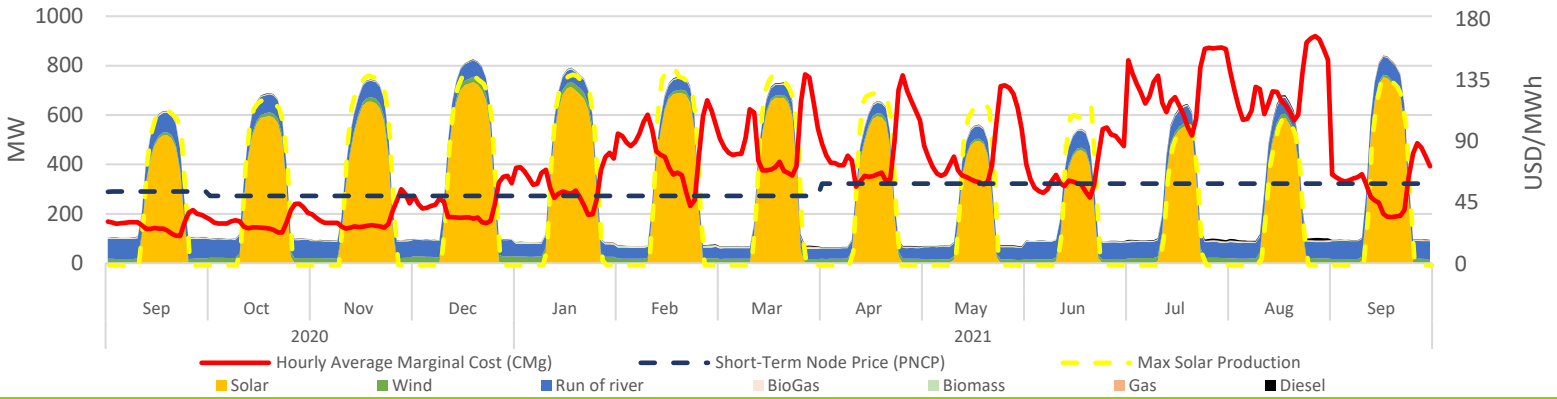
Solar PMG/D Operating Projects Market Share [7]



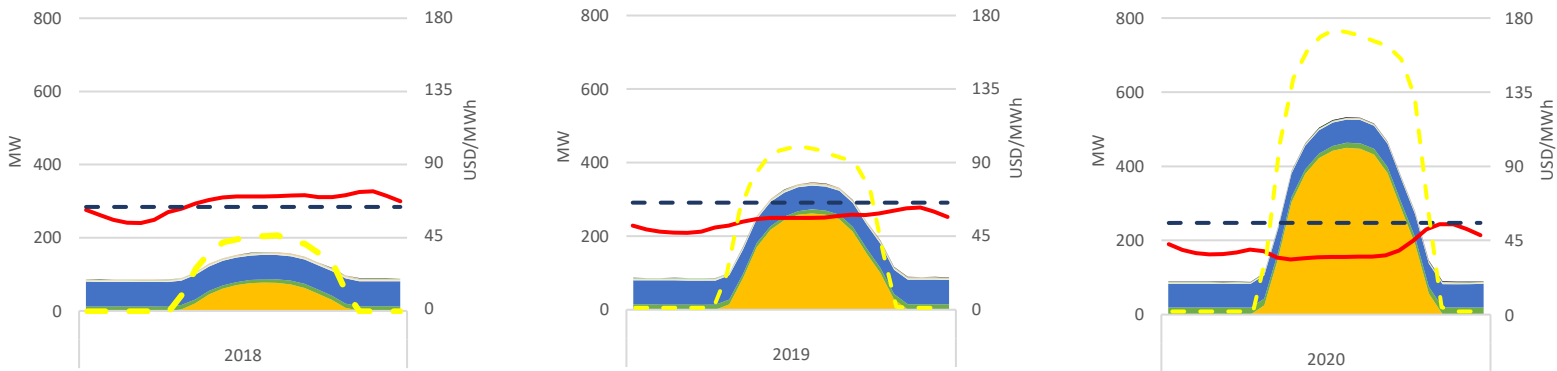
¹ NCRE: Non Conventional Renewable Energy.
² Installed Capacity, CNE Sep 2021.
³ SEN's operation reports, CEN Sep 2021.
⁴ Projects under construction, CNE Sep 2021.

⁵ Projects approved during Sep-2021, SEIA.
⁶ Projects Currently being Evaluated, Sep-2021, SEIA.
⁷ Based on public information.

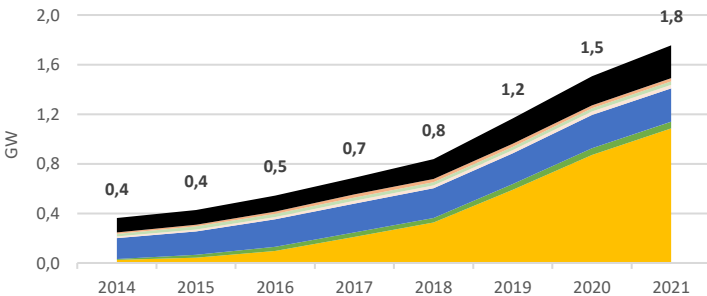
PMG/D Daily Hourly Average Production and Alto Jahuel's Prices



PMG/D Daily Hourly Average Production and Alto Jahuel's Prices

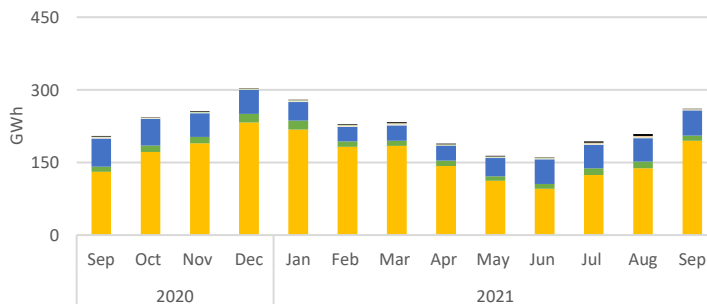


Installed Capacity by Technology



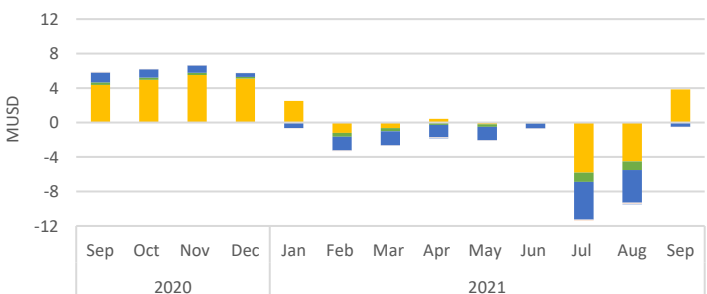
Technology MW	Sep-19	Aug-21	Sep-21	Sep-21 - Aug-21 Var. %
Solar	803	1,074	1,086	1%
Wind	53	53	53	1%
Run of river	268	269	269	0%
Biomass	26	26	29	12%
BioGas	28	28	28	-1%
Gas	25	25	25	0%
Diesel	218	254	266	5%
Total	1,422	1,728	1,755	2%

Generation by Technology



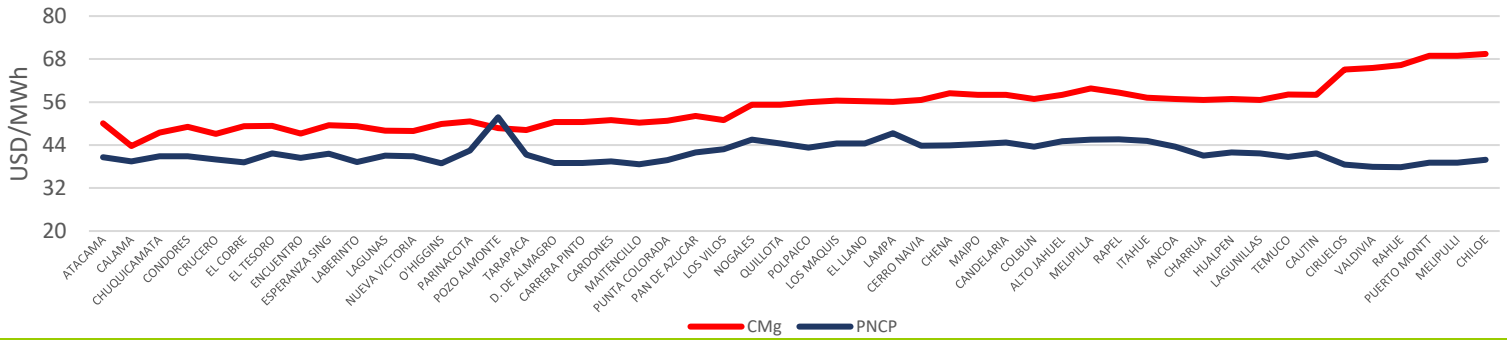
Technology GWh	Sep-19	Aug-21	Sep-21	Sep-21 - Aug-21 Var. %
Solar	141	148	206	39%
Wind	11	14	11	-23%
Run of river	96	82	87	6%
Biomass	7	5	6	8%
BioGas	2	1	1	-32%
Gas	1	2	1	-36%
Diesel	1	6	1	-81%
Total	258	258	313	21%

Stabilized Price Mechanism Cost

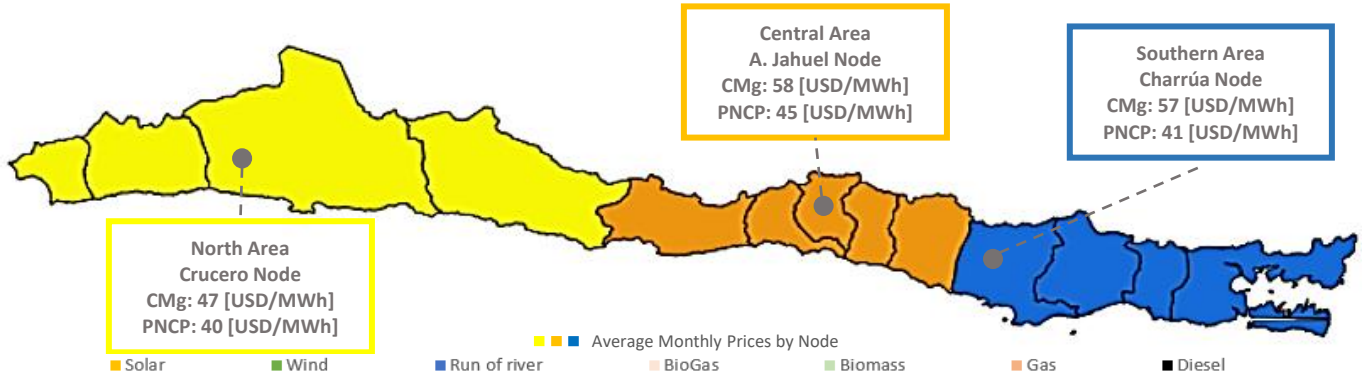


Technology kUSD	Sep-19	Aug-21	Sep-21	Sep-21 - Aug-21 Var. %
Solar	4,376	-4,524	3,845	185%
Wind	301	-999	-7	99%
Run of river	1,154	-3,769	-475	87%
Biomass	0	0	0	0%
BioGas	50	-144	-10	93%
Gas	0	0	0	0%
Diesel	0	0	0	0%
Total	5,881	-9,437	3,353	136%

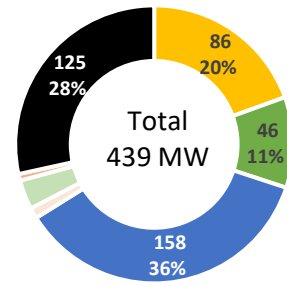
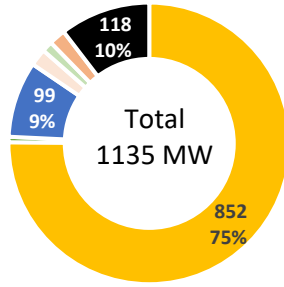
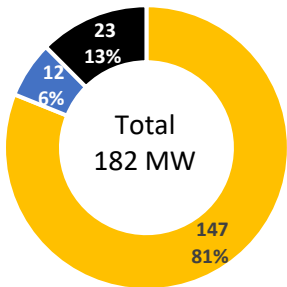
Average Monthly Prices by Node



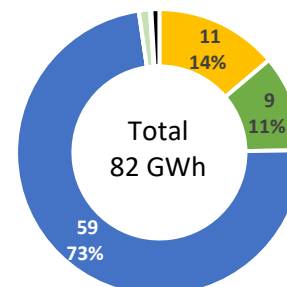
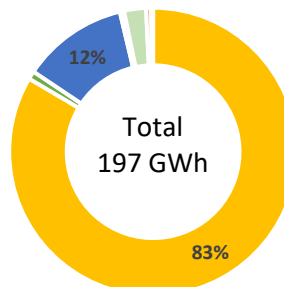
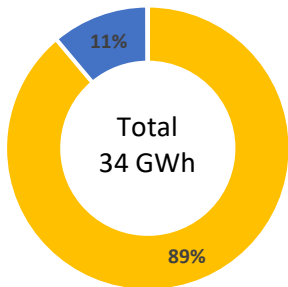
SEN's September - 2021 Average Prices by Node and Geographic Area



PMG/D Installed Capacity by Geographic Area



PMG/D Generation by Geographic Area



PMG/D Stabilized Price Mechanism Cost by Geographic Area

