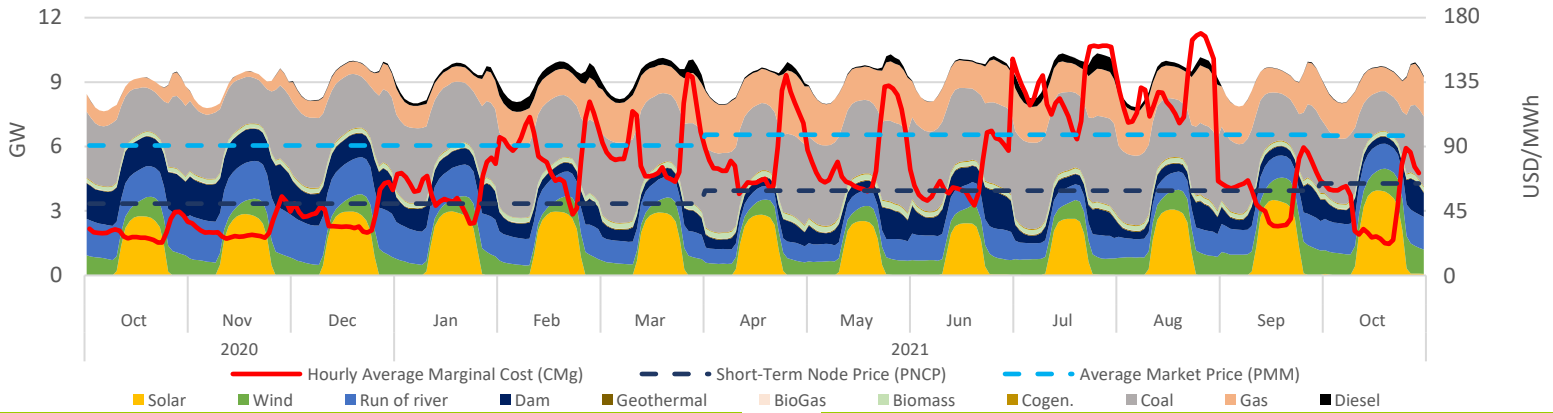


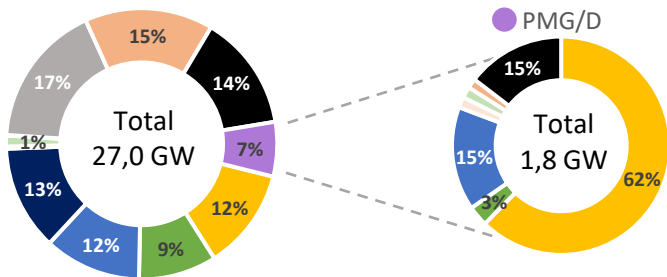
Executive Summary & Highlights

During oct, SEN's installed capacity was 27.019 MW, producing a total of 6,63 TWh, where NCRE technologies represented an 33% of the produced energy (2,2 TWh). It is expected that an additional 6.826 MW come into operation, of which 95% are NCRE plants (see "Summary Table - Projects Status"). Regarding the PMG/D segment, which represents 7% (1,8 GW) of SEN's installed capacity, and 6% (0,41 TWh) of the injected energy in the system, where solar stands out with 69% of the generation (278 GWh), followed by hydro with 24% (95 GWh) and wind representing 5% (21 GWh). Finally, the stabilized price mechanism cost above marginal price meant a systemic cost of MMUSD 6,4; that was distributed among Solar, Hydraulic and Wind generation plants as 7,0; -0,7 and -0,04 MMUSD respectively.

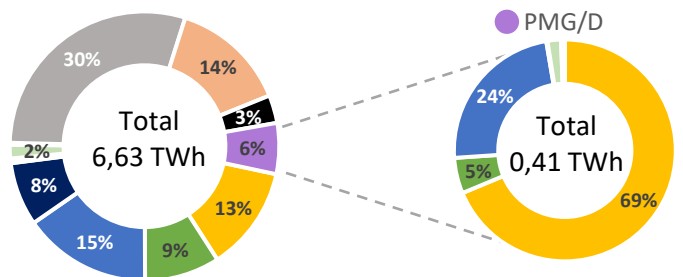
SEN Daily Hourly Average Technology Mix Production, and Alto Jahuel's Prices



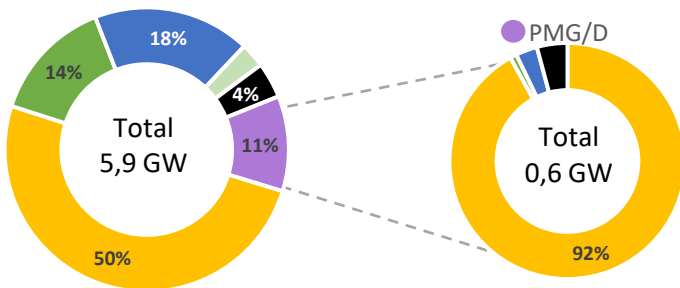
SEN's Installed Capacity [2]



SEN's Generation [3]



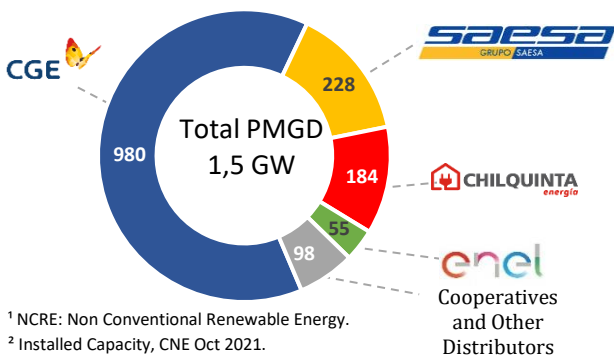
Projects Under Construction [4]



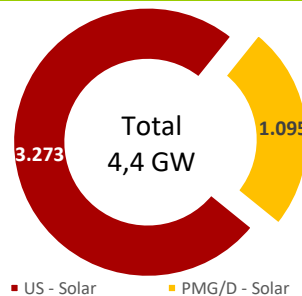
Summary Table – Project Status

Technology MW	Commissioning		Environmental	
	Stage [2]	Under Construction	Approved [5]	Undergoing [6]
Solar	111	3.579	189	327
Wind	0	846	0	174
Run of river	0	1.086	0	0
Geotérmica	0	0	0	0
Biomass	3	166	0	0
BioGas	0	0	0	0
Gas	0	0	0	0
Diesel	76	269	0	0
Total	190	5.946	189	501

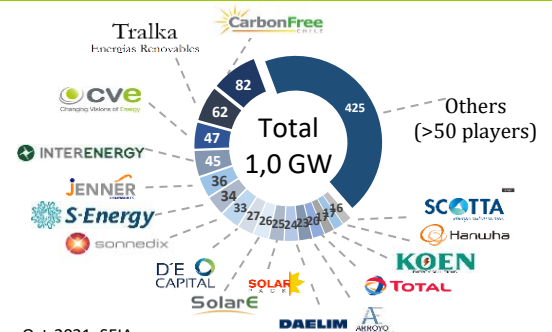
PMGD Installed Capacity by Distributor [7]



Solar Installed Capacity [2]



Solar PMG/D Operating Projects Market Share [7]



¹ NCRE: Non Conventional Renewable Energy.

² Installed Capacity, CNE Oct 2021.

³ SEN's operation reports, CEN Oct 2021.

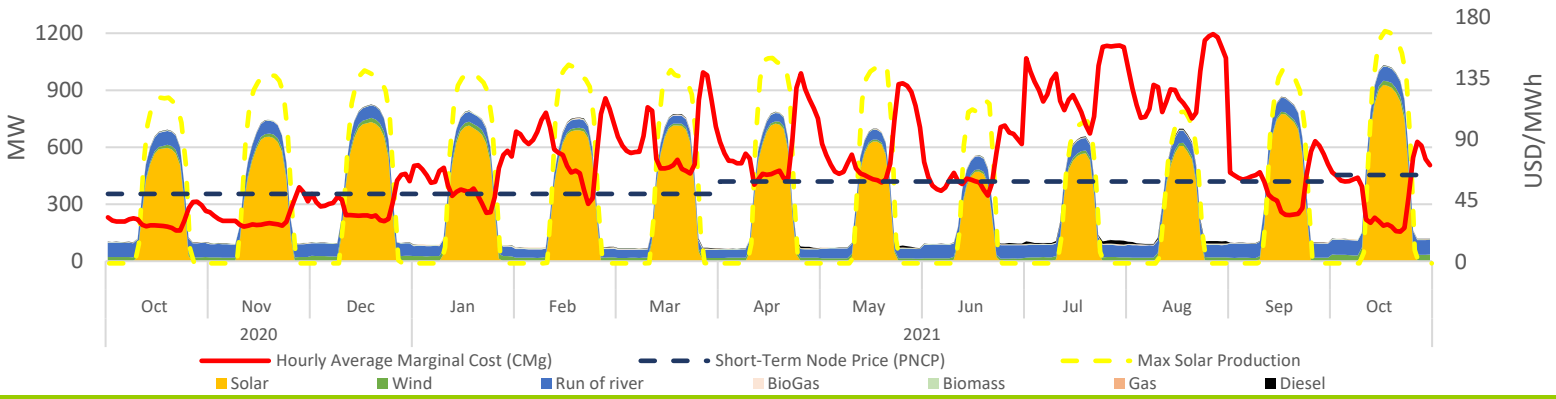
⁴ Projects under construction, CNE Oct 2021.

⁵ Projects approved during Oct-2021, SEIA.

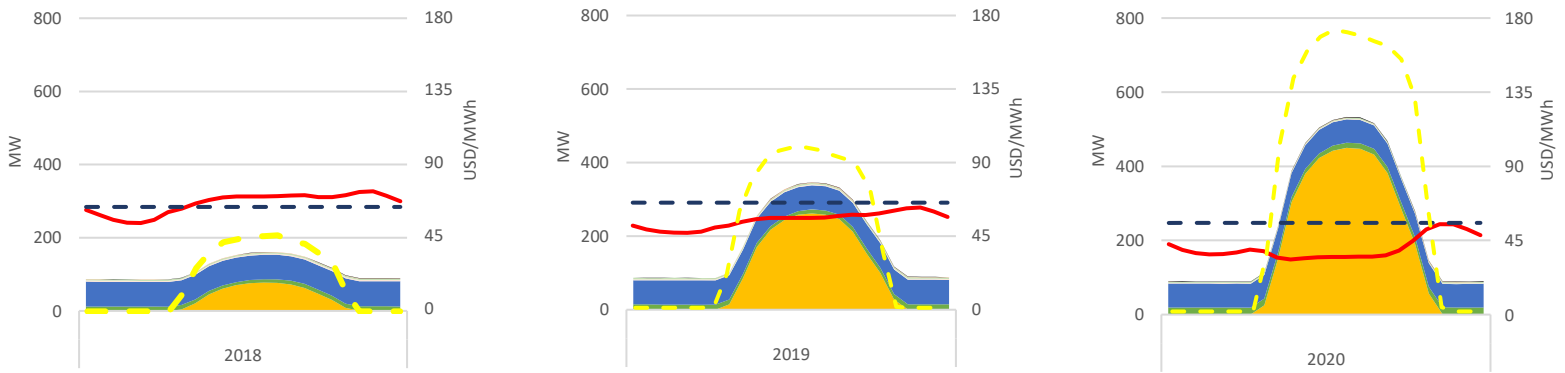
⁶ Projects Currently being Evaluated, Oct-2021, SEIA.

⁷ Based on public information.

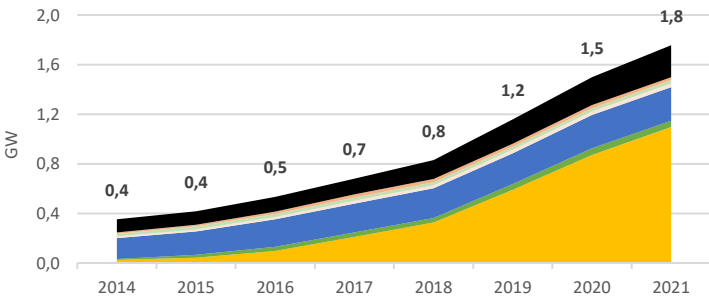
PMG/D Daily Hourly Average Production and Alto Jahuel's Prices



PMG/D Daily Hourly Average Production and Alto Jahuel's Prices

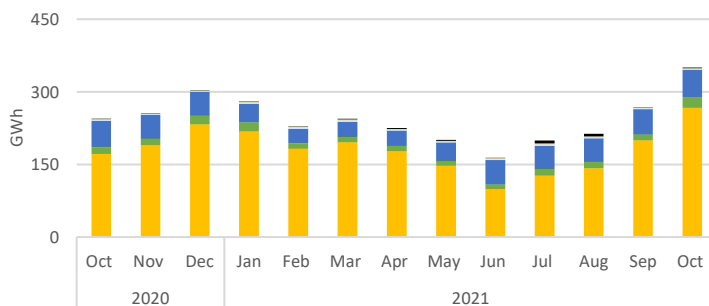


Installed Capacity by Technology



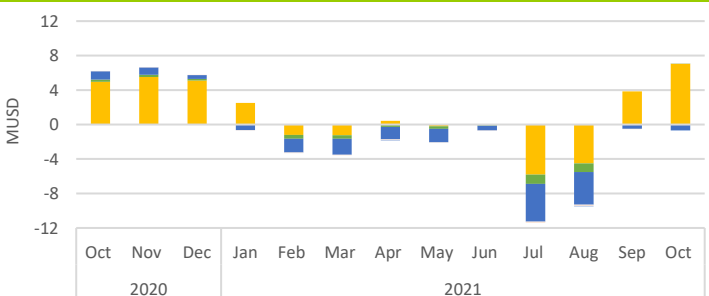
Technology MW	Oct-19	Sep-21	Oct-21	Oct-21 - Sep-21 Var. %
Solar	824	1.086	1.095	1%
Wind	53	53	53	0%
Run of river	269	269	270	0%
Biomass	26	29	29	0%
BioGas	28	28	28	0%
Gas	25	25	25	0%
Diesel	209	266	257	-4%
Total	1.434	1.755	1.756	0%

Generation by Technology



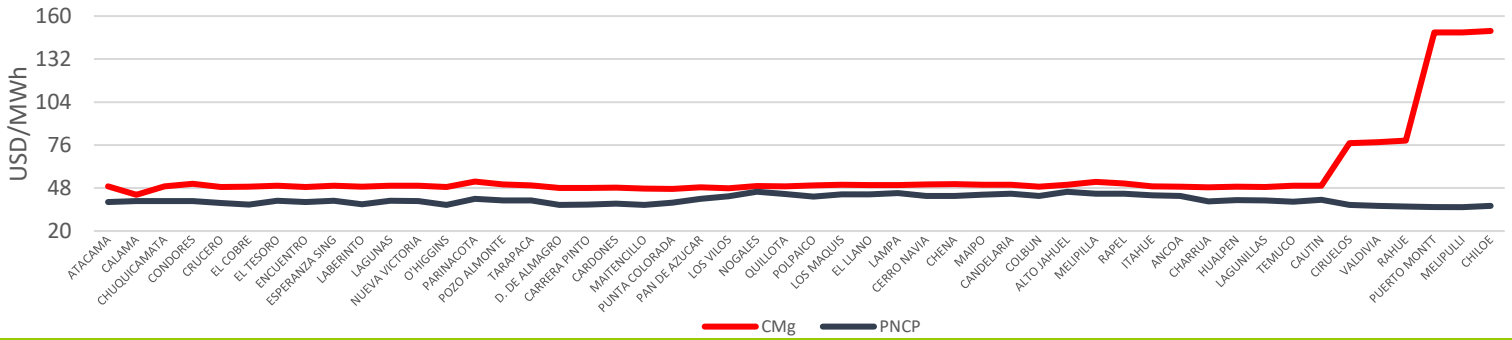
Technology GWh	Oct-19	Sep-21	Oct-21	Oct-21 - Sep-21 Var. %
Solar	183	206	279	35%
Wind	13	11	21	86%
Run of river	92	87	95	9%
Biomass	5	6	8	33%
BioGas	1	1	1	-24%
Gas	1	1	1	-31%
Diesel	1	1	1	16%
Total	297	313	405	29%

Stabilized Price Mechanism Cost

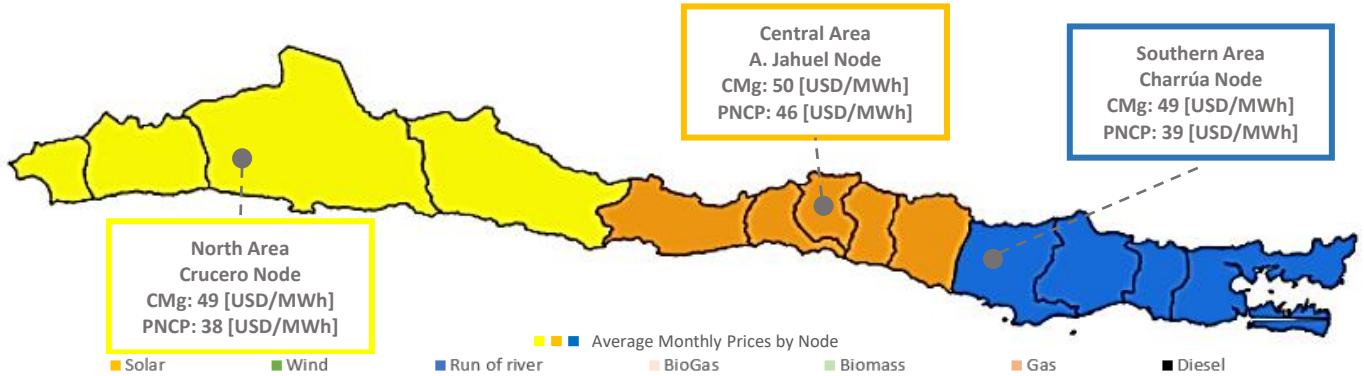


Technology kUSD	Oct-19	Sep-21	Oct-21	Oct-21 - Sep-21 Var. %
Solar	4.963	3.845	7.021	83%
Wind	273	-7	44	732%
Run of river	956	-475	-677	-42%
Biomass	0	0	0	0%
BioGas	45	-10	1	112%
Gas	0	0	0	0%
Diesel	0	0	0	0%
Total	6.237	3.353	6.389	91%

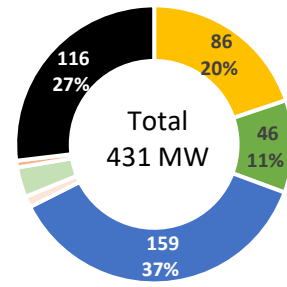
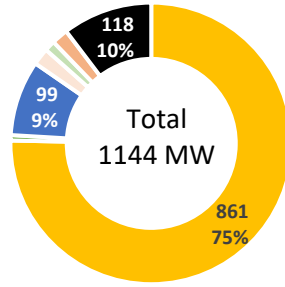
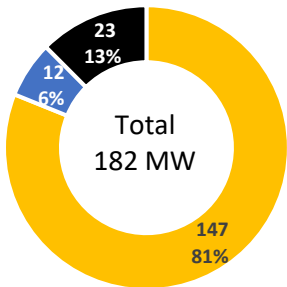
Average Monthly Prices by Node



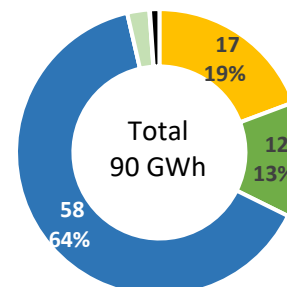
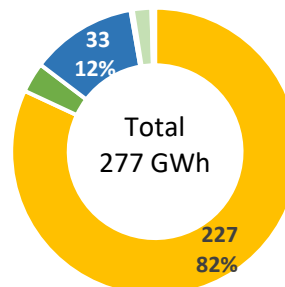
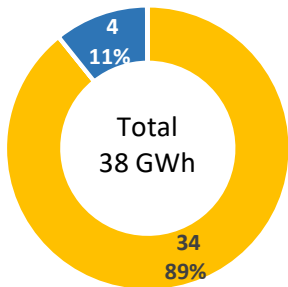
SEN's October - 2021 Average Prices by Node and Geographic Area



PMG/D Installed Capacity by Geographic Area



PMG/D Generation by Geographic Area



PMG/D Stabilized Price Mechanism Cost by Geographic Area

