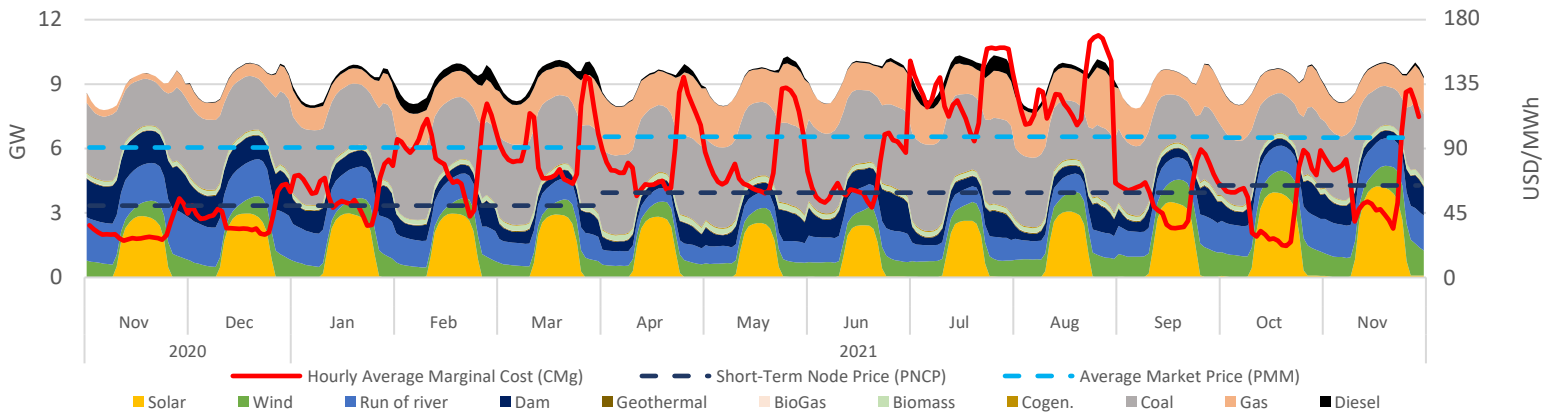


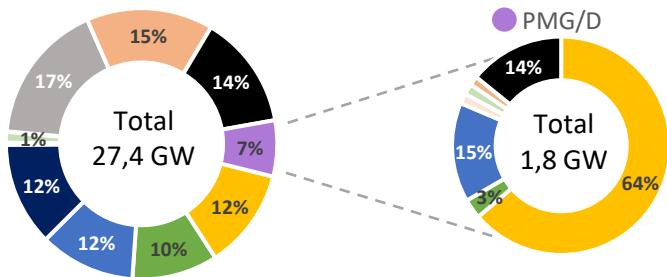
Executive Summary & Highlights

During nov, SEN's installed capacity was 27.387 MW, producing a total of 6,47 TWh, where NCRE technologies represented an 33% of the produced energy (2,2 TWh). It is expected that an additional 6.787 MW come into operation, of which 98% are NCRE plants (see "Summary Table - Projects Status"). Regarding the PMG/D segment, which represents 7% (1,8 GW) of SEN's installed capacity, and 6% (0,41 TWh) of the injected energy in the system, where solar stands out with 73% of the generation (303 GWh), followed by hydro with 17% (72 GWh) and wind representing 6% (27 GWh). Finally, the stabilized price mechanism cost above marginal price meant a systemic benefit of MMUSD 0,2; that was distributed among Solar, Hydraulic and Wind generation plants as 2,1; -1,9 and -0,4 MMUSD respectively.

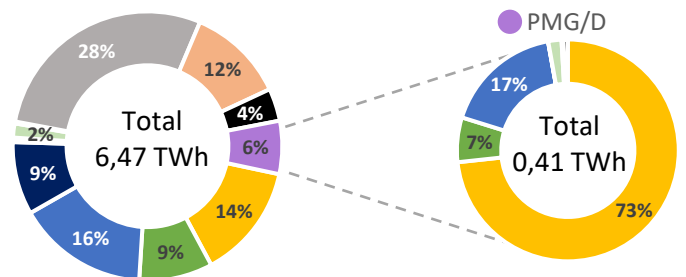
SEN Daily Hourly Average Technology Mix Production, and Alto Jahuel's Prices



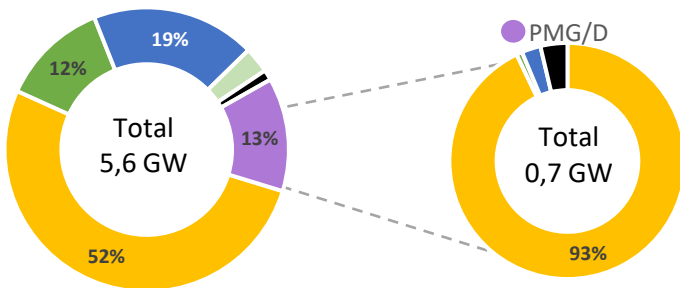
SEN's Installed Capacity [2]



SEN's Generation [3]



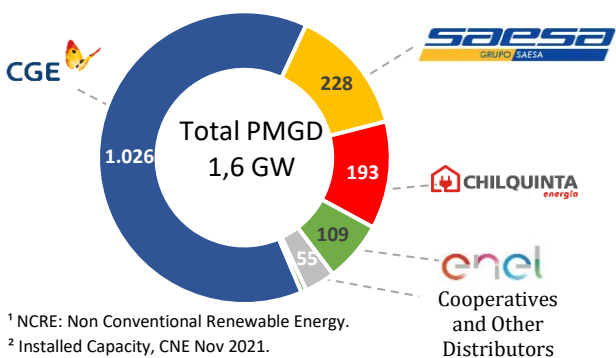
Projects Under Construction [4]



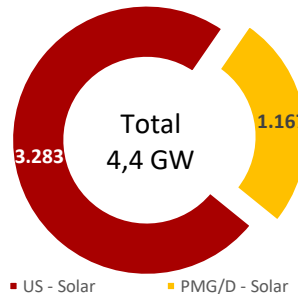
Summary Table – Project Status

| Technology MW | Commissioning Stage [2] | Under Construction | Environmental Approved [5] | Environmental Undergoing [6] |
|---------------|-------------------------|--------------------|----------------------------|------------------------------|
| Solar | 5 | 3.615 | 200 | 387 |
| Wind | 0 | 696 | 461 | 0 |
| Run of river | 0 | 1.075 | 0 | 0 |
| Geotérmica | 0 | 0 | 0 | 0 |
| Biomass | 19 | 166 | 0 | 0 |
| BioGas | 0 | 0 | 0 | 0 |
| Gas | 0 | 0 | 0 | 0 |
| Diesel | 0 | 94 | 70 | 0 |
| Total | 24 | 5.645 | 731 | 387 |

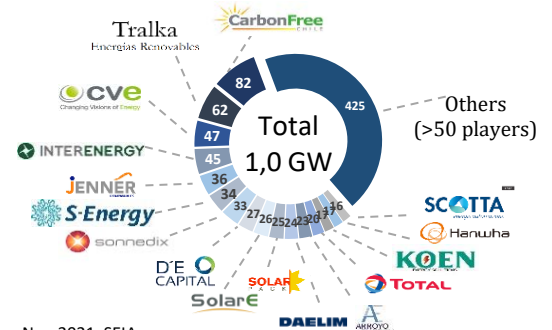
PMGD Installed Capacity by Distributor [7]



Solar Installed Capacity [2]



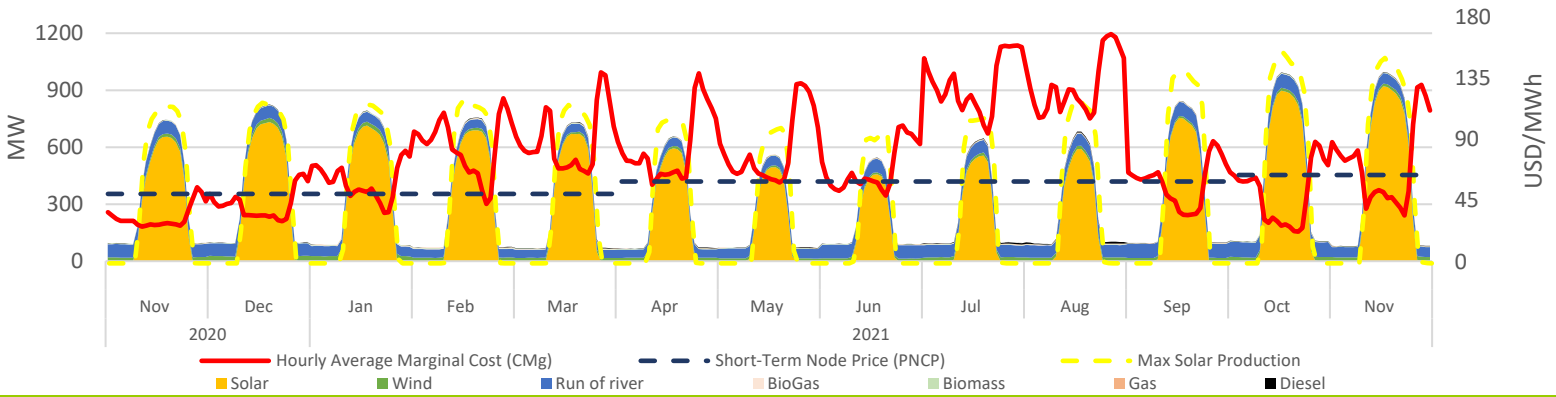
Solar PMG/D Operating Projects Market Share [7]



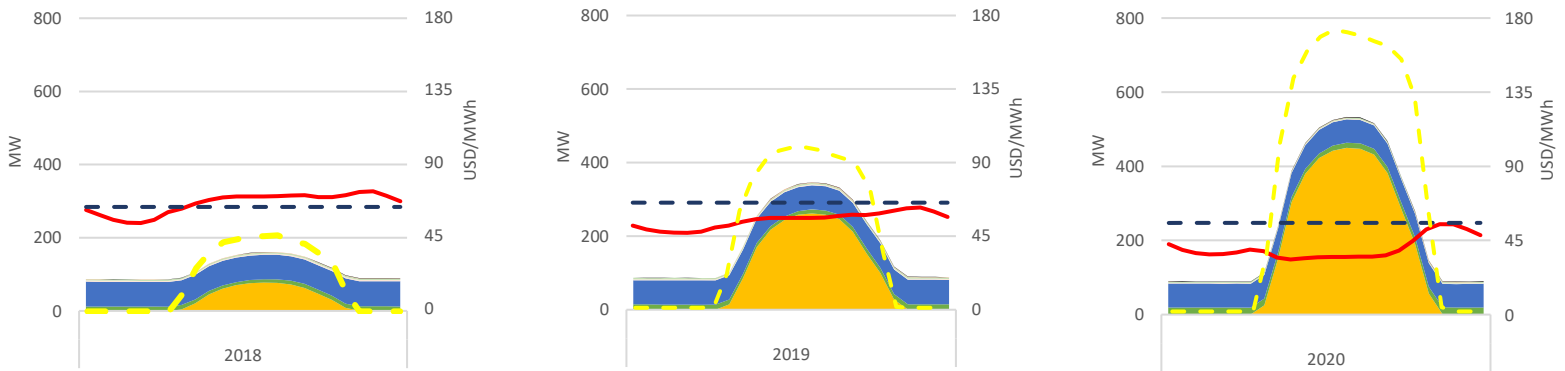
¹ NCRE: Non Conventional Renewable Energy.
² Installed Capacity, CNE Nov 2021.
³ SEN's operation reports, CEN Nov 2021.
⁴ Projects under construction, CNE Nov 2021.

⁵ Projects approved during Nov-2021, SEIA.
⁶ Projects Currently being Evaluated, Nov-2021, SEIA.
⁷ Based on public information.

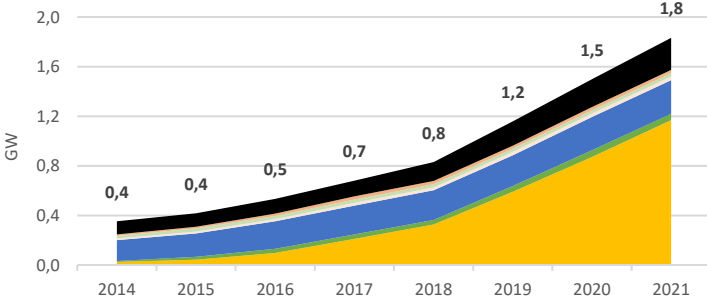
PMG/D Daily Hourly Average Production and Alto Jahuel's Prices



PMG/D Daily Hourly Average Production and Alto Jahuel's Prices

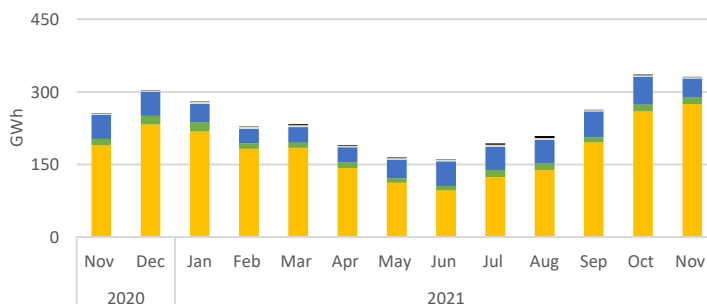


Installed Capacity by Technology



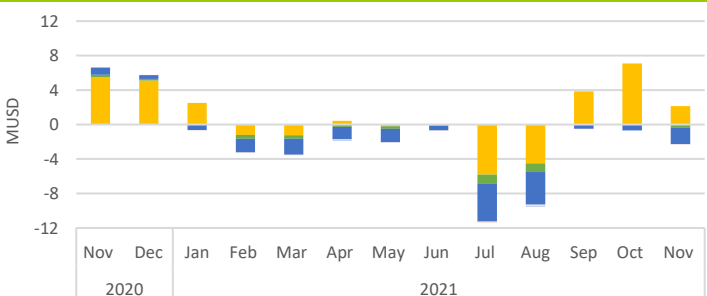
| Technology MW | Nov-19 | Oct-21 | Nov-21 | Nov-21 - Oct-21 Var. % |
|---------------|--------------|--------------|--------------|------------------------|
| Solar | 848 | 1,095 | 1,167 | 7% |
| Wind | 53 | 53 | 53 | 0% |
| Run of river | 270 | 270 | 270 | 0% |
| Biomass | 26 | 29 | 29 | 0% |
| BioGas | 28 | 28 | 28 | 0% |
| Gas | 25 | 25 | 25 | 0% |
| Diesel | 224 | 257 | 260 | 1% |
| Total | 1,474 | 1,756 | 1,832 | 4% |

Generation by Technology



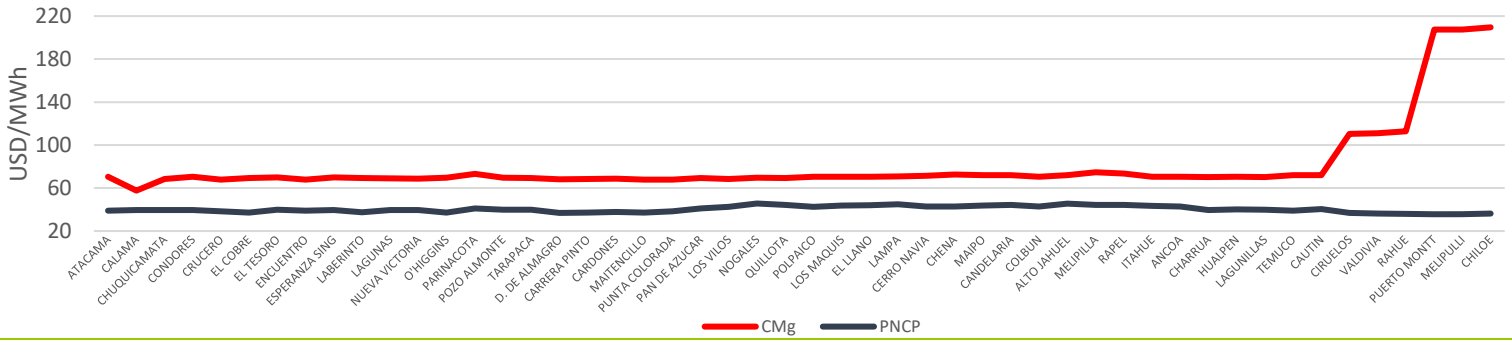
| Technology GWh | Nov-19 | Oct-21 | Nov-21 | Nov-21 - Oct-21 Var. % |
|----------------|------------|------------|------------|------------------------|
| Solar | 200 | 285 | 303 | 6% |
| Wind | 13 | 21 | 27 | 27% |
| Run of river | 85 | 95 | 72 | -25% |
| Biomass | 8 | 8 | 8 | -1% |
| BioGas | 1 | 1 | 0 | -80% |
| Gas | 1 | 1 | 1 | 27% |
| Diesel | 1 | 1 | 3 | 102% |
| Total | 308 | 412 | 413 | 0% |

Stabilized Price Mechanism Cost

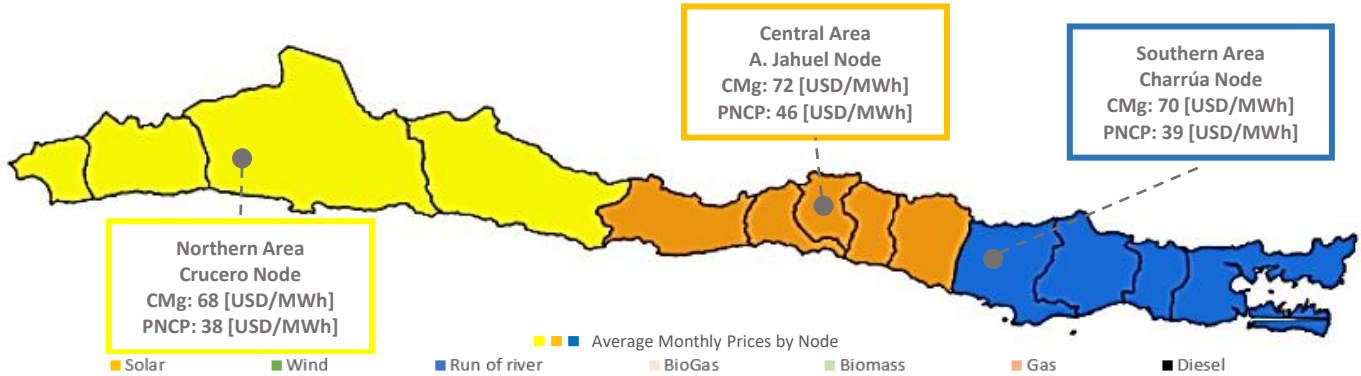


| Technology kUSD | Nov-19 | Oct-21 | Nov-21 | Nov-21 - Oct-21 Var. % |
|-----------------|--------------|--------------|-------------|------------------------|
| Solar | 5,525 | 7,021 | 2,126 | -70% |
| Wind | 268 | 44 | -402 | -1018% |
| Run of river | 820 | -677 | -1,894 | -180% |
| Biomass | 0 | 0 | 0 | 0% |
| BioGas | 36 | 1 | -41 | -3816% |
| Gas | 0 | 0 | 0 | 0% |
| Diesel | 0 | 0 | 0 | 0% |
| Total | 6,649 | 6,389 | -211 | -103% |

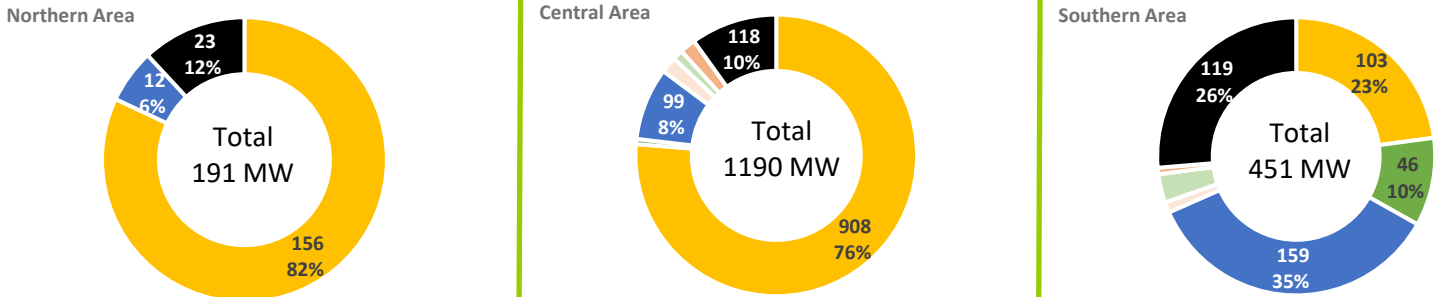
Average Monthly Prices by Node



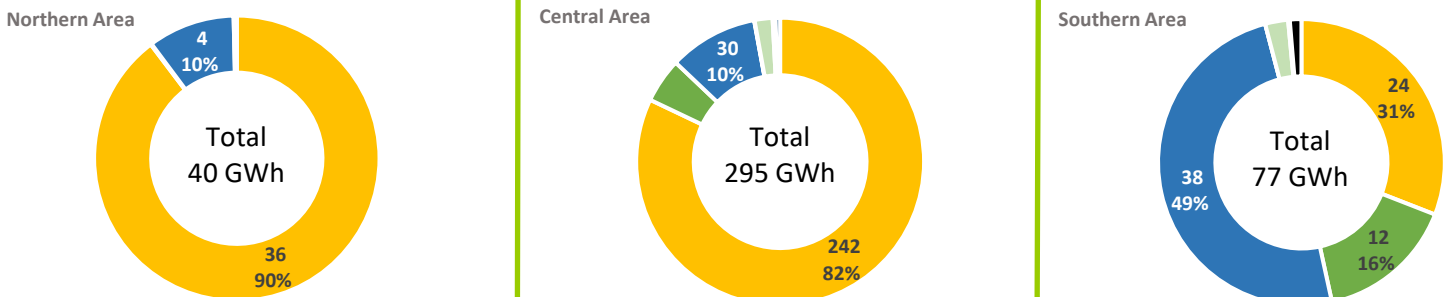
SEN's November - 2021 Average Prices by Node and Geographic Area



PMG/D Installed Capacity by Geographic Area



PMG/D Generation by Geographic Area



PMG/D Stabilized Price Mechanism Cost by Geographic Area

