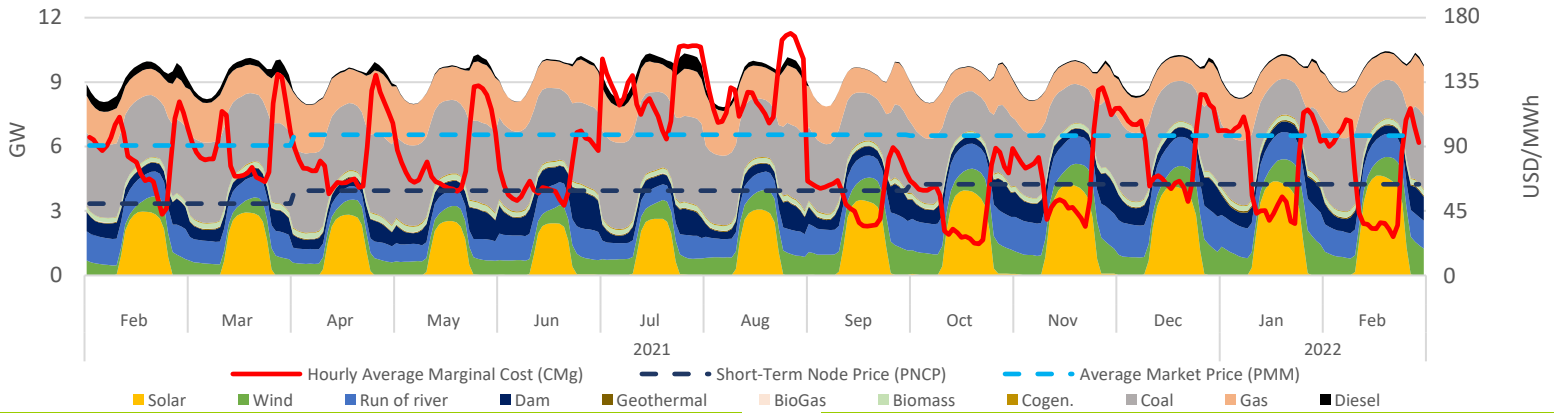


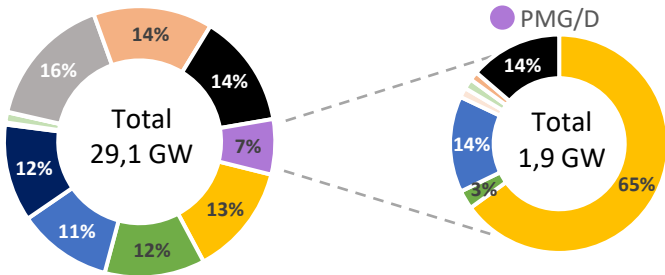
Executive Summary & Highlights

During feb, SEN's installed capacity was 29.105 MW, producing a total of 6,38 TWh, where NCRE technologies represented an 33% of the produced energy (2,12 TWh). It is expected that an additional 7.663 MW come into operation, of which 98% are NCRE plants (see "Summary Table - Projects Status"). Regarding the PMG/D segment, which represents 7% (1,9 GW) of SEN's installed capacity, and 5% (0,33 TWh) of the injected energy in the system, where solar stands out with 79% of the generation (262 GWh), followed by hydro with 14% (47 GWh) and wind representing 4% (12 GWh). Finally, the stabilized price mechanism cost above marginal price meant a systemic cost of MMUSD 1,6; that was distributed among Solar, Hydraulic and Wind generation plants as 3,9; -2,0 and -0,3 MMUSD respectively.

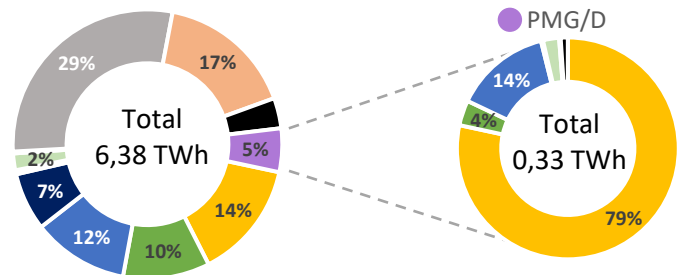
SEN Daily Hourly Average Technology Mix Production, and Alto Jahuel's Prices



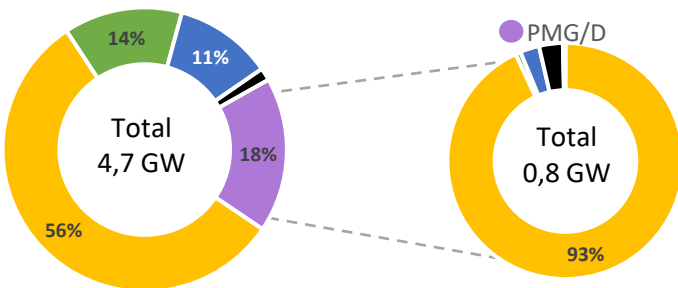
SEN's Installed Capacity [2]



SEN's Generation [3]



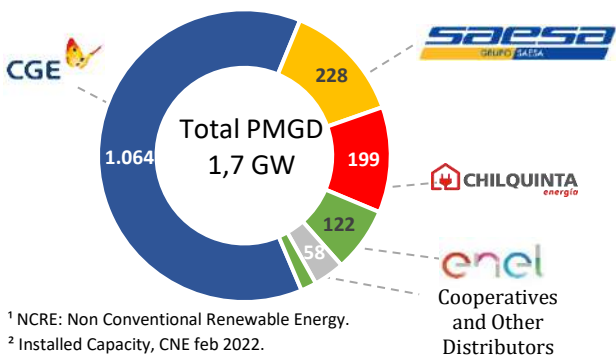
Projects Under Construction [4]



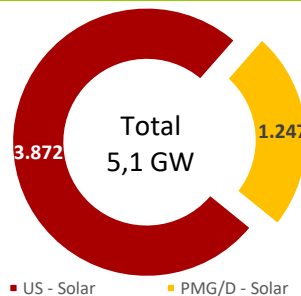
Summary Table – Project Status

Technology MW	Commissioning		Environmental	
	Stage [2]	Under Construction	Approved [5]	Undergoing [6]
Solar	1.211	3.410	476	427
Wind	245	639	130	273
Run of river	561	546	0	0
Geotérmica	33	0	0	0
Biomass	166	0	0	0
BioGas	0	0	0	0
Gas	0	0	0	0
Diesel	150	94	0	0
Total	2.365	4.692	607	700

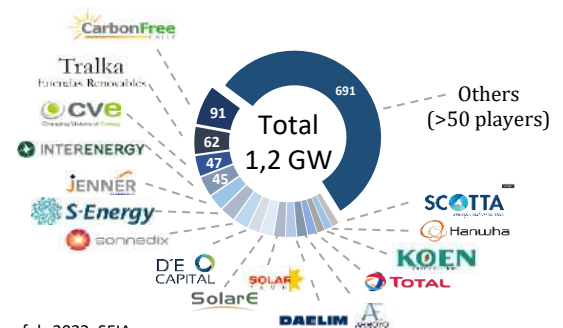
PMGD Installed Capacity by Distributor [7]



Solar Installed Capacity [2]



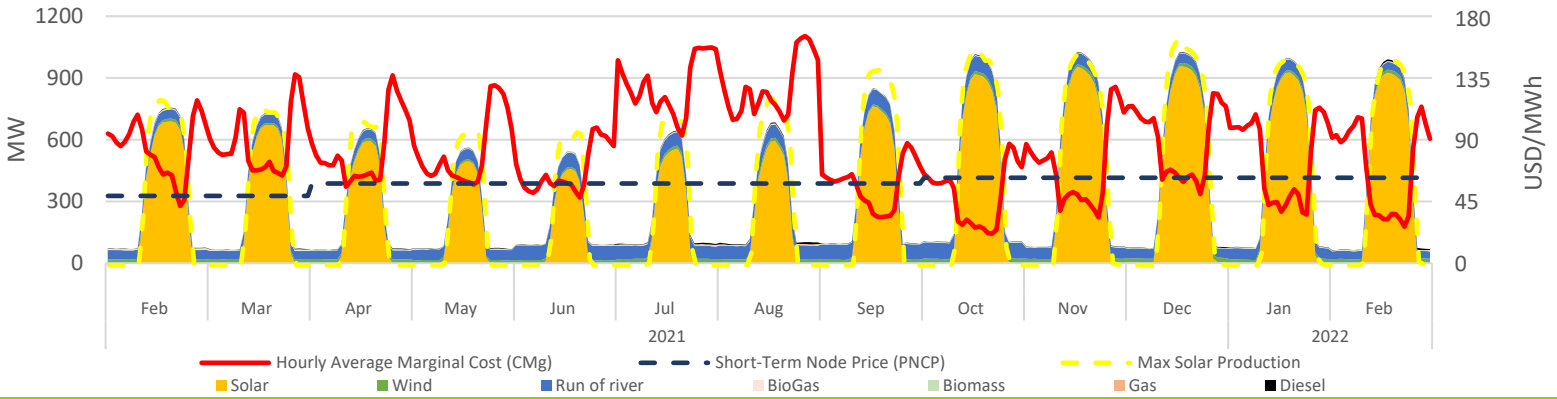
Solar PMG/D Operating Projects Market Share [7]



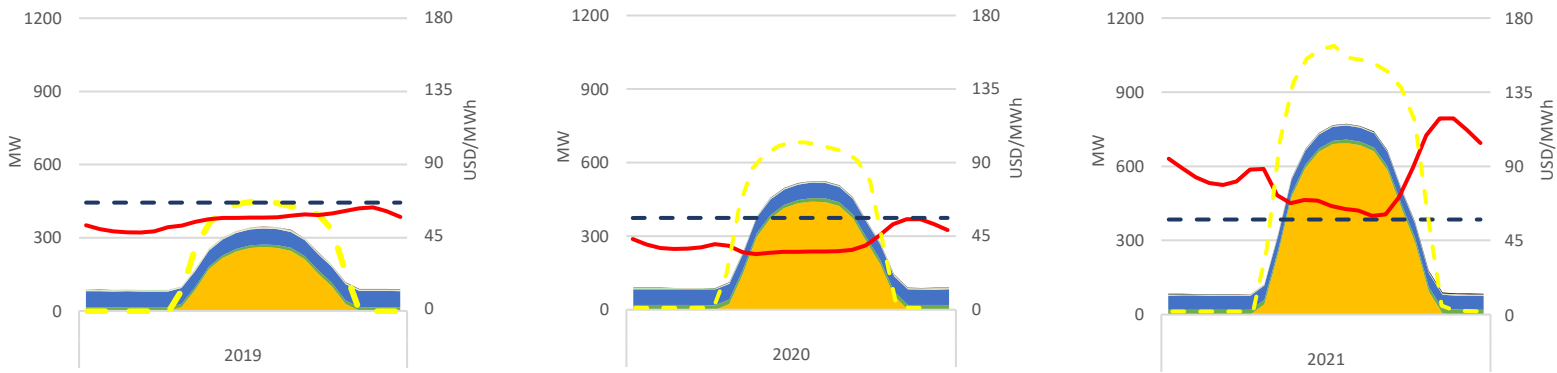
¹ NCRE: Non Conventional Renewable Energy.
² Installed Capacity, CNE feb 2022.
³ SEN's operation reports, CEN feb 2022.
⁴ Projects under construction, CNE feb 2022.

⁵ Projects approved during feb-2022, SEIA.
⁶ Projects Currently being Evaluated, feb-2022, SEIA.
⁷ Based on public information.

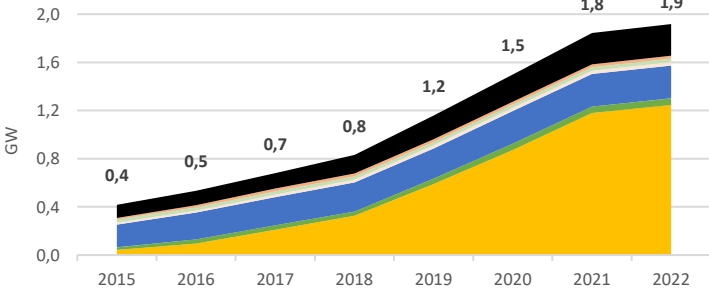
PMG/D Daily Hourly Average Production and Alto Jahuel's Prices



PMG/D Daily Hourly Average Production and Alto Jahuel's Prices



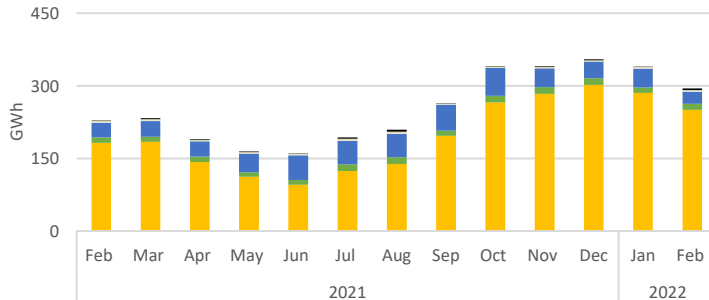
Installed Capacity by Technology



Technology MW

Technology MW	Feb-21	Jan-22	Feb-22	Feb-22 - Jan-22 Var. %
Solar	943	1.232	1.247	1%
Wind	53	53	53	0%
Run of river	270	273	273	0%
Biomass	26	29	29	0%
BioGas	28	28	28	0%
Gas	25	25	25	0%
Diesel	238	260	263	1%
Total	1.583	1.900	1.918	1%

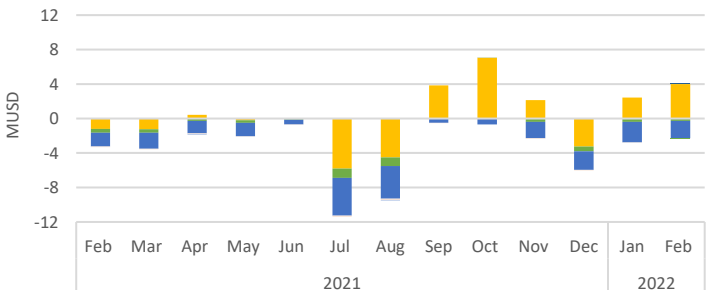
Generation by Technology



Technology GWh

Technology GWh	Feb-21	Jan-22	Feb-22	Feb-22 - Jan-22 Var. %
Solar	193	298	262	-12%
Wind	11	11	12	11%
Run of river	54	72	47	-35%
Biomass	9	6	8	24%
BioGas	2	1	1	13%
Gas	1	1	1	-34%
Diesel	1	1	3	135%
Total	272	391	334	-15%

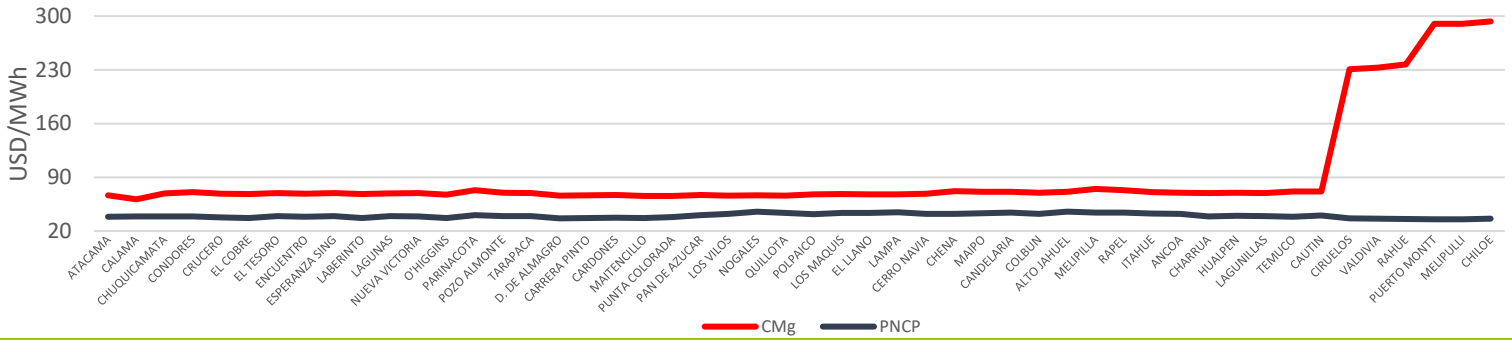
Stabilized Price Mechanism Cost



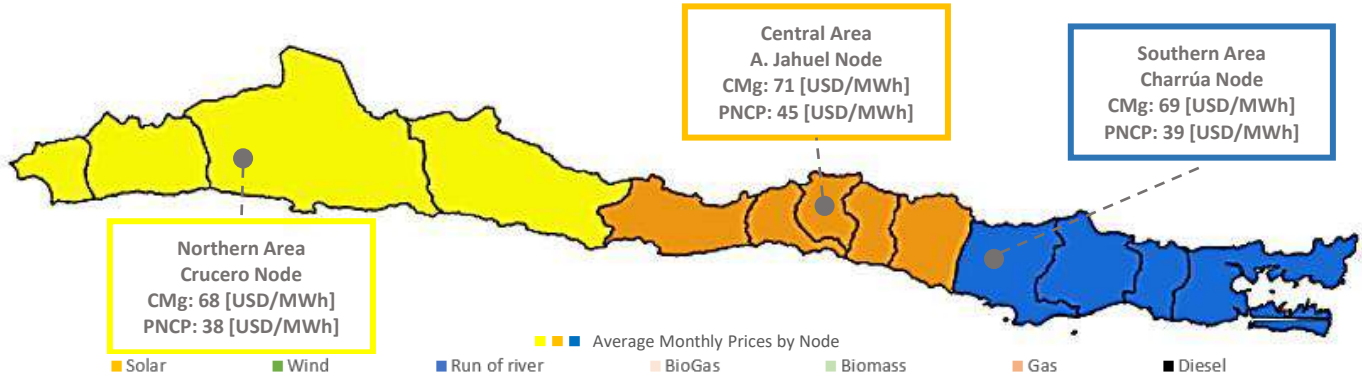
Technology kUSD

Technology kUSD	Feb-21	Jan-22	Feb-22	Feb-22 - Jan-22 Var. %
Solar	-1.209	2.442	3.991	63%
Wind	-451	-394	-273	31%
Run of river	-1.595	-2.373	-2.015	15%
Biomass	0	0	0	0%
BioGas	-47	-51	-39	23%
Gas	0	0	0	0%
Diesel	0	0	0	0%
Total	-3.302	-376	1.649	-539%

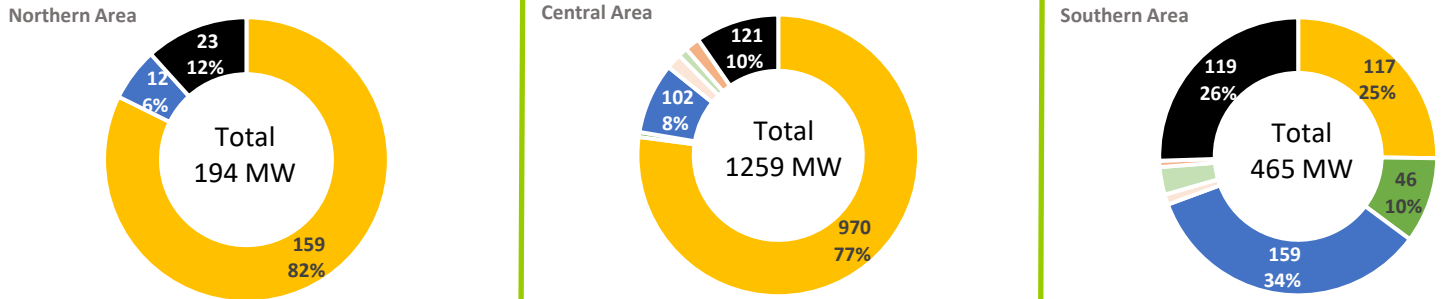
Average Monthly Prices by Node



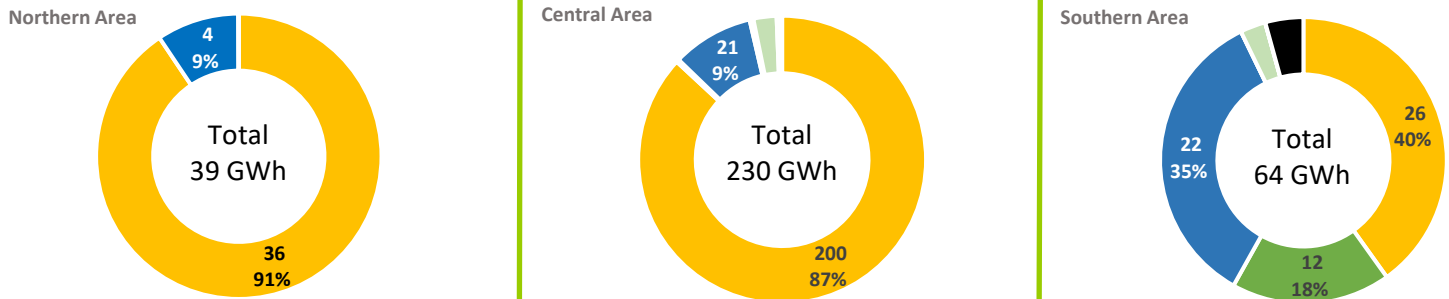
SEN's February - 2022 Average Prices by Node and Geographic Area



PMG/D Installed Capacity by Geographic Area



PMG/D Generation by Geographic Area



PMG/D Stabilized Price Mechanism Cost by Geographic Area

