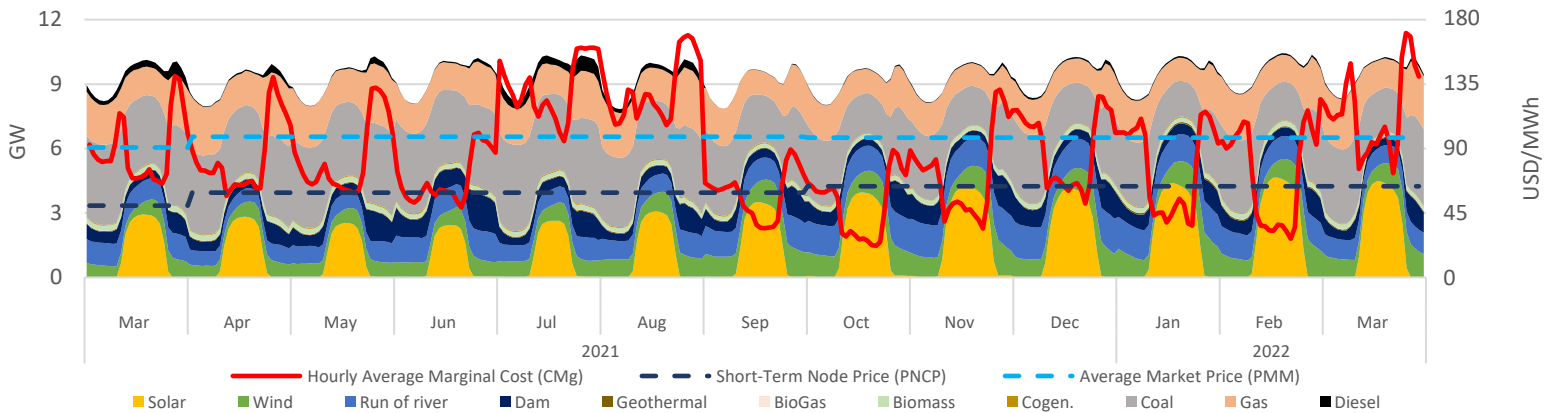


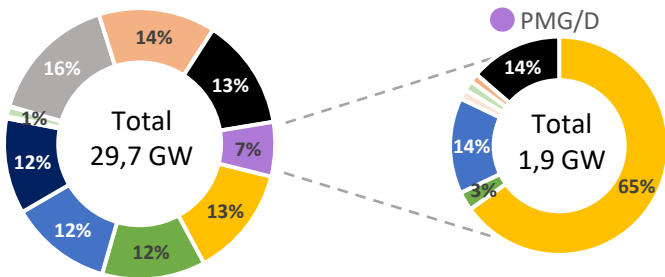
Executive Summary & Highlights

During mar, SEN's installed capacity was 29.673 MW, producing a total of 6,98 TWh, where NCRE technologies represented an 31% of the produced energy (2,18 TWh). It is expected that an additional 8.572 MW come into operation, of which 98% are NCRE plants (see "Summary Table - Projects Status"). Regarding the PMG/D segment, which represents 7% (1,9 GW) of SEN's installed capacity, and 5% (0,35 TWh) of the injected energy in the system, where solar stands out with 74% of the generation (258 GWh), followed by hydro with 18% (60 GWh) and wind representing 4% (15 GWh). Finally, the stabilized price mechanism cost above marginal price meant a systemic benefit of MMUSD 8,4; that was distributed among Solar, Hydraulic and Wind generation plants as -4,1; -3,3 and -0,8 MMUSD respectively.

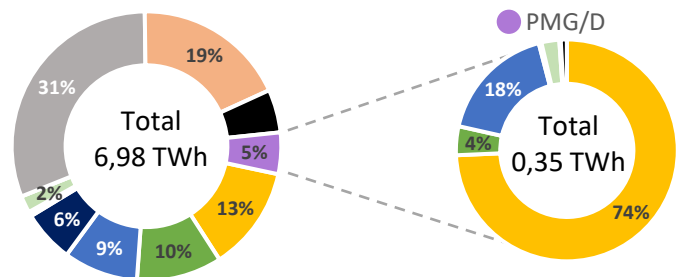
SEN Daily Hourly Average Technology Mix Production, and Alto Jahuel's Prices



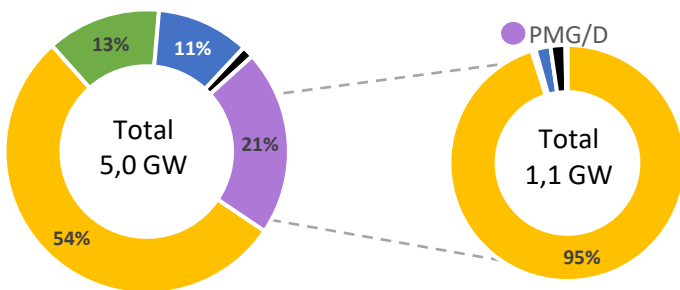
SEN's Installed Capacity [2]



SEN's Generation [3]



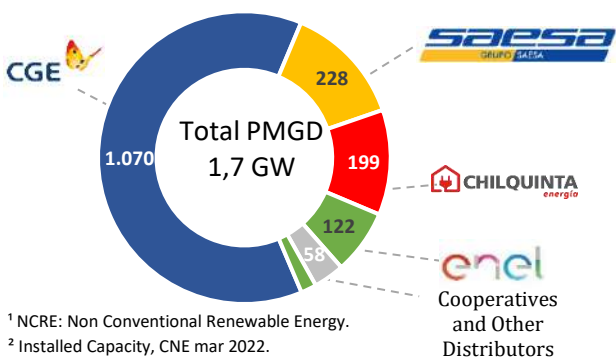
Projects Under Construction [4]



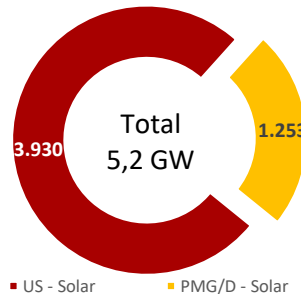
Summary Table – Project Status

Technology MW	Commissioning		Environmental	
	Stage [2]	Under Construction	Approved [5]	Undergoing [6]
Solar	1.474	3.678	1.021	735
Wind	245	652	215	535
Run of river	295	546	0	0
Geotérmica	33	0	0	0
Biomass	166	0	0	0
BioGas	0	0	0	0
Gas	0	0	0	0
Diesel	155	88	0	0
Total	2.368	4.968	1.236	1.270

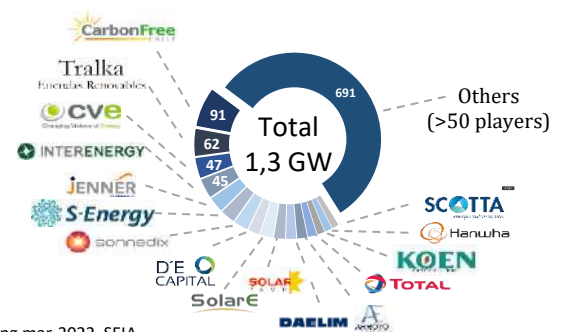
PMGD Installed Capacity by Distributor [7]



Solar Installed Capacity [2]



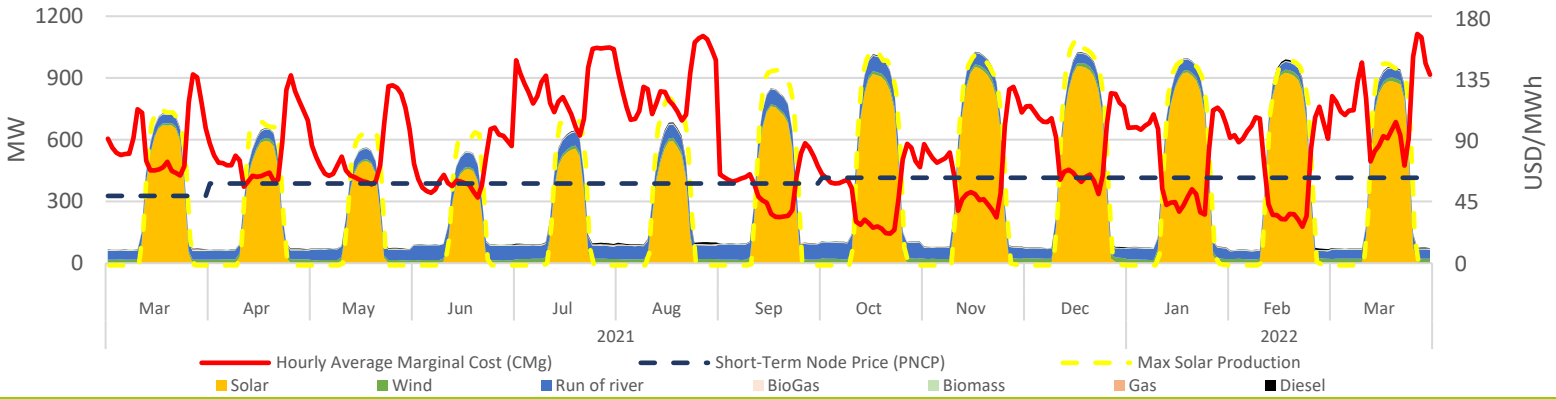
Solar PMG/D Operating Projects Market Share [7]



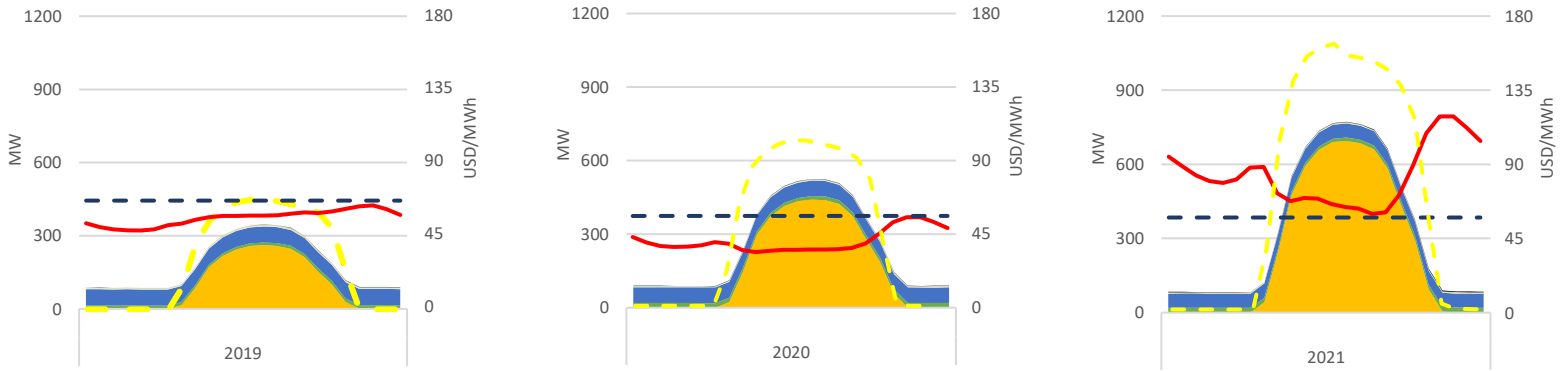
¹ NCRE: Non Conventional Renewable Energy.
² Installed Capacity, CNE mar 2022.
³ SEN's operation reports, CEN mar 2022.
⁴ Projects under construction, CNE mar 2022.

⁵ Projects approved during mar-2022, SEIA.
⁶ Projects Currently being Evaluated, mar-2022, SEIA.
⁷ Based on public information.

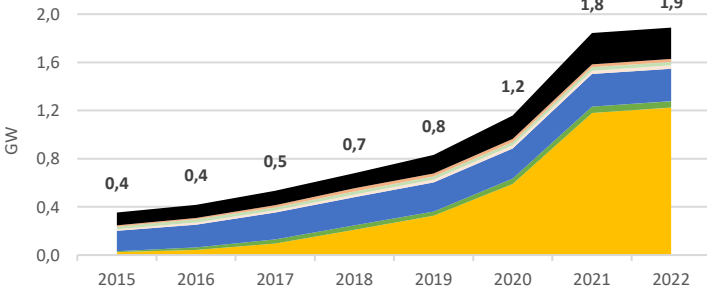
PMG/D Daily Hourly Average Production and Alto Jahuel's Prices



PMG/D Daily Hourly Average Production and Alto Jahuel's Prices

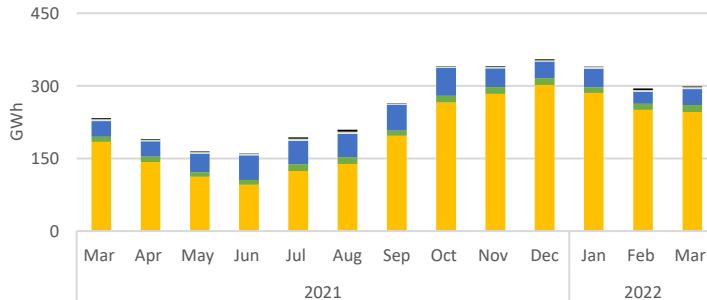


Installed Capacity by Technology



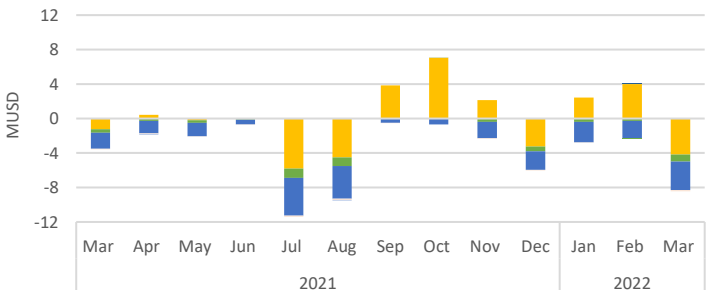
Technology MW	Mar-21	Feb-22	Mar-22	Mar-22 - Feb-22 Var. %
Solar	943	1.247	1.253	0%
Wind	53	53	53	0%
Run of river	270	273	273	0%
Biomass	26	29	29	0%
BioGas	28	28	28	0%
Gas	25	25	25	0%
Diesel	238	263	263	0%
Total	1.583	1.918	1.924	0%

Generation by Technology



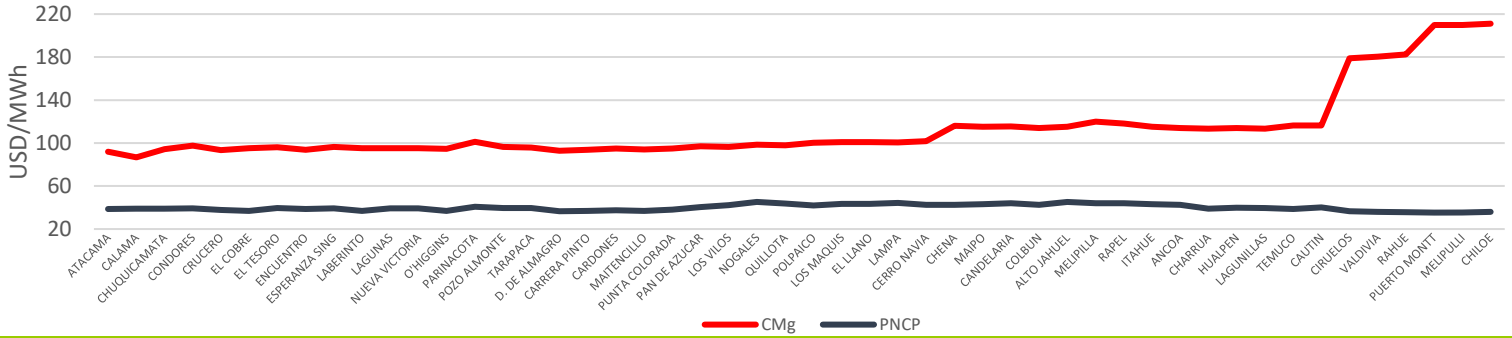
Technology GWh	Mar-21	Feb-22	Mar-22	Mar-22 - Feb-22 Var. %
Solar	196	262	258	-2%
Wind	11	12	15	22%
Run of river	54	47	60	29%
Biomass	5	8	9	16%
BioGas	2	1	1	38%
Gas	2	1	1	-5%
Diesel	2	3	3	-11%
Total	271	334	347	4%

Stabilized Price Mechanism Cost

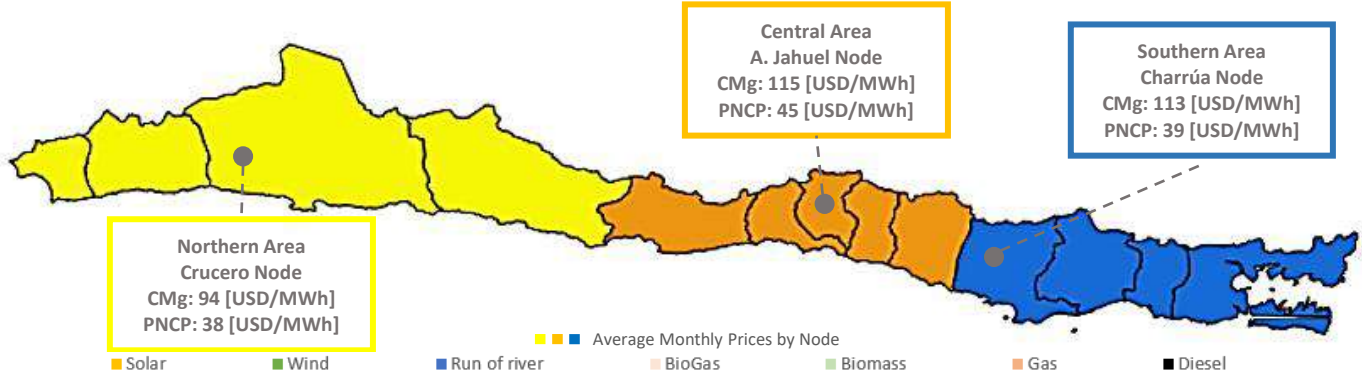


Technology kUSD	Mar-21	Feb-22	Mar-22	Mar-22 - Feb-22 Var. %
Solar	-1.244	3.991	-4.167	-204%
Wind	-417	-273	-828	-204%
Run of river	-1.856	-2.015	-3.314	-64%
Biomass	0	0	0	0%
BioGas	-70	-39	-122	-213%
Gas	0	0	0	0%
Diesel	0	0	0	0%
Total	-3.587	1.649	-8.430	-611%

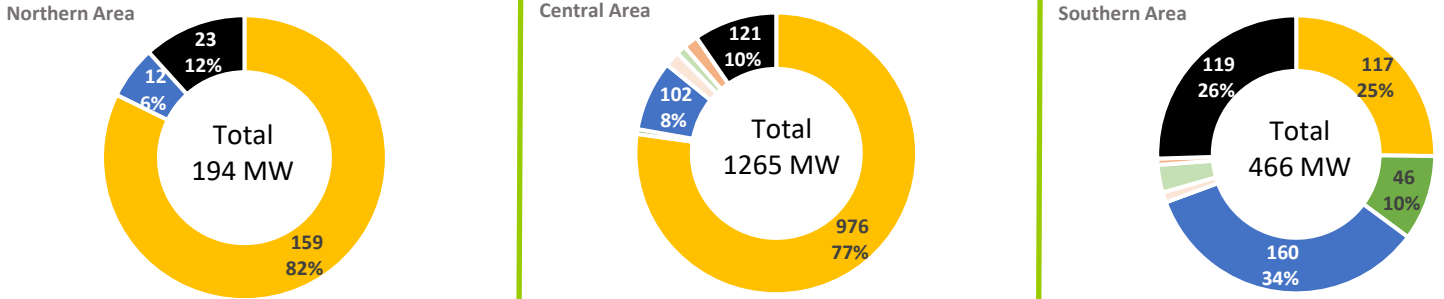
Average Monthly Prices by Node



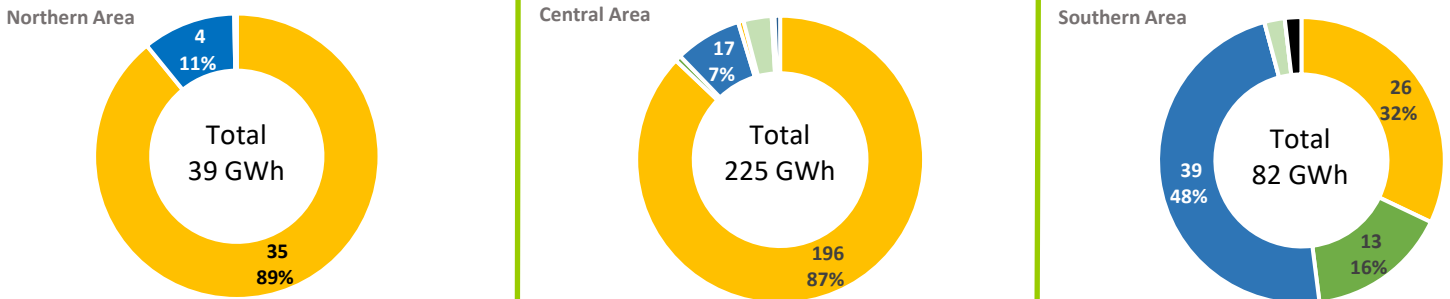
SEN's March - 2022 Average Prices by Node and Geographic Area



PMG/D Installed Capacity by Geographic Area



PMG/D Generation by Geographic Area



PMG/D Stabilized Price Mechanism Cost by Geographic Area

