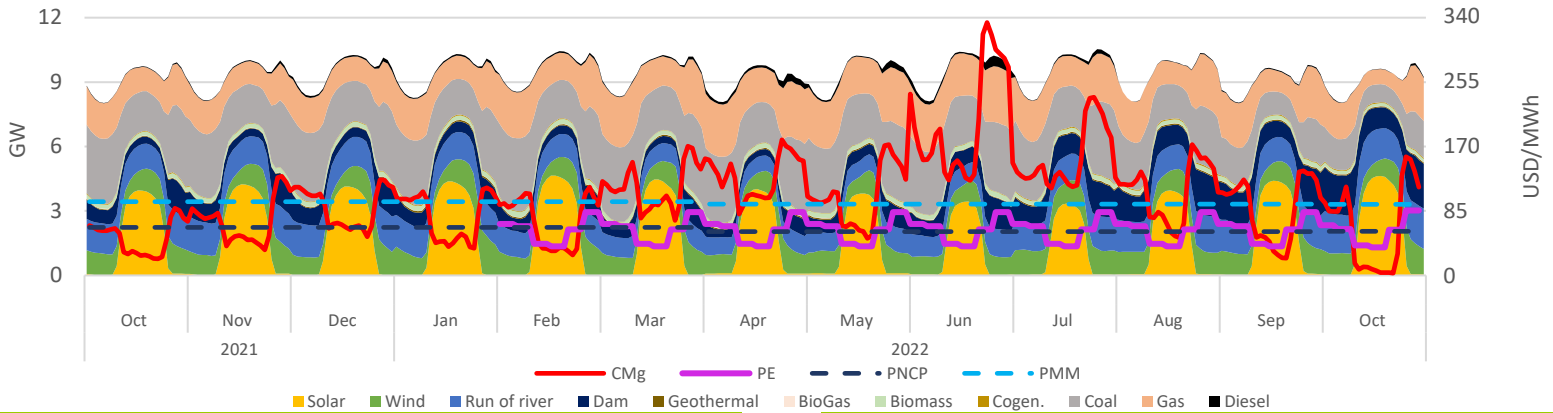


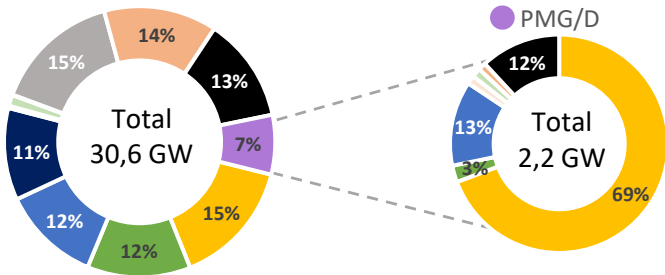
Executive Summary & Highlights

During oct, SEN's installed capacity was 30.647 MW, producing a total of 6,60 TWh, where NCRE technologies represented an 36% of the produced energy (2,4 TWh). It is expected that an additional 9.712 MW come into operation, of which 99% are NCRE plants (see "Summary Table - Projects Status"). Regarding the PMG/D segment, which represents 7% (2,2 GW) of SEN's installed capacity, and 7% (0,45 TWh) of the injected energy in the system, where solar stands out with 72% of the generation (320 GWh), followed by hydro with 24% (106 GWh) and wind representing 3% (12 GWh). Finally, the stabilized price mechanism cost above marginal price meant a systemic cost of MMUSD 13,7 ; that was distributed among Solar, Hydraulic and Wind generation plants as 14,7 ; -0,1 and -1 MMUSD respectively.

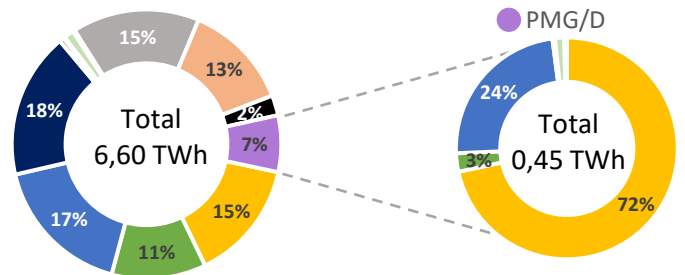
SEN Daily Hourly Average Technology Mix Production, and Alto Jahuel's Prices



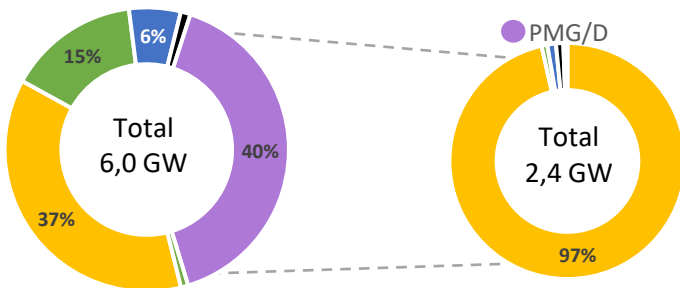
SEN's Installed Capacity [2]



SEN's Generation [3]



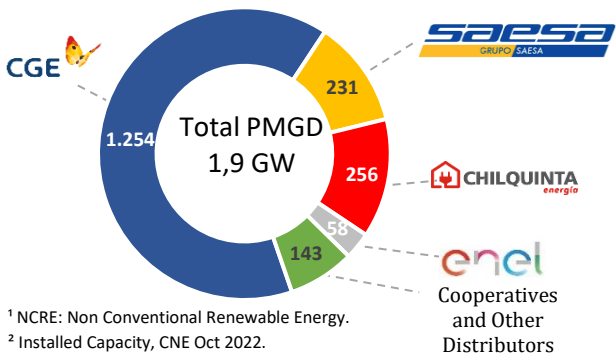
Projects Under Construction [4]



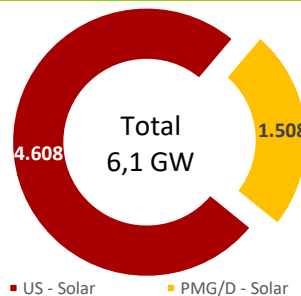
Summary Table – Project Status

Technology MW	Commissioning Stage [2]	Under Construction	Environmental Approved [5]	Environmental Undergoing [6]
Solar	2.910	4.571	326	757
Wind	212	922	0	167
Run of river	31	383	0	0
Geotérmica	33	0	0	0
Biomass	166	3	0	0
Bess	0	60	0	0
Gas	0	0	0	0
Diesel	3	91	0	0
Total	3.355	6.031	326	925

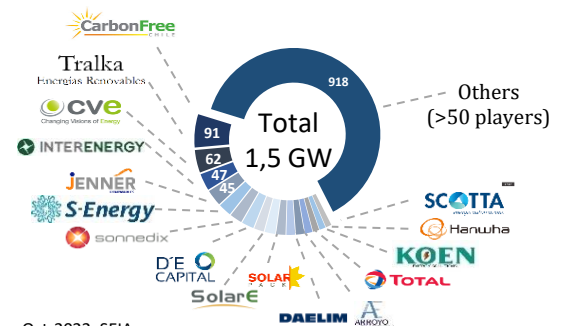
PMGD Installed Capacity by Distributor [7]



Solar Installed Capacity [2]



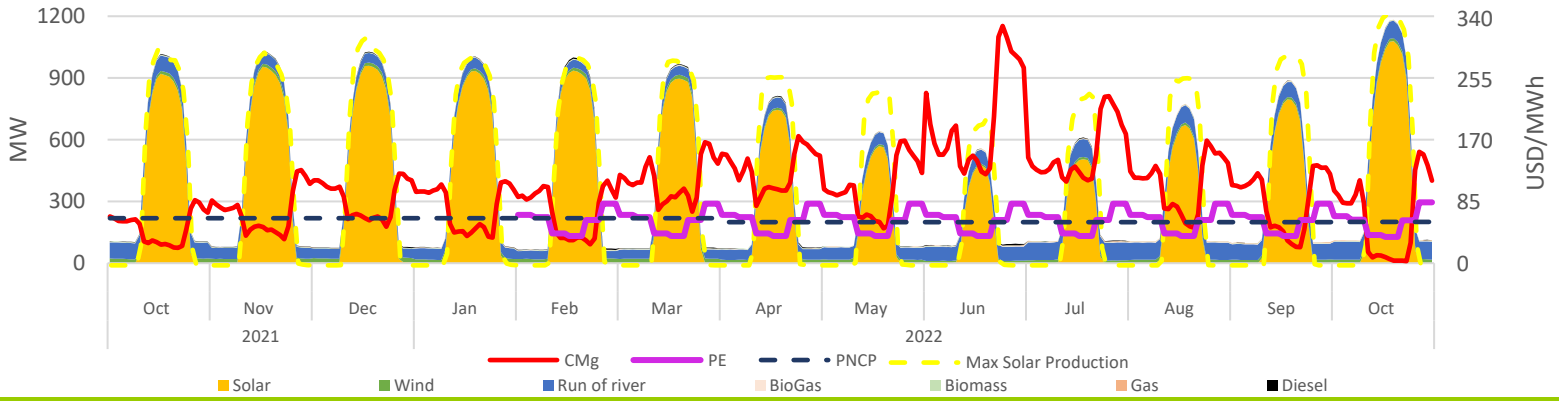
Solar PMG/D Operating Projects Market Share [7]



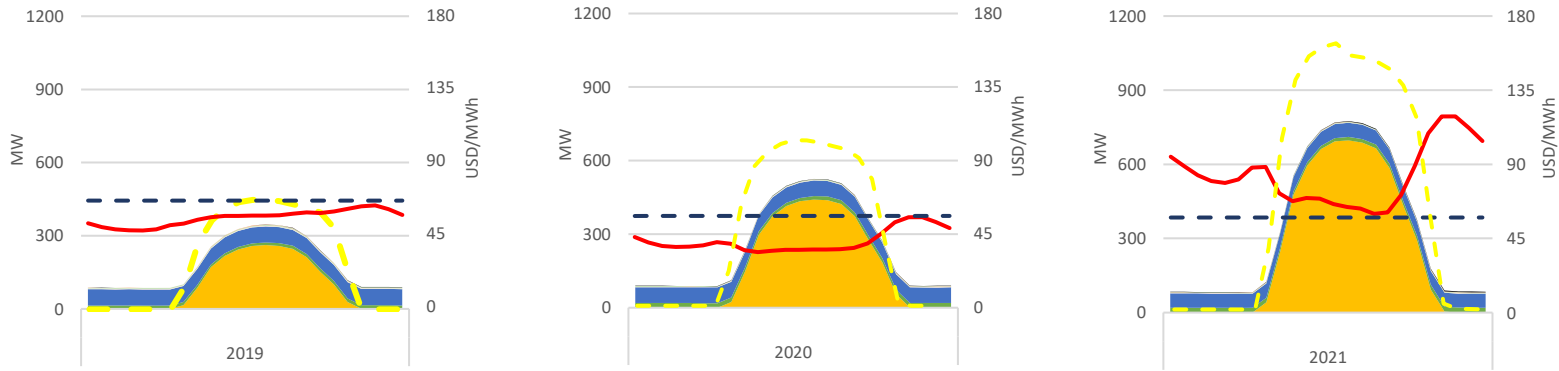
¹ NCRE: Non Conventional Renewable Energy.
² Installed Capacity, CNE Oct 2022.
³ SEN's operation reports, CEN Oct 2022.
⁴ Projects under construction, CNE Oct 2022.

⁵ Projects approved during Oct-2022, SEIA.
⁶ Projects Currently being Evaluated, Oct-2022, SEIA.
⁷ Based on public information.

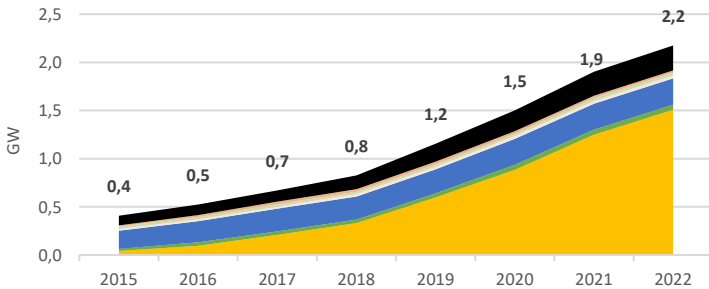
PMG/D Daily Hourly Average Production and Alto Jahuel's Prices



PMG/D Daily Hourly Average Production and Alto Jahuel's Prices

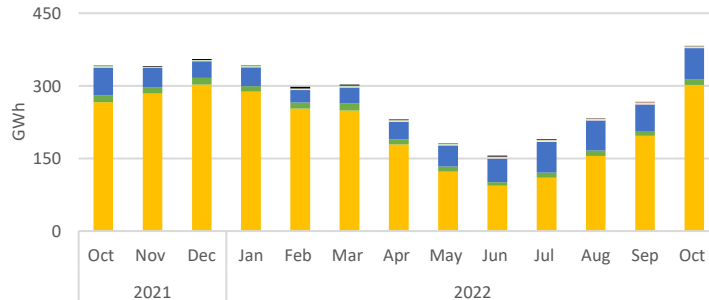


Installed Capacity by Technology



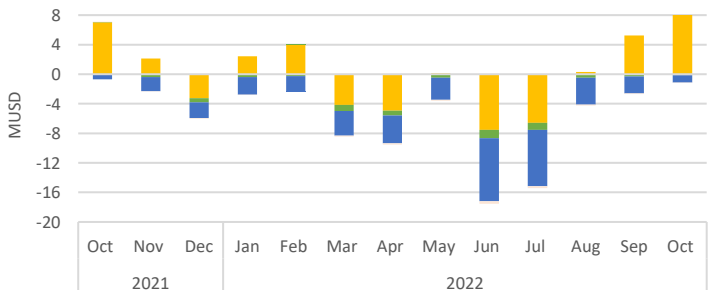
Technology MW	Oct-21	Sep-22	Oct-22	Oct-22 - Sep-22 Var. %
Solar	1,084	1,493	1,508	1%
Wind	53	53	53	0%
Run of river	270	274	274	0%
Biomass	29	29	29	0%
BioGas	28	28	28	0%
Gas	25	25	25	0%
Diesel	251	259	259	0%
Total	1,736	2,161	2,176	1%

Generation by Technology



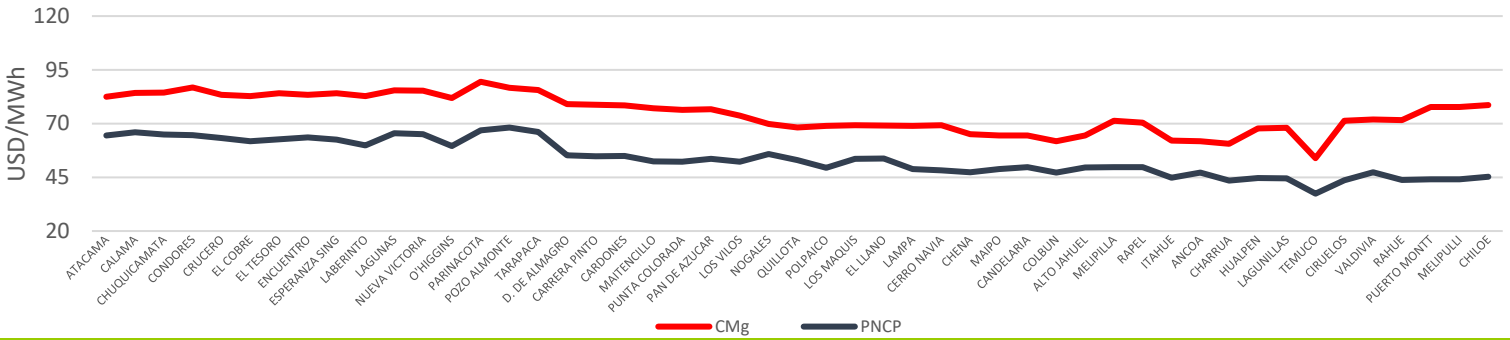
Technology GWh	Oct-21	Sep-22	Oct-22	Oct-22 - Sep-22 Var. %
Solar	278	213	321	51%
Wind	14	10	12	20%
Run of river	95	89	106	19%
Biomass	8	7	6	-13%
BioGas	1	2	2	-21%
Gas	1	2	1	-39%
Diesel	1	0	0	0%
Total	397	324	448	38%

Stabilized Price Mechanism Cost

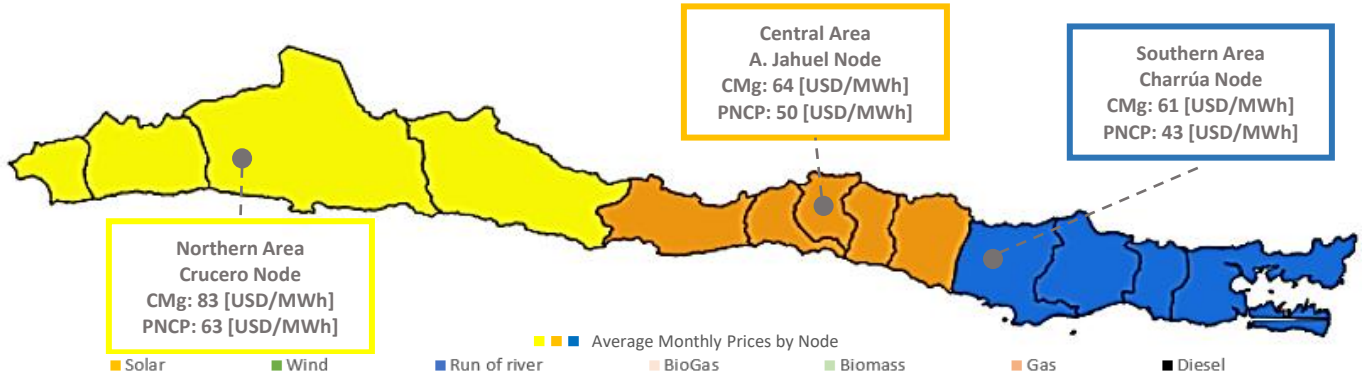


Technology kUSD	Oct-21	Sep-22	Oct-22	Oct-22 - Sep-22 Var. %
Solar	7,021	5,261	14,782	181%
Wind	44	-316	-126	60%
Run of river	-677	-2,298	-982	57%
Biomass	0	0	0	0%
BioGas	1	-83	-5	94%
Gas	0	0	0	0%
Diesel	0	0	0	0%
Total	6,389	2,564	13,669	433%

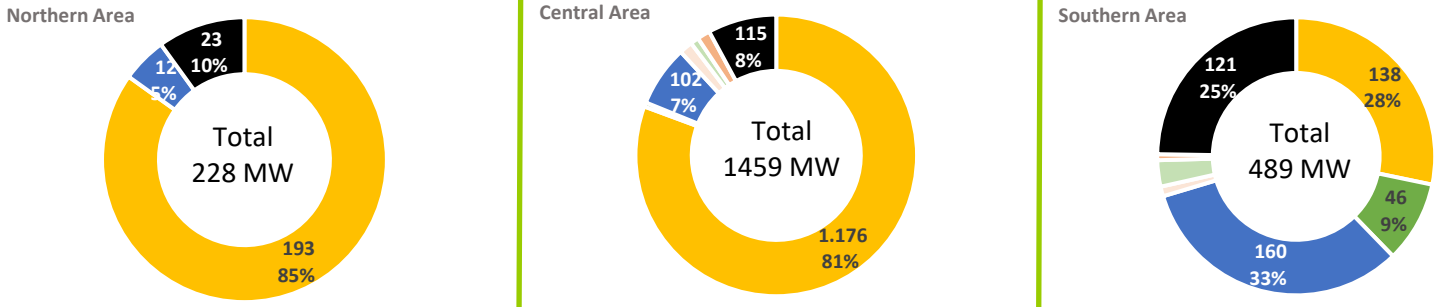
Average Monthly Prices by Node



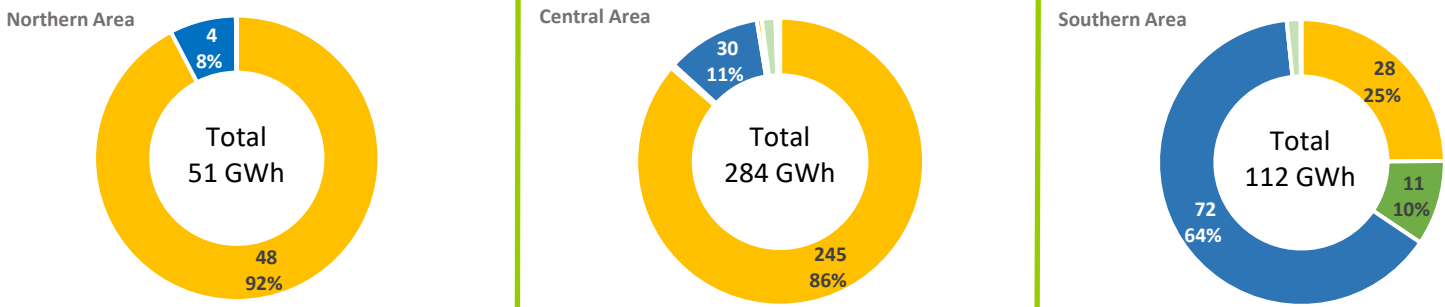
SEN's October - 2022 Average Prices by Node and Geographic Area



PMG/D Installed Capacity by Geographic Area



PMG/D Generation by Geographic Area



PMG/D Stabilized Price Mechanism Cost by Geographic Area

