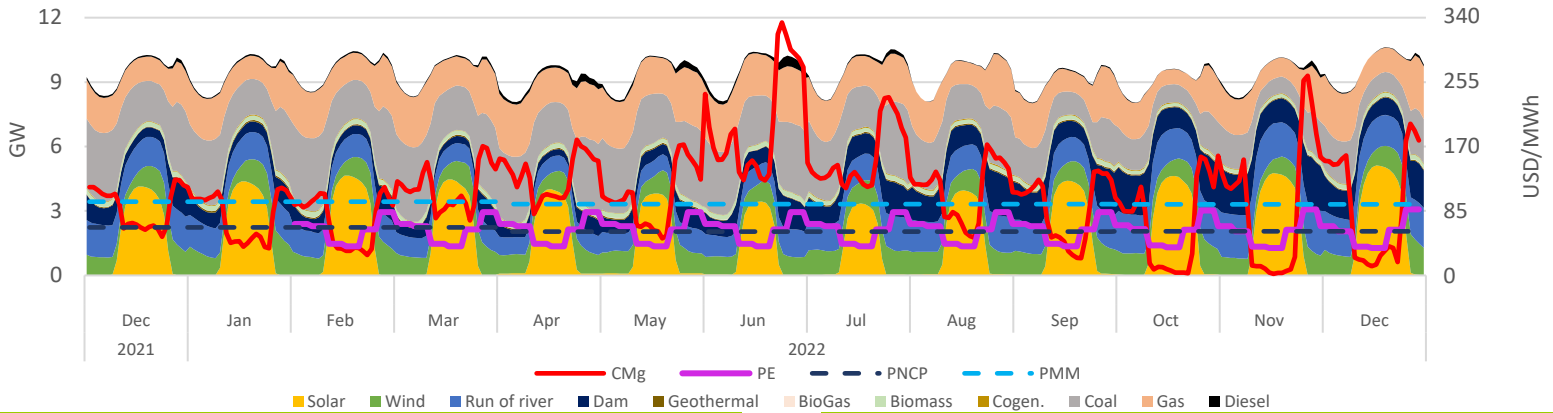


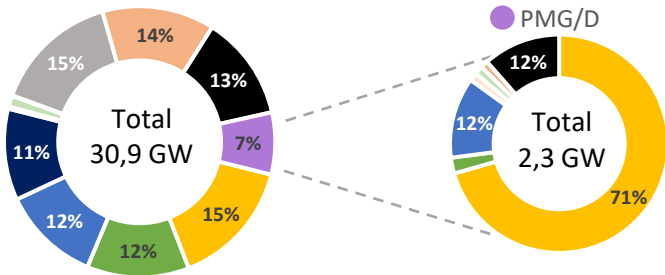
Executive Summary & Highlights

During dec, SEN's installed capacity was 30.861 MW, producing a total of 7,1 TWh, where NCRE technologies represented an 37% of the produced energy (2,65 TWh). It is expected that an additional 8.774 MW come into operation, of which 99% are NCRE plants (see "Summary Table - Projects Status"). Regarding the PMG/D segment, which represents 7% (2,3 GW) of SEN's installed capacity, and 7% (0,51 TWh) of the injected energy in the system, where solar stands out with 80% of the generation (406 GWh), followed by hydro with 16% (80 GWh) and wind representing 3% (14 GWh). Finally, the stabilized price mechanism cost above marginal price meant a systemic cost of MMUSD 15 ; that was distributed among Solar, Hydraulic and Wind generation plants as 17 ; -1,5 and -0,5 MMUSD respectively.

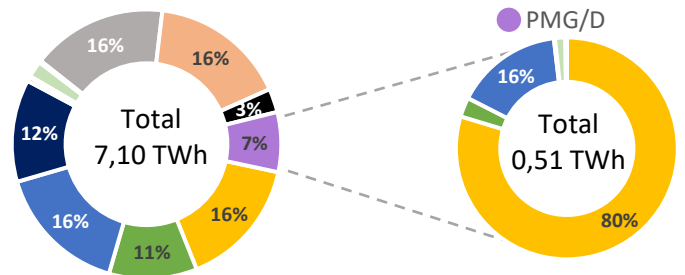
SEN Daily Hourly Average Technology Mix Production, and Alto Jahuel's Prices



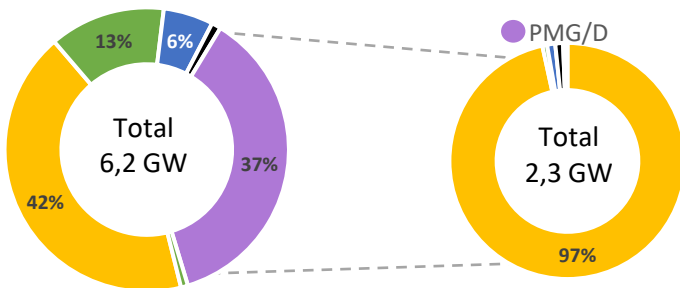
SEN's Installed Capacity [2]



SEN's Generation [3]



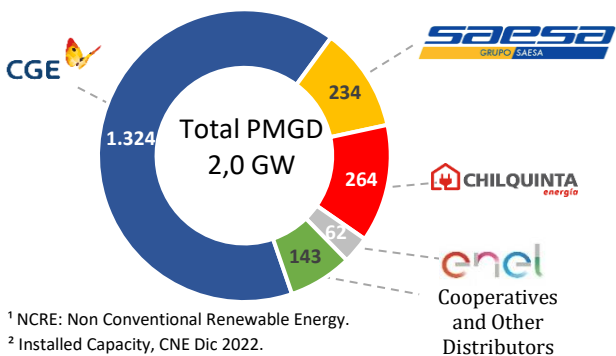
Projects Under Construction [4]



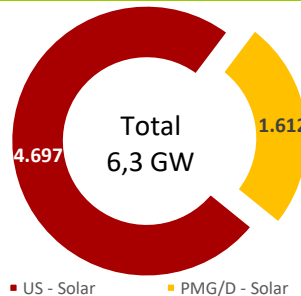
Summary Table – Project Status

Technology MW	Commissioning Stage [2]	Under Construction	Environmental Approved [5]	Environmental Undergoing [6]
Solar	1.945	4.870	48	215
Wind	313	839	0	473
Run of river	23	380	0	0
Geothermal	33	0	0	0
Biomass	166	3	0	0
Bess	0	60	0	0
Gas	0	0	0	0
Diesel	3	91	0	9
Total	2.483	6.244	48	696

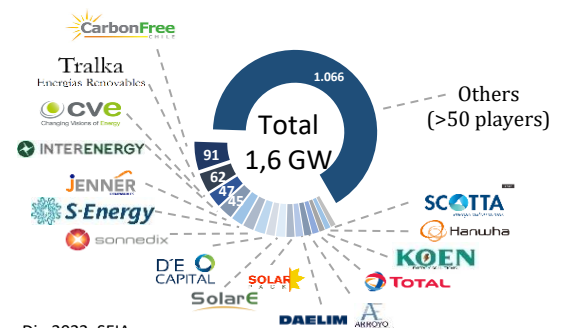
PMGD Installed Capacity by Distributor [7]



Solar Installed Capacity [2]



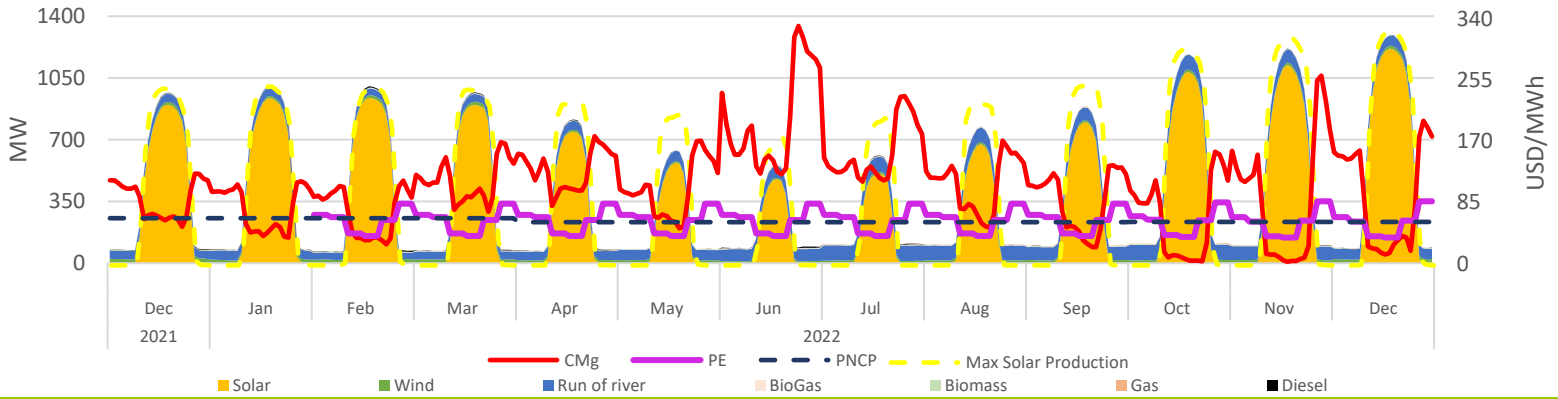
Solar PMG/D Operating Projects Market Share [7]



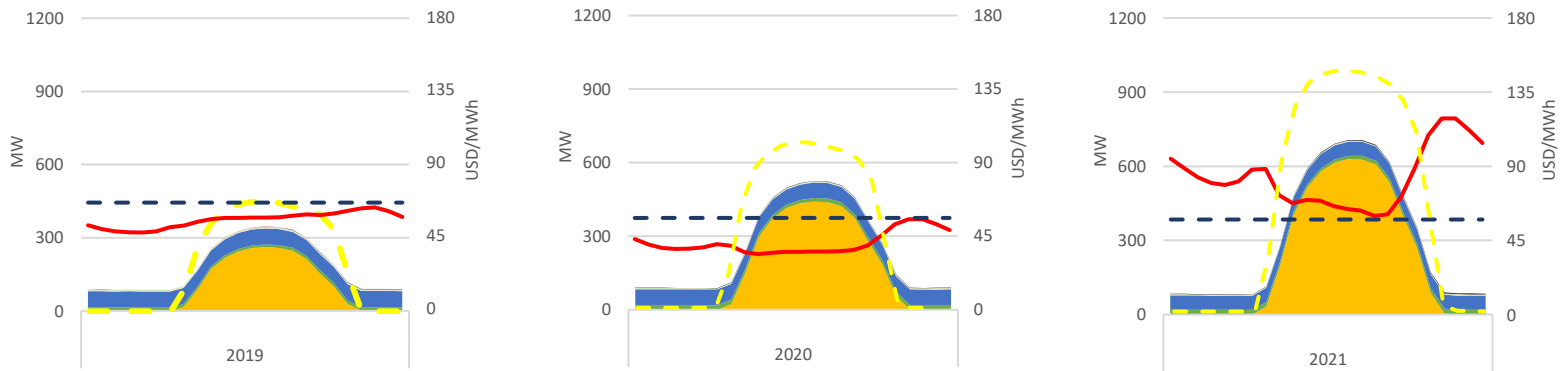
¹ NCRE: Non Conventional Renewable Energy.
² Installed Capacity, CNE Dic 2022.
³ SEN's operation reports, CEN Dic 2022.
⁴ Projects under construction, CNE Dic 2022.

⁵ Projects approved during Dic-2022, SEIA.
⁶ Projects Currently being Evaluated, Dic-2022, SEIA.
⁷ Based on public information.

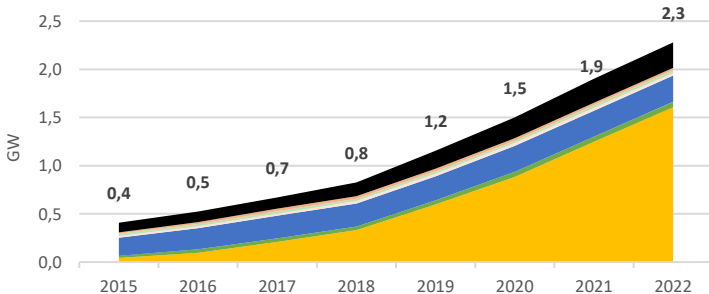
PMG/D Daily Hourly Average Production and Alto Jahuel's Prices



PMG/D Daily Hourly Average Production and Alto Jahuel's Prices

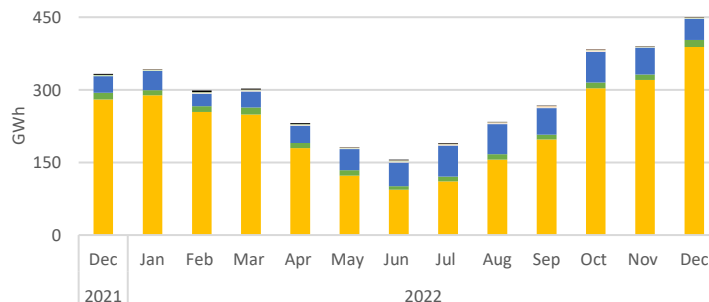


Installed Capacity by Technology



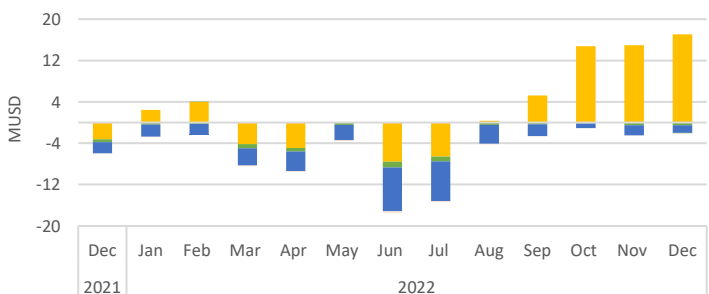
Technology MW	Dec-21	Nov-22	Dec-22	Dec-22 - Nov-22 Var. %
Solar	1.249	1.538	1.612	5%
Wind	53	53	53	0%
Run of river	270	274	274	0%
Biomass	29	29	29	0%
BioGas	28	28	28	0%
Gas	25	25	25	0%
Diesel	251	262	262	0%
Total	1.904	2.203	2.283	4%

Generation by Technology



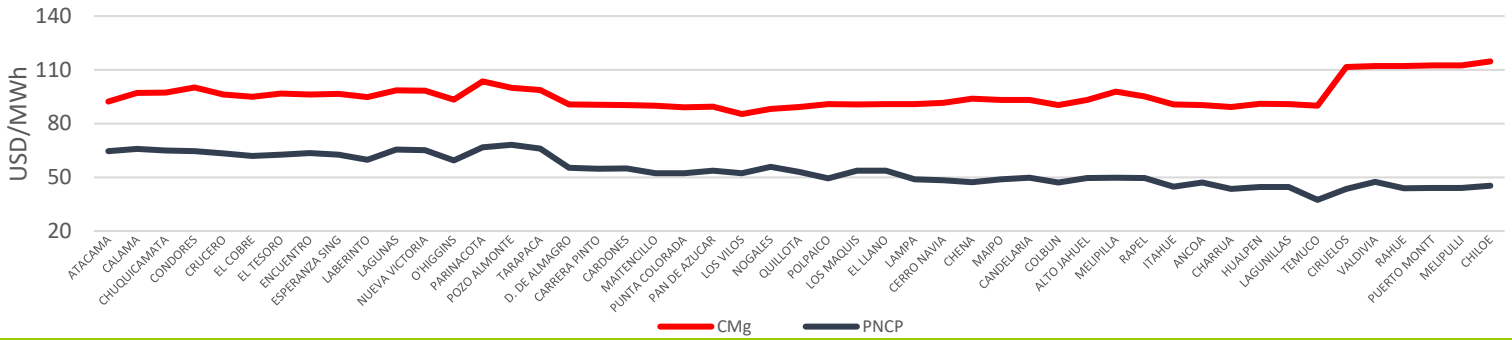
Technology GWh	Dec-21	Nov-22	Dec-22	Dec-22 - Nov-22 Var. %
Solar	290	376	406	8%
Wind	14	11	14	31%
Run of river	62	94	80	-15%
Biomass	7	6	8	27%
BioGas	0	1	1	-14%
Gas	1	1	1	-47%
Diesel	2	1	1	0%
Total	378	490	510	4%

Stabilized Price Mechanism Cost

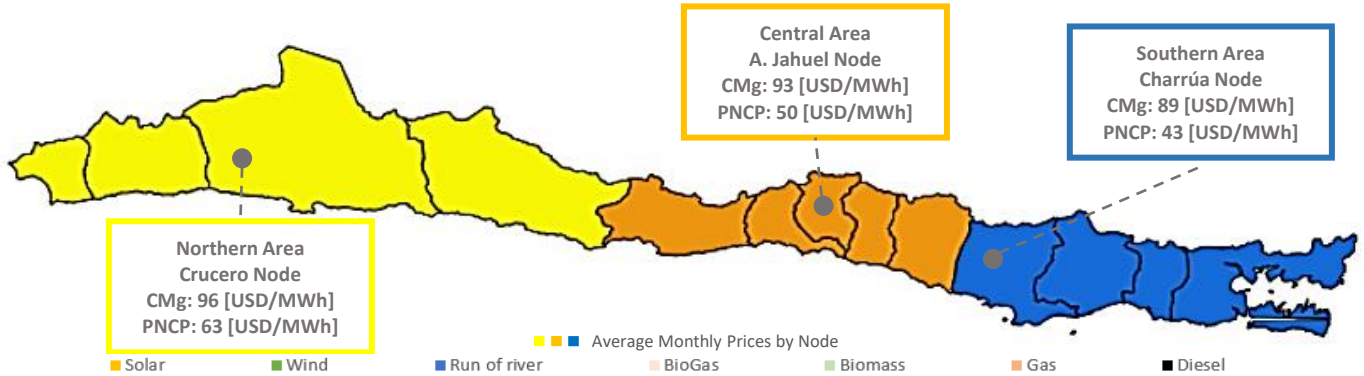


Technology kUSD	Dec-21	Nov-22	Dec-22	Dec-22 - Nov-22 Var. %
Solar	-3.230	14.937	17.035	14%
Wind	-564	-544	-548	-1%
Run of river	-2.152	-1.984	-1.470	26%
Biomass	0	0	0	0%
BioGas	-79	-8	-6	27%
Gas	0	0	0	0%
Diesel	0	0	0	0%
Total	-6.025	12.402	14.979	0%

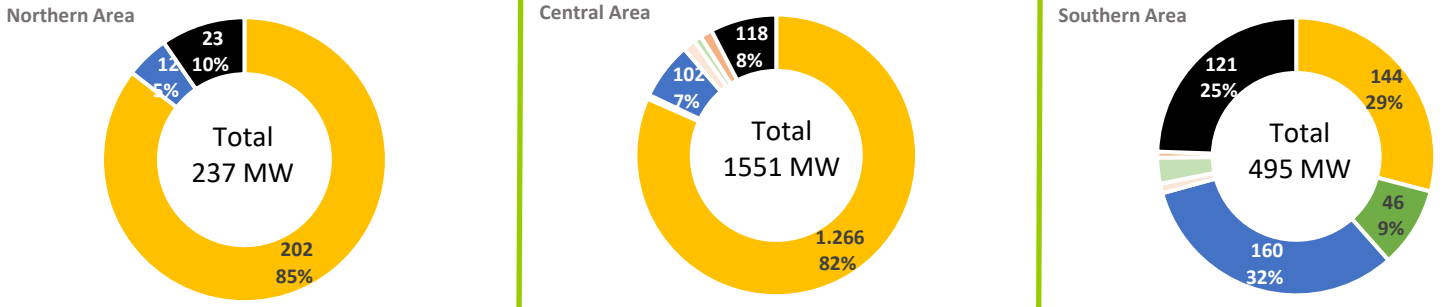
Average Monthly Prices by Node



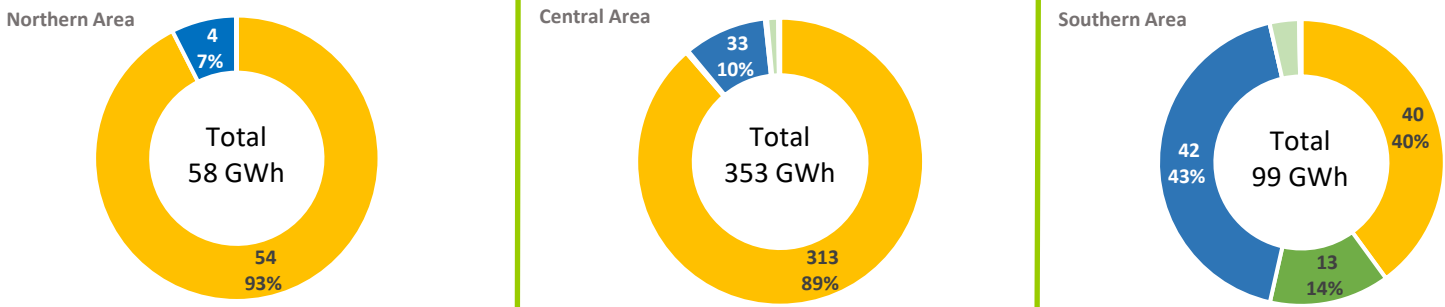
SEN's December - 2022 Average Prices by Node and Geographic Area



PMG/D Installed Capacity by Geographic Area



PMG/D Generation by Geographic Area



PMG/D Stabilized Price Mechanism Cost by Geographic Area

